

Catalog Antibodies

- 1 THE™ Elite Antibodies
- 2 Loading Control Antibodies
- 3 Epitope Tag Antibodies
- 4 Phospho-Specific Antibodies
- 5 MiniFresh® Antibodies
- 6 Other Antibodies
- 7 Related Products



All Correspondence

GenScript USA Inc.
860 Centennial Ave.
Piscataway, NJ 08854
USA

Accounts Payable/Receivable

Accounting Department
GenScript Corp.
860 Centennial Ave.
Piscataway, NJ 08854
USA

Tel (Toll-Free): 1-877-436-7274

Tel: 1-732-885-9188, 1-732-885-9688

Fax: 1-732-210-0262, 1-732-885-5878

Web: www.genscript.com

Secure Web Server: https://www.genscript.com/ssl-bin/secure_data

Email:

For Sales: order@genscript.com

For General Inquiry: info@genscript.com

For Molecular Biology: gene@genscript.com

For siRNA: sirna@genscript.com

For Peptides: peptide@genscript.com

For Proteins: protein@genscript.com

For Antibodies: antibody@genscript.com

For Chemicals: chemical@genscript.com

For Informatics Support: support@genscript.com

For Technical Support: support@genscript.com



Your Innovation Partner in Drug Discovery!

Catalog Antibodies

Reliable, well-selected antibodies are one of the most effective tools available to researchers when it comes to identifying and locating specific proteins. Increasingly, antibodies have been employed to directly diagnose and treat diseases. GenScript is proud to provide a comprehensive catalog of antibodies applicable to all areas of biological research and drug discovery. We have already supplied antibodies to customers around the world, including several of the top ten companies in the pharmaceutical industry. Our popular antibody brands such as THE™ Elite Antibodies and MiniFresh® Antibodies are designed to fit into our customers' existing research practices, removing waste and stress from the research process.

GenScript's comprehensive catalog of antibodies includes the following highlights:

- **Epitope Tag Antibodies:** Over 30 epitope tag antibodies are provided.
- **Phospho-Specific Antibodies:** We offer phospho-specific antibodies for thirteen signaling pathways.
- **THE™ Elite Antibodies:** The most effective and sensitive antibodies for your most demanding applications.
- **Loading Control Antibodies:** Polyclonal and monoclonal loading control antibodies against GAPDH, α -tubulin, α -actin, β -actin for several species
- **MiniFresh® Antibodies:** We provide small-package antibodies to keep your options open and your supplies fresh. Most of the antibodies are sold for only \$50 to reduce your research costs.

(http://www.genscript.com/cgi-bin/products/antibody_list_price_below_70.cgi)

If you cannot find your antibody on our list, try our **Express Antibody™ Service**, and receive any polyclonal antibody in only 5-8 weeks.



>> Quick Reference Guide

THE™ Elite Antibodies P1

Loading Control Antibodies P2

Epitope Tag Antibodies P3

Phospho-Specific Antibodies P6

MiniFresh® Antibodies P7

Other Antibodies P8

Protein Purification Resins and MagBeads P9

Protein Markers P11

THE™ Elite Antibodies

>> Description:

GenScript is proud to present THE™ Elite Antibody series, the most precise and effective antibodies that meet requirements of even the most challenging research.

THE™ stands for THE unmistakable, THE irreplaceable, and THE best quality. To produce THE™ Elite Antibodies, the most productive and stable hybridoma cell clones were selected. THE™ Elite Antibodies are then isolated from the cell line that shows the highest specificity against the corresponding antigen.

Do you worry about small samples, partially exposed tags, fusion-protein denaturation, or any other obstacles? Order GenScript's THE™ Elite Antibodies, and you are on the way to solve your problems.

GenScript plans to keep expanding THE™ Elite Antibody series. So visit our website often.

>> Key Featrues:

- **Ultra Specificity:** No cross-reactivity
- **Ultra Affinity:** Ultra-low dissociation constant
- **Ultra Reactivity:** Recognizes and binds even partially exposed terminal and internal tags
- **Ultra Clear Background:** Zero background
- **Ultra Convenience:** No secondary antibody needed for conjugated antibodies
- **Ultra Stability:** Stable in lyophilized form for at least two year

>> Product Overview:

THE™ Elite Antibody series now covers two major categories: epitope tag antibodies and loading controls. For each type, we provide both unconjugated and conjugated forms.

Please check the webpage (http://www.genscript.com/THE_antibody.html) for detailed information.

Cat. No.	Product Name	Applications	Size	Price
A00186	THE™ Anti-His mAb	ELISA, WB, IP, IF, FACS	100 µg	\$374.50
A00612	THE™ Anti-His [HRP] mAb	ELISA, WB	100 µg	\$410.20
A00613	THE™ Anti-His [Biotin] mAb	ELISA, WB	100 µg	\$410.20
A00704	THE™ Anti-c-Myc mAb	ELISA, WB, IP, IF	40 µg	\$69.00
			200 µg	\$311.00
A00863	THE™ Anti-c-Myc [HRP] mAb	ELISA, WB, IP, IF	40 µg	\$74.00
			200 µg	\$333.00
A00864	THE™ Anti-c-Myc [Biotin] mAb	ELISA, WB, IP, IF	40 µg	\$74.00
			200 µg	\$333.00
A00865	THE™ Anti-GST mAb	ELISA, WB, IP	40 µg	\$69.00
			200 µg	\$311.00
A00866	THE™ Anti-GST [HRP] mAb	ELISA, WB, IP	40 µg	\$74.00
			200 µg	\$333.00
A00867	THE™ Anti-GST [Biotin] mAb	ELISA, WB, IP	40 µg	\$74.00
			200 µg	\$333.00
A00702	THE™ Anti-β-Actin mAb	ELISA, WB	40 µg	\$69.00
			200 µg	\$311.00
A00730	THE™ Anti-β-Actin [HRP] mAb	ELISA, WB	40 µg	\$74.00
			200 µg	\$333.00

Loading Control Antibodies

>> Description:

Loading controls are used in Western blots for two main purposes: 1) To estimate relative amounts of total protein loaded in each lane. (This information is needed to determine if the difference in levels of the protein of interest in different samples is due to loading and transfer errors or to real changes in protein expression.) 2) To troubleshoot the Western blotting procedure. The proteins that are usually used as loading controls are known to be constitutively and stably expressed at high levels in almost all tissues and cells. They include housekeeping proteins, such as GAPDH, tubulin, and actin. GenScript is proud to provide a wide selection of polyclonal and monoclonal loading control antibodies for GAPDH, α-tubulin, α-actin, β-actin for several species. HRP- and biotin-conjugated versions of these antibodies are also available.

To simplify the loading control detection process, GenScript offers a series of One-Step Western™ Multiplex Kits (http://www.genscript.com/western_multiplex_kit.html). These kits allow simultaneous detection of both the protein of interest and the loading control in a simple one-hour procedure.

>> Product Overview:

Cat. No.	Product Name	Applications	Size	Price
A00191	Goat Anti-GAPDH pAb	ELISA, WB	40 µg	\$50.00
			200 µg	\$225.00
A00192	Goat Anti-GAPDH [HRP] pAb	WB	40 µg	\$60.00
			200 µg	\$270.00
A00915	Goat Anti-GAPDH [Biotin] pAb	WB	40 µg	\$60.00
			200 µg	\$270.00
A00084	Mouse Anti GAPDH mAb	WB, IF	100 µg	\$259.00
A00885	Rabbit Anti-α-Actin-1 pAb	WB, IF	40 µg	\$50.00
			200 µg	\$225.00
A00702	THE™ Anti-β-Actin mAb	ELISA, WB	40 µg	\$69.00*
			200 µg	\$311.00*
A00730	THE™ Anti-β-Actin [HRP] mAb	ELISA, WB	40 µg	\$74.00*
			200 µg	\$333.00*
A00200	Mouse Anti α-Tubulin mAb	ELISA, WB	100 µg	\$225.00

>> Note:

* These products are in promotion line.

Please check the webpage (http://www.genscript.com/loading_control_antibody.html) for detailed information.

Epitope Tag Antibodies

>> Description:

An epitope is an antigenic determinant, a biological structure or sequence to which an antibody binds. Recombinant DNA technology allows us to construct fusion proteins that consist of a gene of interest and an epitope tag. These fusion proteins can be identified and purified by using epitope tag specific antibodies. The most commonly used epitope tags include 6xHistidine, Hemagglutinin, c-Myc, GST, and DYKDDDDK. GenScript offers highly specific antibodies to all of these epitope tags. All GenScript antibodies are carefully tested by many methods to ensure their specificity and efficient performance.

>> Products:

Cat. No.	Product	Applications	Size	Price
A00203	Goat Anti-HA-tag [Biotin] pAb	ELISA, WB	40 µg	\$55.00
A00203	Goat Anti-HA-tag [Biotin] pAb	ELISA, WB	200 µg	\$247.50
A00169	Goat Anti-HA-tag [HRP] pAb	ELISA, WB	40 µg	\$55.00
A00169	Goat Anti-HA-tag [HRP] pAb	ELISA, WB	200 µg	\$247.50
A00168	Goat Anti-HA-tag pAb	ELISA, WB	40 µg	\$50.00
A00168	Goat Anti-HA-tag pAb	ELISA, WB	200 µg	\$225.00
A00129	Goat Anti-Trx-tag pAb	ELISA, WB	40 µg	\$50.00
A00129	Goat Anti-Trx-tag pAb	ELISA, WB	200 µg	\$225.00
A00099	Goat Anti-V5-tag pAb	ELISA, WB	100 µg	\$125.00
A00185	Mouse Anti-cGFP-tag mAb	ELISA, WB	40 µg	\$50.00
A00185	Mouse Anti-cGFP-tag mAb	ELISA, WB	200 µg	\$225.00
A00013	Mouse Anti-DYKDDDDK-tag mAb	WB, IP, IHC	500 µg	\$220.00
A00013	Mouse Anti-DYKDDDDK-tag mAb	WB, IP, IHC	1 mg	\$410.00
A00886	Mouse Anti-GFP-tag [HRP] mAb	ELISA, WB	40 µg	\$55.00
A00886	Mouse Anti-GFP-tag [HRP] mAb	ELISA, WB	200 µg	\$247.50
A00189	Mouse Anti-HA-tag mAb	ELISA, WB	40 µg	\$50.00
A00189	Mouse Anti-HA-tag mAb	ELISA, WB	200 µg	\$225.00
A00087	Mouse Anti-HA-tag mAb	WB, IP, IHC	100 µg	\$170.00
A00190	Mouse Anti-MBP-tag mAb	ELISA, WB	40 µg	\$50.00
A00190	Mouse Anti-MBP-tag mAb	ELISA, WB	200 µg	\$225.00
A00180	Mouse Anti-Trx-tag mAb	ELISA, WB	40 µg	\$50.00
A00180	Mouse Anti-Trx-tag mAb	ELISA, WB	200 µg	\$225.00
A00641	Mouse Anti-V5-tag mAb	ELISA, WB, IHC	100 µg	\$120.00
A00628	Rabbit Anti-AU1-tag pAb	ELISA, WB	40 µg	\$50.00
A00628	Rabbit Anti-AU1-tag pAb	ELISA, WB	200 µg	\$225.00
A00674	Rabbit Anti-Avi-tag pAb	ELISA, WB	40 µg	\$50.00
A00674	Rabbit Anti-Avi-tag pAb	ELISA, WB	200 µg	\$225.00
A00638	Rabbit Anti-B-tag pAb	ELISA, WB	40 µg	\$50.00
A00638	Rabbit Anti-B-tag pAb	ELISA, WB	200 µg	\$225.00
A00635	Rabbit Anti-CBP-tag pAb	ELISA, WB	40 µg	\$50.00
A00635	Rabbit Anti-CBP-tag pAb	ELISA, WB	200 µg	\$225.00
A00204	Rabbit Anti-c-Myc-tag [Biotin] pAb	ELISA, WB	40 µg	\$55.00
A00204	Rabbit Anti-c-Myc-tag [Biotin] pAb	ELISA, WB	200 µg	\$247.50
A00173	Rabbit Anti-c-Myc-tag [HRP] pAb	ELISA, WB	40 µg	\$55.00
A00173	Rabbit Anti-c-Myc-tag [HRP] pAb	ELISA, WB	200 µg	\$247.50
A00172	Rabbit Anti-c-Myc-tag pAb	ELISA, WB	40 µg	\$50.00

Cat. No.	Product	Applications	Size	Price
A00172	Rabbit Anti-c-Myc-tag pAb	ELISA, WB	200 µg	\$225.00
A00676	Rabbit Anti-DDDDK-tag pAb	ELISA, WB	40 µg	\$50.00
A00676	Rabbit Anti-DDDDK-tag pAb	ELISA, WB	200 µg	\$225.00
A00170	Rabbit Anti-DYKDDDDK-tag pAb	ELISA, WB	40 µg	\$50.00
A00170	Rabbit Anti-DYKDDDDK-tag pAb	ELISA, WB	200 µg	\$225.00
A00876	Rabbit Anti-E2-tag [HRP] pAb	ELISA, WB	40 µg	\$55.00
A00876	Rabbit Anti-E2-tag [HRP] pAb	ELISA, WB	200 µg	\$247.50
A00630	Rabbit Anti-E2-tag pAb	ELISA, WB	40 µg	\$50.00
A00630	Rabbit Anti-E2-tag pAb	ELISA, WB	200 µg	\$225.00
A00874	Rabbit Anti-E-tag [HRP] pAb	ELISA, WB	40 µg	\$55.00
A00874	Rabbit Anti-E-tag [HRP] pAb	ELISA, WB	200 µg	\$247.50
A00631	Rabbit Anti-E-tag pAb	ELISA, WB	40 µg	\$50.00
A00631	Rabbit Anti-E-tag pAb	ELISA, WB	200 µg	\$225.00
A00202	Rabbit Anti-GST-tag [Biotin] pAb	ELISA, WB	40 µg	\$55.00
A00202	Rabbit Anti-GST-tag [Biotin] pAb	ELISA, WB	200 µg	\$247.50
A00130	Rabbit Anti-GST-tag [HRP] pAb	ELISA, WB	40 µg	\$55.00
A00130	Rabbit Anti-GST-tag [HRP] pAb	ELISA, WB	200 µg	\$247.50
A00097	Rabbit Anti-GST-tag pAb	ELISA, WB	40 µg	\$50.00
A00097	Rabbit Anti-GST-tag pAb	ELISA, WB	200 µg	\$225.00
A00636	Rabbit Anti-HAT-tag pAb	ELISA, WB	40 µg	\$50.00
A00636	Rabbit Anti-HAT-tag pAb	ELISA, WB	200 µg	\$225.00
A00174	Rabbit Anti-His-tag pAb	ELISA, WB	40 µg	\$50.00
A00174	Rabbit Anti-His-tag pAb	ELISA, WB	200 µg	\$225.00
A00624	Rabbit Anti-HSV-tag pAb	ELISA, WB	40 µg	\$50.00
A00624	Rabbit Anti-HSV-tag pAb	ELISA, WB	200 µg	\$225.00
A00873	Rabbit Anti-KT3 [HRP] pAb	ELISA, WB	40 µg	\$55.00
A00873	Rabbit Anti-KT3 [HRP] pAb	ELISA, WB	200 µg	\$247.50
A00632	Rabbit Anti-KT3-tag pAb	ELISA, WB	40 µg	\$50.00
A00632	Rabbit Anti-KT3-tag pAb	ELISA, WB	200 µg	\$225.00
A00681	Rabbit Anti-MAT-tag pAb	ELISA, WB	40 µg	\$50.00
A00681	Rabbit Anti-MAT-tag pAb	ELISA, WB	200 µg	\$225.00
A00637	Rabbit Anti-Protein C (HPC4)-tag pAb	ELISA, WB	40 µg	\$50.00
A00637	Rabbit Anti-Protein C (HPC4)-tag pAb	ELISA, WB	200 µg	\$225.00
A00682	Rabbit Anti-RFP-tag pAb	ELISA, WB	40 µg	\$50.00
A00682	Rabbit Anti-RFP-tag pAb	ELISA, WB	200 µg	\$225.00
A00679	Rabbit Anti-S1-tag pAb	ELISA, WB	40 µg	\$50.00
A00679	Rabbit Anti-S1-tag pAb	ELISA, WB	200 µg	\$225.00
A00684	Rabbit Anti-SNAP-tag pAb	ELISA, WB	40 µg	\$50.00
A00684	Rabbit Anti-SNAP-tag pAb	ELISA, WB	200 µg	\$225.00
A00725	Rabbit Anti-SRT-tag pAb	ELISA, WB	40 µg	\$50.00
A00725	Rabbit Anti-SRT-tag pAb	ELISA, WB	200 µg	\$225.00
A00625	Rabbit Anti-S-tag pAb	ELISA, WB	40 µg	\$50.00
A00625	Rabbit Anti-S-tag pAb	ELISA, WB	200 µg	\$225.00
A00626	Rabbit Anti-Strep-tag II pAb	ELISA, WB	40 µg	\$50.00
A00626	Rabbit Anti-Strep-tag II pAb	ELISA, WB	200 µg	\$225.00
A00640	Rabbit Anti-SUMO-tag pAb	ELISA, WB	500 µg	\$145.00
A00677	Rabbit Anti-Tag-100-tag pAb	ELISA, WB	40 µg	\$50.00
A00677	Rabbit Anti-Tag-100-tag pAb	ELISA, WB	200 µg	\$225.00
A00683	Rabbit Anti-TAP-tag pAb	ELISA, WB	40 µg	\$50.00

Epitope Tag Antibodies

>> Products:

Cat. No.	Product	Applications	Size	Price
A00683	Rabbit Anti-TAP-tag pAb	ELISA, WB	200 µg	\$225.00
A00680	Rabbit Anti-Universal-tag pAb	ELISA, WB	40 µg	\$50.00
A00680	Rabbit Anti-Universal-tag pAb	ELISA, WB	200 µg	\$225.00
A00877	Rabbit Anti-V5-tag [HRP] pAb	ELISA, WB	40 µg	\$55.00
A00877	Rabbit Anti-V5-tag [HRP] pAb	ELISA, WB	200 µg	\$247.50
A00623	Rabbit Anti-V5-tag pAb	ELISA, WB	40 µg	\$50.00
A00623	Rabbit Anti-V5-tag pAb	ELISA, WB	200 µg	\$225.00
A00872	Rabbit Anti-VSV-G-tag [HRP] pAb	ELISA, WB	40 µg	\$55.00
A00872	Rabbit Anti-VSV-G-tag [HRP] pAb	ELISA, WB	200 µg	\$247.50
A00199	Rabbit Anti-VSV-G-tag pAb	ELISA, WB	40 µg	\$50.00
A00199	Rabbit Anti-VSV-G-tag pAb	ELISA, WB	200 µg	\$225.00
A00864	THE™ Anti-c-Myc [Biotin] mAb	ELISA, WB, IP, IF	40 µg	\$74.00
A00864	THE™ Anti-c-Myc [Biotin] mAb	ELISA, WB, IP, IF	200 µg	\$333.00
A00863	THE™ Anti-c-Myc [HRP] mAb	ELISA, WB, IP, IF	40 µg	\$74.00
A00863	THE™ Anti-c-Myc [HRP] mAb	ELISA, WB, IP, IF	200 µg	\$333.00
A00704	THE™ Anti-c-Myc mAb	ELISA, WB, IP, IF	40 µg	\$69.00
A00704	THE™ Anti-c-Myc mAb	ELISA, WB, IP, IF	200 µg	\$311.00
A00866	THE™ Anti-GST [HRP] mAb	ELISA, WB, IP	40 µg	\$74.00
A00866	THE™ Anti-GST [HRP] mAb	ELISA, WB, IP	200 µg	\$333.00
A00865	THE™ Anti-GST mAb	ELISA, WB, IP	40 µg	\$69.00
A00865	THE™ Anti-GST mAb	ELISA, WB, IP	200 µg	\$311.00
A00867	THE™ Anti-GST [Biotin] mAb	ELISA, WB, IP	40 µg	\$74.00
A00867	THE™ Anti-GST [Biotin] mAb	ELISA, WB, IP	200 µg	\$333.00
A00186	THE™ Anti-His mAb	ELISA, WB, IP, IF, FACS	100 µg	\$374.50
A00613	THE™ Anti-His [Biotin] mAb	ELISA, WB	100 µg	\$410.20
A00612	THE™ Anti-His [HRP] mAb	ELISA, WB	100 µg	\$410.20

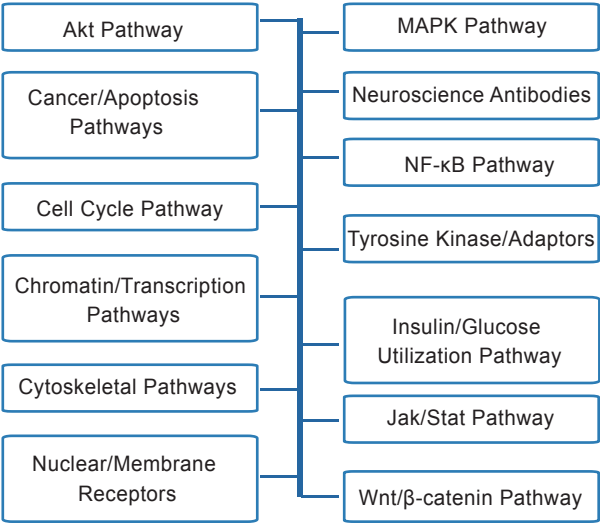
Phospho-Specific Antibodies

>> Description:

Protein phosphorylation-dephosphorylation is one of the major signaling mechanisms used to modulate the functional properties of proteins involved in gene expression, cell adhesion, cell proliferation, cell differentiation, and the cell cycle. The determination of the state of phosphorylation of specific proteins is very important in the studies of signaling pathways and protein functions. Phospho-specific antibodies, which can discriminate between the phosphorylated and non-phosphorylated forms of a given protein, enable easy qualitative and quantitative detection of phosphorylated proteins by Western blot, ELISA and immunohistochemical methods.

GenScript's phospho-specific antibodies are affinity-purified and tested for cross-reactivity with the non-phosphorylated forms of proteins. They recognize the phosphorylated amino acids in the context of the surrounding amino acid sequence. Using a combination of pan-antibody and phospho-specific antibody, a researcher can assess the degree of phosphorylation of any given protein.

GenScript provides full sets of phospho-specific/pan antibody pairs for several signaling pathways. These antibodies are suitable for most applications, including Western blot analysis, ELISA, and immunocytochemical assays.



>> Note:

Several antibodies will be included in more than one category. Please check the webpage (http://www.genscript.com/phospho_specific_antibody.html) for detailed information.

MiniFresh®
\\mi-nē 'fresh \\ noun.

GenScript's fresh antibodies that are in small packages to help you
reduce your research costs.

\$50

MiniFresh® Antibodies

MiniFresh® = \$50 antibodies

We provide small-package antibodies to keep your options open and your supplies fresh. Most of the antibodies are sold for only \$50 to reduce your research costs.

- Small, because the MiniFresh® helps you to reduce your research costs;
- Small, with big performance that helps you get quality results;
- Small, because we concern about your costs and it is from GenScript.

Please check the MiniFresh® webpage for the complete \$50 antibody list.
(http://www.genscript.com/cgi-bin/products/antibody_list_price_below_70.cgi)

Other Antibodies

Cat. No.	Product	Applications	Size	Price
A00806	Mouse Anti-APP mAb	ELISA, WB, IHC	40 µg	\$55.00
A00804	Mouse Anti-Calcyclin mAb	ELISA, WB, IHC	40 µg	\$55.00
A00829	Mouse Anti-CD31 mAb	ELISA, WB, IHC	40 µg	\$55.00
A00814	Mouse Anti-CK1 mAb	ELISA, WB, IHC	40 µg	\$55.00
A00819	Mouse Anti-Desmin mAb	ELISA, WB, IHC	40 µg	\$55.00
A00808	Mouse Anti-Dynamin-1 mAb	ELISA, WB, IHC	40 µg	\$55.00
A00817	Mouse Anti-GSTP1 mAb	ELISA, WB, IHC	40 µg	\$55.00
A00832	Mouse Anti-IGF1R mAb	ELISA, WB, IHC	40 µg	\$55.00
A00802	Mouse Anti-LSD1 mAb	ELISA, WB, IHC	40 µg	\$55.00
A00813	Mouse Anti-Lyn mAb	ELISA	40 µg	\$55.00
A00818	Mouse Anti-MAPK10 mAb	ELISA, WB, IHC	40 µg	\$55.00
A00799	Mouse Anti-MSH2 mAb	ELISA, WB, IHC	40 µg	\$55.00
A00820	Mouse Anti-Myoglobin mAb	ELISA, WB, IHC	40 µg	\$55.00
A00796	Mouse Anti-Rab25 mAb	ELISA, WB, IHC	40 µg	\$55.00
A00830	Mouse Anti-RSK1 mAb	ELISA, WB, IHC	40 µg	\$55.00
A00812	Mouse Anti-SNCG mAb	ELISA, WB, IHC	40 µg	\$55.00
A00809	Mouse Anti-SRA mAb	ELISA, WB, IHC	40 µg	\$55.00
A00824	Mouse Anti-Vimentin mAb	ELISA	40 µg	\$55.00
A00918	Rabbit Anti-Beta-1,3-GalTase 2 pAb	ELISA, WB	200 µg	\$225.00
A00971	Rabbit Anti-LC3A/Apg-8 pAb	WB	40 µg	\$50.00
A00971	Rabbit Anti-LC3A/Apg-8 pAb	WB	200 µg	\$225.00
A00933	Rabbit Anti-Niban pAb	WB	40 µg	\$50.00
A00933	Rabbit Anti-Niban pAb	WB	200 µg	\$225.00
A00961	Rabbit Anti-PGK1 pAb	ELISA, WB	40 µg	\$50.00
A00961	Rabbit Anti-PGK1 pAb	ELISA, WB	200 µg	\$225.00
A00706	Rabbit Anti-prohibitin pAb	WB	40 µg	\$50.00
A00706	Rabbit Anti-prohibitin pAb	WB	200 µg	\$225.00
A00744	Mouse Anti-Foxp3 mAb	WB, IHC	40 µg	\$55.00
A00740	Mouse Anti-Human CD10 mAb	ELISA, IHC	40 µg	\$55.00
A00741	Mouse Anti-Human CD14 mAb	ELISA, IHC	40 µg	\$55.00
A00742	Mouse Anti-Human CD19 mAb	ELISA, WB, IHC	40 µg	\$55.00
A00023	Mouse Anti-Human CD3 (ε chain) mAb	ELISA, WB	500 µg	\$220.00
A00023	Mouse Anti-Human CD3 (ε chain) mAb	ELISA, WB	1 mg	\$410.00
A00024	Mouse Anti-Human CD4 mAb	ELISA, WB	500 µg	\$220.00
A00024	Mouse Anti-Human CD4 mAb	ELISA, WB	1 mg	\$410.00
A00026	Mouse Anti-Human CD5 mAb	ELISA, WB	500 µg	\$220.00
A00026	Mouse Anti-Human CD5 mAb	ELISA, WB	1 mg	\$410.00
A00027	Mouse Anti-Human CD8 mAb	ELISA, WB	500 µg	\$220.00
A00027	Mouse Anti-Human CD8 mAb	ELISA, WB	1 mg	\$410.00
A00060	Rat Anti-Mouse B220 (B cell specific isoform of CD45) mAb	ELISA, WB	500 µg	\$220.00
A00060	Rat Anti-Mouse B220 (B cell specific isoform of CD45) mAb	ELISA, WB	1 mg	\$410.00
A00067	Rat Anti-Mouse B7-1 (CD80) mAb	ELISA, WB	500 µg	\$220.00
A00067	Rat Anti-Mouse B7-1 (CD80) mAb	ELISA, WB	1 mg	\$410.00
A00066	Rat Anti-Mouse CD11b [FITC] mAb	ELISA	500 µg	\$350.00
A00066	Rat Anti-Mouse CD11b [FITC] mAb	ELISA	1 mg	\$560.00
A00063	Rat Anti-Mouse CD3 mAb	ELISA, WB	500 µg	\$220.00
A00063	Rat Anti-Mouse CD3 mAb	ELISA, WB	1 mg	\$410.00
A00064	Rat Anti-Mouse CD4 mAb	ELISA, WB	500 µg	\$220.00
A00064	Rat Anti-Mouse CD4 mAb	ELISA, WB	1 mg	\$410.00
A00068	Rat Anti-Mouse Thy-1 (CD90) mAb	ELISA, WB	500 µg	\$220.00

Protein Purification Resins and MagBeads

>> Description:

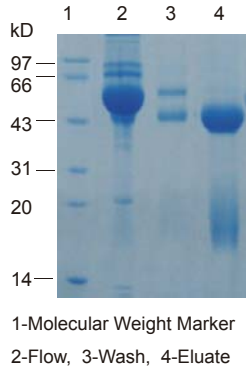
GenScript provides a series of protein purification resins and MagBeads that allow efficient and reliable purification of target proteins and antibodies from biological samples including cell lysates and culture supernatants. These resins and beads are covalently cross-linked to or coated with proteins A, G, or L, antibodies, Ni²⁺, iminobiotin or glutathione. Resin- or MagBead-based purification methods significantly lower the possibility of cross-contamination and loss of proteins that are common if centrifugation or gravity precipitation methods are used. Purification using resins and beads is also less labor-intensive and time-consuming.

>> Key Featrues:

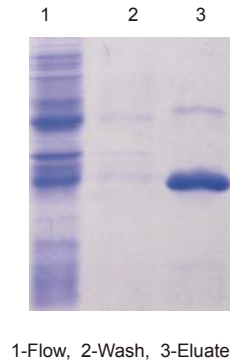
- Quick and Convenient Separation
- Minimal Loss of Target Protein
- Minimal Cross-Contamination
- High Binding Capacity

>> Examples:

1. SDS-PAGE analysis of a protein purified using Protein A Resin from GenScript (L00210)



2. SDS-PAGE analysis of a protein purified using High-Affinity GST resin from GenScript (L00206)



>> Product List:

Cat. No.	Product Name	Size	Price
L00206	GST Resin	1 Kit	\$ 98.00
L00210	Protein A Resin	5 ml	\$ 98.00
L00209	Protein G Resin	5 ml	\$ 129.00
L00239	Protein L Resin	2.5 ml	\$ 145.00
L00223	Ni-IDA Resin	10 ml	\$ 80.00
		25 ml	\$168.00
		500 ml	\$ 2,480.00
L00272	IminoBiotin Resin	5 ml	\$ 118.00
L00275	THE™ Anti-His mAb MagBeads	5 mg	\$197.00
L00295	Ni-Charged Magnetic Beads	2 ml	\$98.00
L00273	Protein A MagBeads	1 ml	\$89.00
L00274	Protein G MagBeads	0.5 ml	\$125.00
L00277	Protein A/G MagBeads	0.5 ml	\$148.00
L00328	Goat Anti-Rabbit IgG Magbeads	1 ml	\$159.00
L00332	Donkey Anti-Goat IgG MagBeads	1 ml	\$159.00
L00336	Mouse Anti-GST mAb MagBeads	1 ml	\$159.00
L00337	Mouse Anti-Trx mAb MagBeads	1 ml	\$159.00
MM00112	2-Tube Magnetic Separation Racks	1 EA	\$29.00
MM00113	12-Tube Magnetic Separation Racks	1 EA	\$79.00

Protein Markers

>> Description:

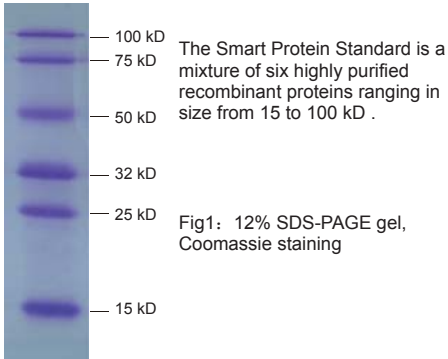
Protein molecular weight markers are used to estimate sample molecular weights, to monitor the progress of an electrophoretic run, and as a positive control for the electrophoresis and Western conditions. GenScript offers a wide selection of molecular weight markers for protein electrophoresis and Western blot applications, including unstained, prestained, peptide, Western-viewable, and other markers. All have been quality-controlled to assure consistent performance and are available in convenient package sizes.

>> Key Features:

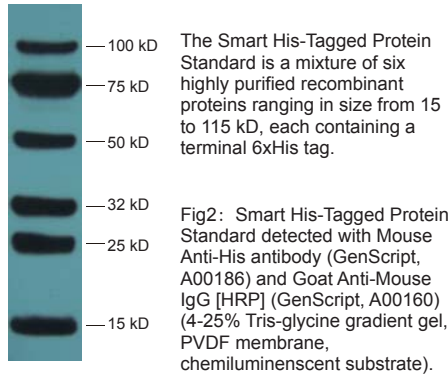
- Comprehensive selection** — GenScript offers a variety of protein markers for different applications, including SDS-PAGE, Western blot, etc.
- Direct visualizaiton** — GenScript's EasyWestern Protein Marker allows direct visualization of the MW standard on Western blots (membrane, X-ray film, chemiluminescent imager).
- Broad molecular weight range** — GenScript provides low-molecular weight, mid-range and high molecular weight markers to suit all practical needs.

>> Examples:

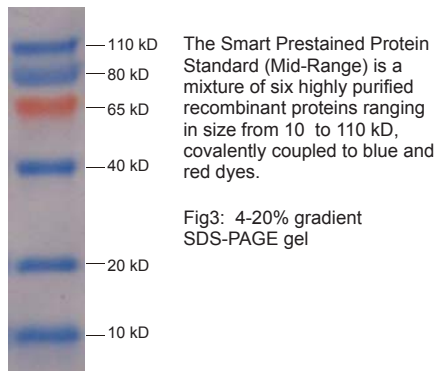
1. Smart Protein Standard (Mid-Range)



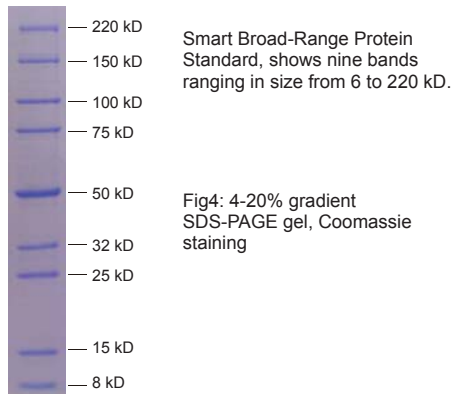
2. Smart His-Tagged Protein Standard



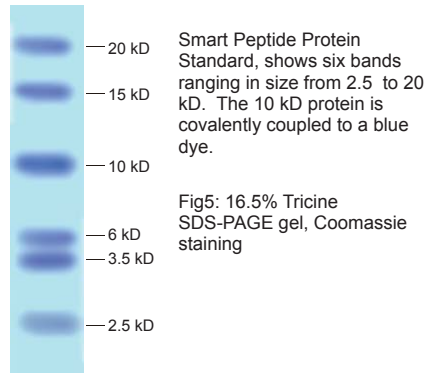
3. Smart Prestained Protein Standard (Mid-Range)



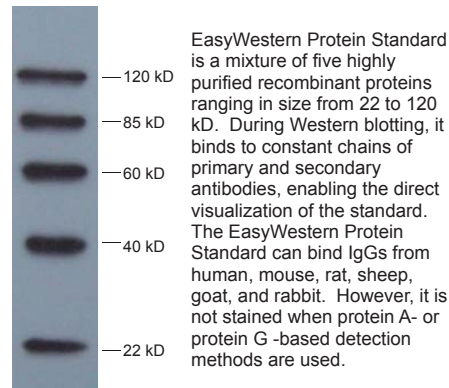
4. Smart Broad-Range Protein Standard



5. Smart Peptide Protein Standard



6. EasyWestern Protein Standard



>> Product List:

Cat. No.	Product Name	Size	Price
MM0900	Smart Protein Standard (Middle-Range)	100 Lanes	\$49.00
MM0904	Smart His-tagged Protein Standard	100 Lanes	\$98.00
MM0905	Smart Prestained Protein Standard (Middle-Range)	100 Lanes	\$95.00
MM0906	Smart Broad-Range Protein Standard	100 Lanes	\$58.00
MM0907	Smart Peptide Protein Standard	50 Lanes	\$58.00
MM0908	EasyWestern Protein Standard	100 Lanes	\$68.00