



**All Correspondence**  
GenScript USA Inc.  
120 Centennial Ave.  
Piscataway, NJ 08854  
US

**Accounts Payable/Receivable**  
Accounting Department  
GenScript USA Inc.  
120 Centennial Ave.  
Piscataway, NJ 08854  
US

**Tel (Toll-Free):** 1-877-436-7274  
**Tel:** 1-732-885-9188, 1-732-885-9688  
**Fax:** 1-732-210-0262, 1-732-885-5878  
**Web:** [www.genscript.com](http://www.genscript.com)  
**Secure Web Server:** [https://www.genscript.com/ssl-bin/secure\\_data](https://www.genscript.com/ssl-bin/secure_data)

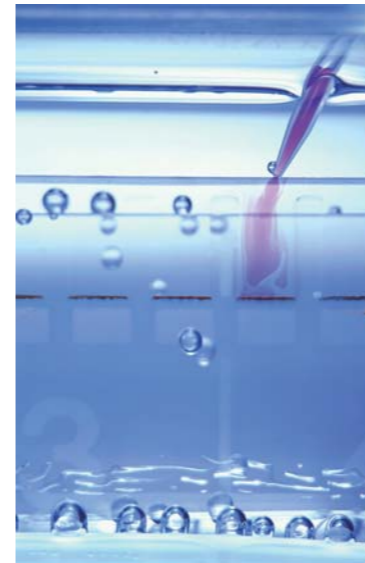
**France**  
**Tel:** 08-05-10-22-28 (Toll-Free)  
**Address:** GenScript USA Inc., 2 Rue de Fontarabie  
75020 Paris, France

**Japan**  
**Tel:** 81-34-580-1682  
**Address:** GenScript USA Inc., 801, 5-7-18 nishinakajima  
yodogawaku, Osaka, 532-0011, Japan

**Email:**  
For Sales: [order@genscript.com](mailto:order@genscript.com)  
For General Inquiry: [info@genscript.com](mailto:info@genscript.com)  
For Molecular Biology: [gene@genscript.com](mailto:gene@genscript.com)  
For siRNA: [sirna@genscript.com](mailto:sirna@genscript.com)  
For Peptides: [peptide@genscript.com](mailto:peptide@genscript.com)  
For Proteins: [protein@genscript.com](mailto:protein@genscript.com)  
For Antibodies: [antibody@genscript.com](mailto:antibody@genscript.com)  
For Chemicals: [chemical@genscript.com](mailto:chemical@genscript.com)  
For Informatics Support: [support@genscript.com](mailto:support@genscript.com)  
For Technical Support: [support@genscript.com](mailto:support@genscript.com)

## ONE-HOUR Western™

- 1 ONE-HOUR Western™ Technology
- 2 ONE-HOUR IP-Western Technology
- 3 ONE-HOUR Western™ Fluorescent Kit



## 2G ONE-HOUR Western™ Kits Upgraded technology to cut your costs



**2G (2<sup>nd</sup> generation) ONE-HOUR Western™ Kits**

GenScript's upgraded technology to generate its high quality 2G ONE-HOUR Western™ Kits, which can give you high-quality results with the similar cost as classical Western blot.



*Your Innovation Partner in Drug Discovery!*

## ONE-HOUR Western™ & IP-Western Technology

Suffering from the tedious classical Western procedure? Struggling with cross-contamination in your IP-Western?

You can wave goodbye to all these nightmares! GenScript is proud to offer a one-package solution to all your Western and IP-Western problems with our proprietary ONE-HOUR Western™ technology. Our ONE-HOUR Western™ and ONE-HOUR IP-Western kits will not only reduce the time required for the Western procedure to about one hour but will also guarantee low background. Our ONE-HOUR IP-Western kits will completely eliminate contamination from heavy/light chains and Proteins A and G.

Can't wait any longer? Let's move on to select the kit best suited to your needs!

| ONE-HOUR Series   | Key features  | Total time |
|---|---|------------|
| ONE-HOUR Western™ Complete Kits                         | <ol style="list-style-type: none"> <li>1. Recommended for regular users</li> <li>2. Convenient package with all reagents included</li> <li>3. Fast and easy to perform</li> <li>4. High sensitivity and low background</li> </ol> | 1 hour     |
| ONE-HOUR Western™ Advanced Kits                         | <ol style="list-style-type: none"> <li>1. Recommended for detection of low amounts of protein</li> <li>2. Higher sensitivity and lower background</li> </ol>  | 1.25 hours |
| ONE-HOUR Western™ Multiplex Kits                        | <ol style="list-style-type: none"> <li>1. Built-in loading controls</li> <li>2. One step for your target and loading controls</li> <li>3. Saving reagents and time</li> </ol>   | 1.25 hours |
| ONE-HOUR IP-Western Kits                                | <ol style="list-style-type: none"> <li>1. For immunoprecipitated proteins</li> <li>2. Low background</li> <li>3. Journal-quality images</li> </ol>  | 1 hour     |
| ONE-HOUR Western™ Fluorescent Kit <b>NEW!</b>           | <ol style="list-style-type: none"> <li>1. No dark room, developer or X-Ray film is needed</li> <li>2. More sensitive than traditional chemiluminescence methods</li> </ol>  | 1.25 hours |
| ONE-HOUR Western™ Multiplex Fluorescent Kit <b>NEW!</b> | <ol style="list-style-type: none"> <li>1. Simultaneous detection of multiple targets on a single blot</li> <li>2. Saving time associated with optimizing fluorescent Western blots</li> </ol>                                     | 1.25 hours |

## >> Quick Reference Guide

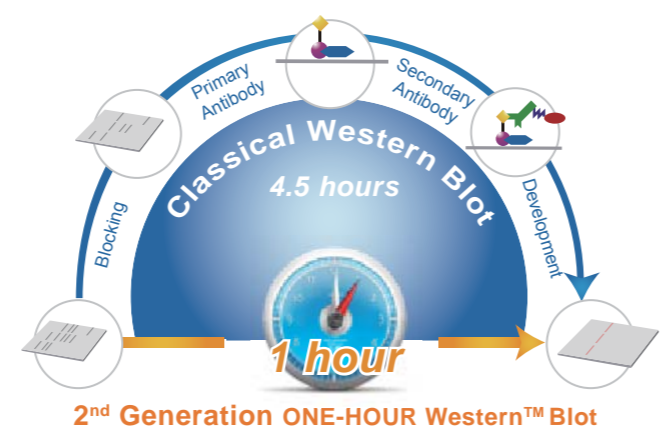
|   |     |
|---|-----|
| 2 <sup>nd</sup> Generation ONE-HOUR Western™ Technology | P1  |
| ONE-HOUR Western™ Complete Kits                         | P2  |
| ONE-HOUR Western™ Advanced Kits                         | P3  |
| ONE-HOUR Western™ Basic Kits                            | P4  |
| ONE-HOUR Western™ Multiplex Kits                        | P5  |
| ONE-HOUR IP-Western Kits                                | P6  |
| ONE-HOUR Western™ Fluorescent Kit                       | P8  |
| ONE-HOUR Western™ Multiplex Fluorescent Kit             | P9  |
| Accessories   | P10 |

## 2<sup>nd</sup> Generation ONE-HOUR Western™ Technology

### >> Description:

GenScript's second generation ONE-HOUR Western™ Kits are designed to replace the classical Western blotting. They are suitable for all Western applications in biotechnological and pharmaceutical laboratories and academic institutions. Compared with the classical Western blot, ONE-HOUR Western™ kits reduce the procedure time from 4.5 hours to only ONE hour.

**2<sup>nd</sup> Generation ONE-HOUR Western™ Kits are even more cost efficient, comparable to the costs of traditional Western.**



### >> Competitive Advantages:

- 1. Easy Performance:** ONE-HOUR Western™ technology streamlines classical Western blot analysis by bypassing the steps of secondary antibody binding and washing between primary and secondary antibodies.
- 2. Short Procedure:** ONE-HOUR Western™ technology shortens Western blot analysis down to only one hour from classical 4.5-hour procedure.
- 3. Reduced Background:** In the ONE-HOUR Western™ Complete Kits, all reagents, buffers, membranes and substrates are optimized to minimize any potential background.
- 4. No Secondary Antibody Needed:** ONE-HOUR Western™ kits include the proprietary secondary antibody, leaving out need for an additional secondary antibody.

### >> Cost comparison between ONE-HOUR Western™ & traditional Western (for one blot):

| Kit Components            | Traditional Western | GenScript ONE-HOUR Western™ |
|---------------------------|---------------------|-----------------------------|
| Membrane (1 sheet)        | \$7.96              | All in One Package          |
| Substrate (6 ml)          | \$6.62              |                             |
| Blocking Solution (20 ml) | \$4.86              |                             |
| Washing Buffer (125 ml)   | \$1.79              |                             |
| X-Ray Film (2 sheets)     | \$1.4               |                             |
| Secondary Antibody        | \$1.5               |                             |
| Total Time per Test       | 4.5 hours           | 1 hour, Priceless           |
| Total Cost per Test       | \$24.13             | \$19.50                     |

## ONE-HOUR Western™ Complete Kits *Upgraded!*

### >> Products:

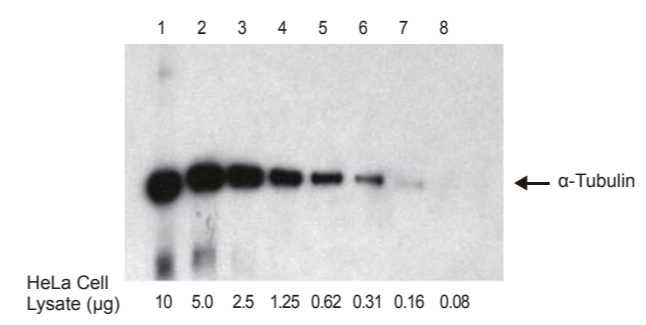
| Cat. No. | Product   | Size                                    | Price                |
|----------|---|---|----------------------|
| L00204T  | ONE-HOUR Western™ Complete Kit using TMB (Rabbit) | 1 Kit (10 Assays)                       | \$255.00             |
| L00205T  | ONE-HOUR Western™ Complete Kit using TMB (Mouse)  | 1 Kit (10 Assays)                       | \$255.00             |
| L00228T  | ONE-HOUR Western™ Complete Kit using TMB (Goat)   | 1 Kit (10 Assays)                       | \$255.00             |
| L00204C  | ONE-HOUR Western™ Complete Kit (Rabbit)           | 1 Kit (10 Assays)<br>5 Kits (50 Assays) | \$275.00<br>\$962.50 |
| L00205C  | ONE-HOUR Western™ Complete Kit (Mouse)            | 1 Kit (10 Assays)<br>5 Kits (50 Assays) | \$275.00<br>\$962.50 |
| L00228   | ONE-HOUR Western™ Complete Kit (Goat)             | 1 Kit (10 Assays)<br>5 Kits (50 Assays) | \$275.00<br>\$962.50 |

ONE-HOUR Western™ Complete Kits, based on GenScript's ONE-HOUR Western™ technology, are complete packages that contain all the necessary reagents, buffers, nitrocellulose membrane and substrates for performing a Western or Dot blot analysis. All the components in ONE-HOUR Western™ Complete Kits have been optimized for best results.

### >> Key Features:

- **Fast:** Finish whole procedure within one hour.
- **Easy:** Fewer steps mean fewer chances of human error.
- **Simple:** Need far less optimization, NO special labeling required for primary antibody, Secondary antibodies are included in the kits.
- **Flexible:** Available for use with rabbit, mouse, rat, chicken, goat, and sheep primary antibody.
- **Credible:** Highly reproducible experiment results.
- **Sensitive:** Comparable to or even better than that of classical 4.5-hour procedure, depending on the quality and amount of antibody used.
- **Convenient:** Complete package with all pre-optimized components included.
- **Compatible:** Compatible with both chemiluminescent and chromogenic substrates.

### >> Example:



Western blot detection of  $\alpha$ -Tubulin using the ONE-HOUR Western™ Kit (L00204) and polyclonal  $\alpha$ -Tubulin antibody (abcam, ab4074) from HeLa cell lysates (BD Biosciences, #611449).

## ONE-HOUR Western™ Advanced Kits

### >> Products:

| Cat. No. | Product                                 | Size              | Price    |
|----------|---|-------------------|----------|
| L00241   | ONE-HOUR Western™ Advanced Kit (Rabbit) | 1 Kit (10 Assays) | \$345.00 |
| L00242   | ONE-HOUR Western™ Advanced Kit (Mouse)  | 1 Kit (10 Assays) | \$345.00 |
| L00243   | ONE-HOUR Western™ Advanced Kit (Goat)   | 1 Kit (10 Assays) | \$345.00 |

The ONE-HOUR Western™ Advanced Kit is designed to use much less primary antibody, but to result in high sensitivity and low background as compared to traditional Western blot analysis. GenScript's ONE-HOUR Western™ Advanced kits reveal even the tiniest amounts of relevant protein. Do not let an inferior Western result overlook small but significant results. Like our standard ONE-HOUR Western™, the ONE-HOUR Western™ Advanced kit cuts Western and Dot blot time significantly. However, the ONE-HOUR Western™ Advanced kits boasts even greater sensitivity with much less antibody.

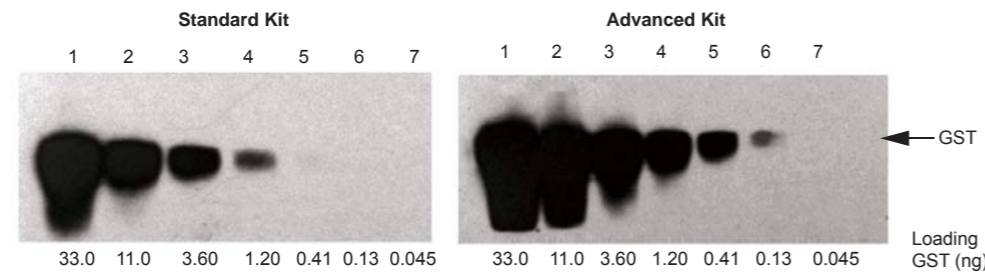
The ONE-HOUR Western™ Advanced Kits contain all the necessary reagents, buffers, nitrocellulose membrane, and HRP substrate for performing a Western blot.

### >> Key Features:

- **Easy to perform:** Reveal the tiniest amounts of relevant protein.
- **Less antibody:** Only 0.5-2 µg of antibody is needed.
- **High sensitivity:** Sensitivity is higher than that of standard ONE-HOUR Western™ Kits.

### >> Examples:

#### Comparison of the two ONE-HOUR Western™ Kits of different sensitivities using monoclonal antibodies.

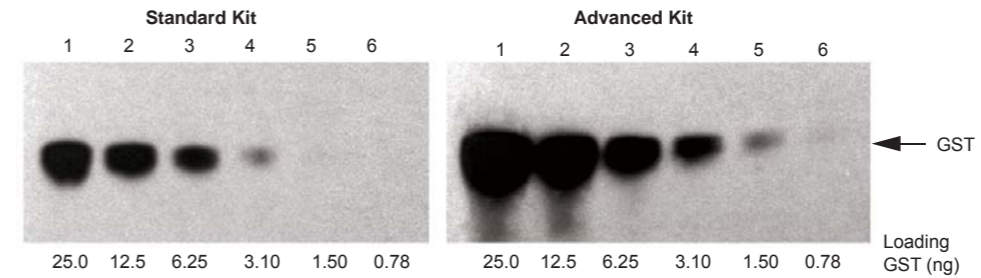


Western blots for the detection of GST protein by ONE-HOUR Western™ using different ONE-HOUR Western™ Kits: Standard (L00205C) and Advanced (L00242).

Primary antibody: Mouse Anti-GST mAb (GenScript, A00865).

33.0 11.0, 3.60, 1.20 0.41 0.13, and 0.045 ng of GST protein were loaded into Lanes 1, 2, 3, 4, 5, 6, and 7, respectively.

#### Comparison of the two ONE-HOUR Western™ Kits of different sensitivities using polyclonal antibodies.



Western blots for the detection of GST protein by ONE-HOUR Western™ using different ONE-HOUR Western™ Kits: Standard (L00204C) and Advanced (L00241).

Primary antibody: Rabbit Anti-GST pAb (GenScript, A00097).

25.0 12.5, 6.25, 3.10, 1.50, and 0.78 ng of GST protein were loaded into Lanes 1, 2, 3, 4, 5, and 6, respectively.

## ONE-HOUR Western™ Basic Kits

### >> Products:

| Cat. No. | Product                              | Size              | Price    |
|----------|--------------------------------------|-------------------|----------|
| L00204   | ONE-HOUR Western™ Basic Kit (Rabbit) | 1 Kit (10 Assays) | \$195.00 |
| L00205   | ONE-HOUR Western™ Basic Kit (Mouse)  | 1 Kit (10 Assays) | \$195.00 |
| L00399   | ONE-HOUR Western™ Basic Kit (Goat)   | 1 Kit (10 Assays) | \$195.00 |

ONE-HOUR Western™ Basic Kits are the simplified version of ONE-HOUR Western™ Complete Kits. The WestClear™ Nitrocellulose Membrane and LumiSensor™ Chemiluminescent HRP Substrate Kit are not included in the package. It is economical to choose these kits if you have surplus accessories in hand. Associated with GenScript's accessories, ONE-HOUR Western™ Basic Kits can perform as excellent as ONE-HOUR Western™ Complete Kits.

### >> Related Products:

#### WestClear™ Nitrocellulose Membrane

| Cat. No.   | Name                               | Size                         | Price   |
|------------|------------------------------------|------------------------------|---------|
| L00224A60  | WestClear™ Nitrocellulose Membrane | 1 pk (10 sheets of 7.5×8 cm) | \$60.50 |
| L00224A225 | WestClear™ Nitrocellulose Membrane | 1 pk (5 sheets of 15×15 cm)  | \$75.90 |

#### ONE-HOUR Western™ Detection Substrates

| Cat. No.   | Name  | Size            | Price   |
|------------|---|-----------------|---------|
| L00225     | LumiSensor™ Plus Chemiluminescent HRP Substrate Kit | 1 Kit (2×30 ml) | \$89.00 |
| L00221V60  | LumiSensor™ Chemiluminescent HRP Substrate Kit      | 1 Kit (2×30 ml) | \$55.00 |
| L00222V60  | ChromoSensor™ One-Solution TMB Substrate            | 1 pk (60 ml)    | \$28.00 |
| L00222V125 | ChromoSensor™ One-Solution TMB Substrate            | 1 pk (125 ml)   | \$39.00 |

## ONE-HOUR Western™ Multiplex Kits

### >> Products:

| Cat. No. | Product   | Size              | Price    |
|----------|---|-------------------|----------|
| L00315   | ONE-HOUR Western™ Multiplex Kit I (GAPDH), Rabbit       | 1 Kit (10 Assays) | \$345.00 |
| L00316   | ONE-HOUR Western™ Multiplex Kit I (GAPDH), Mouse        | 1 Kit (10 Assays) | \$345.00 |
| L00317   | ONE-HOUR Western™ Multiplex Kit I (GAPDH), Goat         | 1 Kit (10 Assays) | \$345.00 |
| L00318   | ONE-HOUR Western™ Multiplex Kit II (β-Actin), Rabbit    | 1 Kit (10 Assays) | \$345.00 |
| L00319   | ONE-HOUR Western™ Multiplex Kit II (β-Actin), Mouse     | 1 Kit (10 Assays) | \$345.00 |
| L00320   | ONE-HOUR Western™ Multiplex Kit II (β-Actin), Goat      | 1 Kit (10 Assays) | \$345.00 |
| L00321   | ONE-HOUR Western™ Multiplex Kit III (α-Tubulin), Rabbit | 1 Kit (10 Assays) | \$345.00 |
| L00322   | ONE-HOUR Western™ Multiplex Kit III (α-Tubulin), Mouse  | 1 Kit (10 Assays) | \$345.00 |
| L00323   | ONE-HOUR Western™ Multiplex Kit III (α-Tubulin), Goat   | 1 Kit (10 Assays) | \$345.00 |

Loading controls are indispensable to get meaningful Western blot results. Researchers usually need to perform two Western blots by either cutting the membrane into two halves or by stripping the membrane after the first blot to detect the target protein and the internal control separately. These stripping and reprobing actions for the loading controls can take your ten hours or more on a single blot.

GenScript now introduces the ONE-HOUR Western™ Multiplex Kits, which can detect both the target protein and internal control in a single blot on the same membrane. Using GenScript's breakthrough ONE-HOUR Western™ technology, these kits can replace the classical three-step Western and complete the Western blot in about one hour.

ONE-HOUR Western™ Multiplex Kits are designed for different internal controls, including GAPDH (Kit I), β-actin (Kit II), and α-tubulin (Kit III), the three most widely used housekeeping proteins. This series of kits contains the corresponding antibodies and all the necessary reagents to facilitate your experiment.

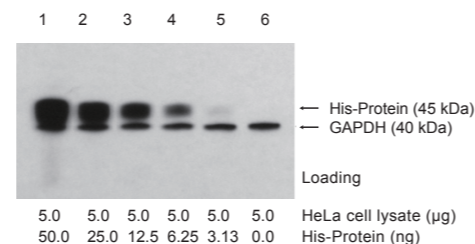
### >> Key Features:

Besides the universal advantages of ONE-HOUR Western™ Kits, ONE-HOUR Western™ Multiplex Kits possess the following special superiority:

- 1. Flexible:** Available with the most widely used loading controls: GAPDH, β-actin, and α-tubulin for rabbit, mouse, and goat primary antibodies.
- 2. Convenient:** Built-in loading controls give you more convenience in research.
- 3. Low Background:** WestClear™ Nitrocellulose Membrane and LumiSensor™ Plus Chemiluminescent HRP Substrate Kit included in the kits are optimized for ultra low background.

### >> Example:

Detection of GAPDH and a His-tagged protein in HeLa cell lysate (BD Biosciences, #611449) spiked with a His-tagged protein using ONE-HOUR Western™ Multiplex Kit I (GAPDH), Rabbit (GenScript, L00315).



## ONE-HOUR IP-Western Kits

### >> Products:

| Cat. No. | Product                          | Size              | Price    |
|----------|----------------------------------|-------------------|----------|
| L00231   | ONE-HOUR IP-Western Kit (Rabbit) | 1 Kit (10 Assays) | \$375.00 |
| L00232   | ONE-HOUR IP-Western Kit (Mouse)  | 1 Kit (10 Assays) | \$375.00 |
| L00233   | ONE-HOUR IP-Western Kit (Goat)   | 1 Kit (10 Assays) | \$375.00 |

Immunoprecipitation (IP), or "pull-down," is one of the most common techniques in immunochemistry. IP is usually performed using a primary antibody with either a secondary antibody resin or protein A, G, or A/G resin. IP is routinely used in the identification and verification of protein-protein interactions or the protein quantity determination.

After IP, Western blot is used to detect any protein associated with the primary antibody. One long-standing problem of the Western blot assay, however, is the obscuring results caused by the blots on the membrane which are resulted from the contamination of the primary antibody, the secondary antibody, or proteins A or G.

IP-Western analysis frequently suffers from heavy/light chain, Protein A and G contamination, particularly when the molecular weights of the target proteins are close to those of the contaminants. All these problems can now be solved using GenScript's ONE-HOUR IP-Western Kits. As a bonus, the analysis time can be reduced to one hour through our timesaving ONE-HOUR Western™ technology. Furthermore, this breakthrough technology gives our customers several significant advantages: enhanced sensitivity, elimination of background noise, and increased chances of identifying rare proteins.

So what are you waiting for? Please order now!

### >> Key Features:

- Eliminates all contamination:** GenScript's proprietary blocking reagents eliminate all contamination from antibody heavy chains, light chains, and proteins A and G.
- High Sensitivity:** The sensitivity of our ONE-HOUR IP-Western Kit is comparable to or better than that of the classical three-step Western blot kits. Taking the reduced background into account, the effective sensitivity of the ONE-HOUR IP-Western is even higher.
- Reproducible Results:** The high quality of the reagents in this kit ensure the consistency of the kit's performance and the reproducibility of analysis results.
- Easy to Perform:** Our ONE-HOUR IP-Western Kit has fewer and simpler steps than classical Western blot kits, leaving less room for human error.
- No secondary antibody is needed.**

» **Technology overview:**

GenScript has developed several solutions (included in the kits) that selectively bind and block both heavy and light chains of primary antibodies and proteins A and G used for IP, preventing cross-reactivity between:

1. The antibody used for IP and the secondary antibody used for Western blotting
2. The proteins A and/or G used for IP and primary and secondary antibodies used for Western blotting

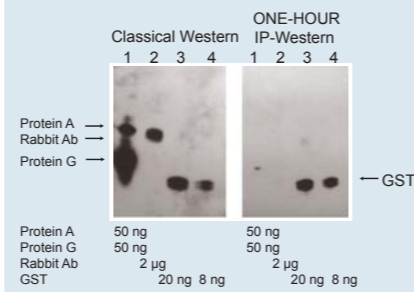
The proprietary secondary antibody is integrated into the IP-WB solution, which comes with the kits. You don't need to worry about secondary antibody optimization.

» **Examples:**

**1. Comparison of ONE-HOUR IP-Western blot and classical IP-Western**

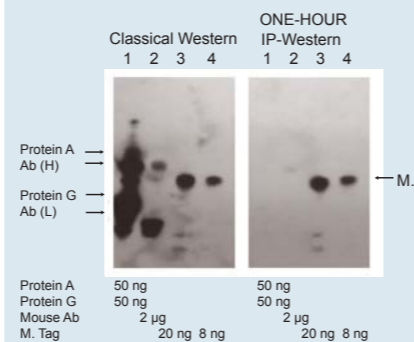
**blot for the detection of GST protein using Rabbit Anti-GST-tag Polyclonal Antibody (GenScript, A00097)**

- Left Panel: Classical Western blot detection (4.5 hours)
- Right Panel: ONE-HOUR IP-Western blot detection (1 hour)



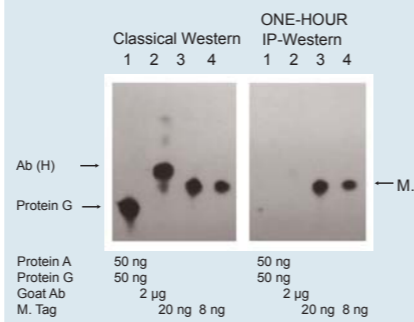
**2. Comparison of ONE-HOUR IP-Western blot and classical Western blot for the detection of multiple tag fusion protein using Mouse Anti-Trx-tag Monoclonal Antibody (GenScript, A00180):**

- Left Panel: Classical Western blot detection (4.5 hours)
- Right Panel: ONE-HOUR IP-Western blot detection (1 hour)

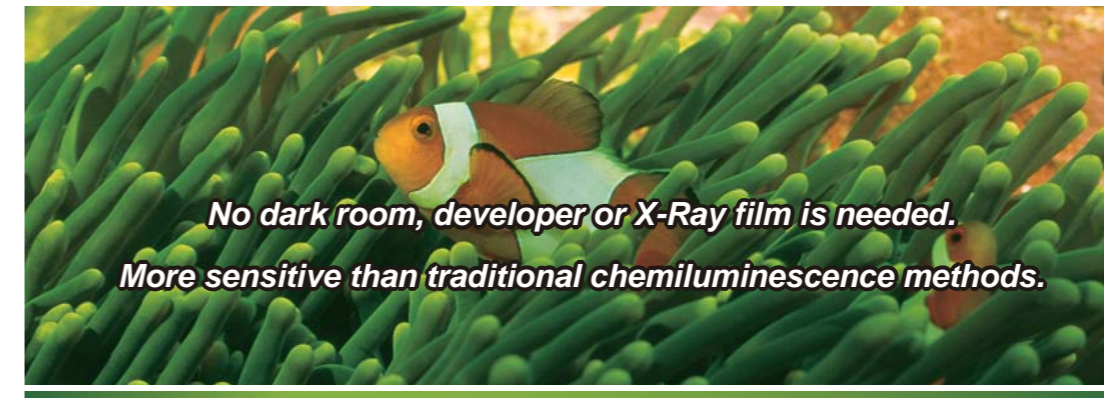


**3. Comparison of ONE-HOUR IP-Western blot and classical Western blot for the detection of multiple tag fusion protein using Goat Anti-HA-tag Polyclonal Antibody (GenScript, A00168):**

- Left Panel: Classical Western blot detection (4.5 hours)
- Right Panel: ONE-HOUR IP-Western blot detection (1 hour)



**ONE-HOUR Western™ Fluorescent Western kit *NEW!***



» **Products:**

| Cat. No. | Product                           | Size              | Price    |
|----------|-----------------------------------|-------------------|----------|
| L00397   | ONE-HOUR Western™ Fluorescent Kit | 1 Kit (10 Assays) | \$185.00 |

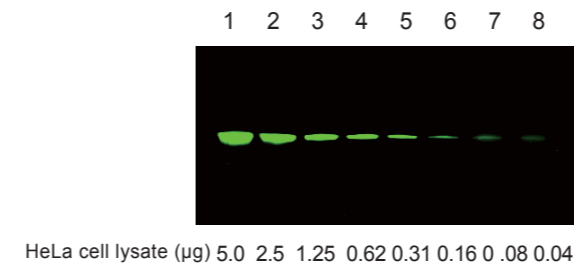
GenScript's ONE-HOUR Western™ Fluorescent Kit yields journal quality Western or Dot blot results in about one hour. Using GenScript's breakthrough immunodetection technology (patent pending), the kit replaces the classical three-step Western process which takes nearly five hours. Transfer the proteins from gel to membrane and incubate it in the pretreat solution for five minutes. Then incubate the membrane in WB solution with primary antibody and secondary antibody labeled with fluorescent dye for 40 minutes. After washing three times for ten minutes each, the membrane can then be scanned on LI-COR Odyssey Infrared Imaging System.

» **Key Features:**

1. ONE-HOUR Western™ Kits cut Western blot analysis time down to ONE hour.
2. Any primary antibody from any species can be used.
3. More sensitive than traditional chemiluminescence methods.

» **Examples:**

Fluorescent Western blot detection of GAPDH using Goat Anti-GAPDH Polyclonal Antibody (GenScript, A00191).



Fluorescent Western blots for the detection of GAPDH using the ONE-HOUR Western™ Fluorescent Kit (GenScript, L00397). 5.0, 2.5, 1.25, 0.62, 0.31, 0.16, 0.08 and 0.04 µg of HeLa cell lysates were loaded into lanes 1, 2, 3, 4, 5, 6, 7 and 8 respectively.

Mixture 1 was prepared by mixing 6 µg of Goat Anti-GAPDH Polyclonal Antibody (GenScript, A00191) with 3 µg of IRDye®800CW Donkey anti-Goat (LI-COR) in 100 µl of WB-1.

## ONE-HOUR Western™ Multiplex Fluorescent Kit **NEW!**

### >> Products:

| Cat. No. | Product                                     | Size              | Price    |
|----------|---|-------------------|----------|
| L00398   | ONE-HOUR Western™ Multiplex Fluorescent Kit | 1 Kit (10 Assays) | \$245.00 |

GenScript's ONE-HOUR Western™ Multiplex Fluorescent Kit yields journal quality results in about one hour using our immunodetection technology (patent pending). This kit allows researchers to detect multiple antigens using multiple antibodies on the same membrane at the same time. The process includes five minutes incubation of the protein transferred membrane with the pretreat solution and 40 minutes incubation with WB-M solution together with primary antibodies and corresponding fluorescent dye labeled secondary antibodies. After washing three times for ten minutes each the membrane can then be scanned on LI-COR Odyssey Infrared Imaging System.

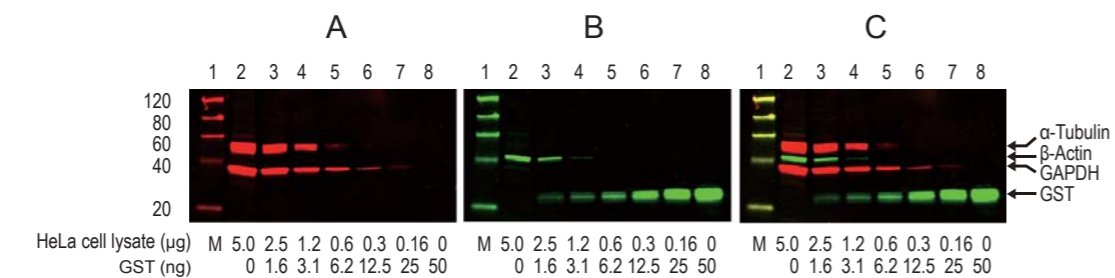
The ONE-HOUR Western™ Multiplex Fluorescent Kit is designed to produce high signal on low background for quick and clear Western blot analysis for multiple proteins. This kit can be used for any primary antibody raised from rabbit, mouse, and goat. The corresponding fluorescent-dye labeled secondary antibodies are also needed.

### >> Key Features:

- No cross-reaction.**
- Rabbit, mouse, and goat primary antibodies can be used.**
- Detect multiple targets in about ONE HOUR on a single blot.**

### >> Examples:

Simultaneous detection of  $\alpha$ -Tubulin,  $\beta$ -Actin, GAPDH and GST proteins using the ONE-HOUR Western™ Multiplex Fluorescent Kit (L00398).



A: 700 nm fluorescence image;

B: 800 nm fluorescence image;

C: The two fluorescence colors were imaged simultaneously in a single scan on a LI-COR Odyssey Infrared Imaging Systems;

M: Protein Marker for Fluorescent Western Blotting (GenScript, M00124).

$\alpha$ -Tubulin was immunoblotted with Mouse Anti- $\alpha$ -Tubulin mAb (Sigma, T6074) and IRDye®680 Donkey Anti-Mouse.

$\beta$ -Actin was immunoblotted with Mouse Anti- $\beta$ -Actin mAb (GenScript, A00702) and IRDye®800CW Goat Anti-Mouse.

GAPDH was immunoblotted with Goat Anti-GAPDH pAb (GenScript, A00191) and IRDye®680 Donkey Anti-Goat.

GST was immunoblotted with Rabbit Anti-GST pAb (GenScript, A00097) and IRDye®800CW Goat Anti-Rabbit.

## Accessories

### Western Quick Block Kit

| Cat. No. | Product                                | Size  | Price    |
|----------|--|-------|----------|
| L00276   | Western Quick Block Kit                | 1 Kit | \$175.00 |
| L00278   | Western Quick Block Optimization Kit   | 1 Kit | \$195.00 |
| L00279   | Customerized Western Quick Block Kit A | 1 Kit | \$175.00 |
| L00280   | Customerized Western Quick Block Kit B | 1 Kit | \$175.00 |
| L00281   | Customerized Western Quick Block Kit C | 1 Kit | \$175.00 |
| L00282   | Customerized Western Quick Block Kit D | 1 Kit | \$175.00 |

### Express™ PAGE Gels

| Cat. No. | %Acryl- amide | Wells | Wel Vol.   | Separation Range | Size        | Price   |
|----------|---------------|-------|------------|------------------|-------------|---------|
| MG008W10 | 8%            | 10    | 50 $\mu$ l | 205-45 kDa       | 1 Box of 10 | \$68.00 |
| MG010W10 | 10%           | 10    | 50 $\mu$ l | 205-24 kDa       | 1 Box of 10 | \$68.00 |
| MG012W10 | 12%           | 10    | 50 $\mu$ l | 205-14 kDa       | 1 Box of 10 | \$68.00 |
| MG420W10 | 4-20%         | 10    | 50 $\mu$ l | 205-6.5 kDa      | 1 Box of 10 | \$68.00 |
| MG816W10 | 8-16%         | 10    | 50 $\mu$ l | 205-14 kDa       | 1 Box of 10 | \$68.00 |
| MG008W12 | 8%            | 12    | 30 $\mu$ l | 205-45 kDa       | 1 Box of 10 | \$68.00 |
| MG010W12 | 10%           | 12    | 30 $\mu$ l | 205-24 kDa       | 1 Box of 10 | \$68.00 |
| MG012W12 | 12%           | 12    | 30 $\mu$ l | 205-14 kDa       | 1 Box of 10 | \$68.00 |
| MG420W12 | 4-20%         | 12    | 30 $\mu$ l | 205-6.5 kDa      | 1 Box of 10 | \$68.00 |
| MG816W12 | 8-16%         | 12    | 30 $\mu$ l | 205-14 kDa       | 1 Box of 10 | \$68.00 |
| MG008W15 | 8%            | 15    | 25 $\mu$ l | 205-45 kDa       | 1 Box of 10 | \$68.00 |
| MG010W15 | 10%           | 15    | 25 $\mu$ l | 205-24 kDa       | 1 Box of 10 | \$68.00 |
| MG012W15 | 12%           | 15    | 25 $\mu$ l | 205-14 kDa       | 1 Box of 10 | \$68.00 |
| MG420W15 | 4-20%         | 15    | 25 $\mu$ l | 205-6.5 kDa      | 1 Box of 10 | \$68.00 |
| MG816W15 | 8-16%         | 15    | 25 $\mu$ l | 205-14 kDa       | 1 Box of 10 | \$68.00 |

### ONE-HOUR Western™ Detection Substrates

| Cat. No.   | Name  | Size             | Price    |
|------------|---|------------------|----------|
| L00221V60  | LumiSensor™ Chemiluminescent HRP Substrate Kit      | 1 Kit (2×30 ml)  | \$55.00  |
| L00221V300 | LumiSensor™ Chemiluminescent HRP Substrate Kit      | 1 Kit (2×150 ml) | \$145.00 |
| L00221V500 | LumiSensor™ Chemiluminescent HRP Substrate Kit      | 1 Kit (2×250 ml) | \$235.00 |
| L00225     | LumiSensor™ Plus Chemiluminescent HRP Substrate Kit | 1 Kit (2×30 ml)  | \$89.00  |
| L00354     | LumiSensor™ Super HRP Substrate                     | 1 Kit            | \$135.00 |
| L00222V60  | ChromoSensor™ One-Solution TMB Substrate            | 1 pk (60 ml)     | \$28.00  |
| L00222V125 | ChromoSensor™ One-Solution TMB Substrate            | 1 pk (125 ml)    | \$39.00  |
| L00222V250 | ChromoSensor™ One-Solution TMB Substrate            | 1 pk (250 ml)    | \$68.00  |
| L00222V500 | ChromoSensor™ One-Solution TMB Substrate            | 1 pk (500 ml)    | \$119.00 |

### WestClear™ Nitrocellulose Membrane

| Cat. No.   | Name                               | Size                         | Price   |
|------------|------------------------------------|------------------------------|---------|
| L00224A60  | WestClear™ Nitrocellulose Membrane | 1 pk (10 sheets of 7.5×8 cm) | \$60.50 |
| L00224A225 | WestClear™ Nitrocellulose Membrane | 1 pk (5 sheets of 15×15 cm)  | \$75.90 |

### Solutions

| Cat. No. | Name   | Size   | Price    |
|----------|--|--------|----------|
| MB01011  | 10X Wash Solution for ONE-HOUR Western™ Kits | 100 ml | \$65.00  |
| M01014   | A&G Blocker (100X)                           | 1 ml   | \$20.00  |
| M01013   | Pretreat A (100 ml) and B (100 ml) Solutions | 1 pk   | \$145.00 |
| M01015   | Stripping Solution                           | 100 ml | \$29.50  |
|          |  | 500 ml | \$89.50  |
| M01057   | Pretreat A-b solution                        | 100 ml | \$28.00  |

### Labware

| Cat. No. | Name                      | Size       | Price   |
|----------|---------------------------|------------|---------|
| M00100   | Western Wash Box (Clear)  | 1 pk of 10 | \$80.00 |
| M00101   | Western Wash Box (Blue)   | 1 pk of 10 | \$80.00 |
| M00102   | Western Wash Box (Yellow) | 1 pk of 10 | \$80.00 |
| M00103   | Western Wash Box (Black)  | 1 pk of 10 | \$80.00 |
| M00108   | Dot Blot Box (Clear)      | 1 pk of 10 | \$98.00 |
| M00109   | Dot Blot Box (Blue)       | 1 pk of 10 | \$98.00 |
| M00110   | Dot Blot Box (Yellow)     | 1 pk of 10 | \$98.00 |
| M00099   | Western Membrane Forceps  | 1 pk of 10 | \$50.00 |

## Related Products

### Magnetic Bead Products

| Cat. No. | Name                              | Size    | Price    |
|----------|-----------------------------------|---------|----------|
| L00275   | Anti-His mAb MagBeads             | 5 mg    | \$197.00 |
| L00295   | Ni-Charged Magnetic Beads         | 2 ml    | \$98.00  |
| L00273   | Protein A MagBeads                | 1 ml    | \$89.00  |
| L00274   | Protein G MagBeads                | 0.5 ml  | \$125.00 |
| L00277   | Protein A/G MagBeads              | 0.5 ml  | \$148.00 |
| L00328   | Goat Anti-Rabbit IgG MagBeads     | 1 ml    | \$159.00 |
| L00332   | Donkey Anti-Goat IgG MagBeads     | 1 ml    | \$159.00 |
| L00336   | Mouse Anti-GST mAb MagBeads       | 1 ml    | \$159.00 |
| L00337   | Mouse Anti-Trx mAb MagBeads       | 1 ml    | \$159.00 |
| M00112   | 2-Tube Magnetic Separation Racks  | 2-tube  | \$29.00  |
| M00113   | 12-Tube Magnetic Separation Racks | 12-tube | \$79.00  |

### Antibody Purification Resins

| Cat. No. | Name            | Size   | Price    |
|----------|-----------------|--------|----------|
| L00209   | Protein G Resin | 5 ml   | \$129.00 |
| L00210   | Protein A Resin | 5 ml   | \$98.00  |
| L00239   | Protein L Resin | 2.5 ml | \$145.00 |

### Protein Markers

| Cat. No. | Name   | Size      | Price   |
|----------|--|-----------|---------|
| MM0900   | Smart Protein Standard (Middle-Range)            | 100 lanes | \$49.00 |
| MM0904   | Smart His-tagged Protein Standard                | 100 lanes | \$98.00 |
| MM0905   | Smart Prestained Protein Standard (Middle-Range) | 100 lanes | \$95.00 |
| MM0906   | Smart Broad-Range Protein Standard               | 100 lanes | \$58.00 |
| MM0907   | Smart Peptide Protein Standard                   | 50 lanes  | \$58.00 |
| MM0908   | EasyWestern Protein Standard                     | 100 lanes | \$68.00 |
| M00124   | Protein Marker for Fluorescent Western Blotting  | 100 lanes | \$68.00 |

### Loading Control Antibodies

| Cat. No. | Name                                | Size   | Price    |
|----------|-------------------------------------|--------|----------|
| A00702   | THE™ Anti-β-Actin mAb (Mouse)       | 40 µg  | \$69.00  |
|          |                                     | 200 µg | \$311.00 |
| A00730   | THE™ Anti-β-Actin [HRP] mAb (Mouse) | 40 µg  | \$74.00  |
|          |                                     | 200 µg | \$333.00 |
| A00200   | Anti-α-Tubulin mAb (Mouse)          | 100 µg | \$225.00 |
| A00885   | Anti-α-Actin-1 pAb (Rabbit)         | 40 µg  | \$50.00  |
|          |                                     | 200 µg | \$225.00 |
| A00084   | Anti-GAPDH mAb (Mouse)              | 100 µg | \$259.00 |
| A00191   | Anti-GAPDH pAb (Goat)               | 40 µg  | \$50.00  |
|          |                                     | 200 µg | \$225.00 |
| A00192   | Anti-GAPDH [HRP] pAb (Goat)         | 40 µg  | \$60.00  |
|          |                                     | 200 µg | \$270.00 |
| A00915   | Anti-GAPDH [Biotin] pAb (Goat)      | 40 µg  | \$60.00  |
|          |                                     | 200 µg | \$270.00 |