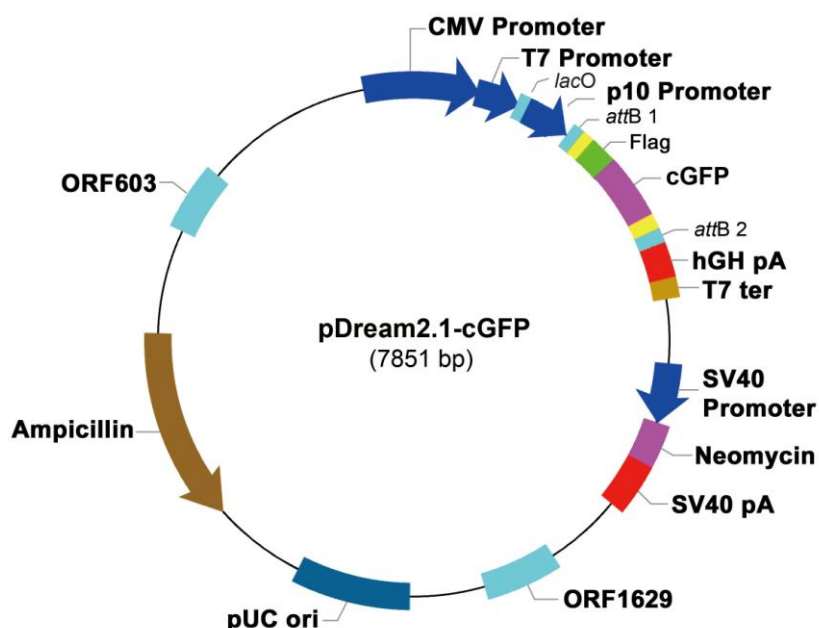


Datasheet Update: 04302009

pDream2.1-cGFP Vector

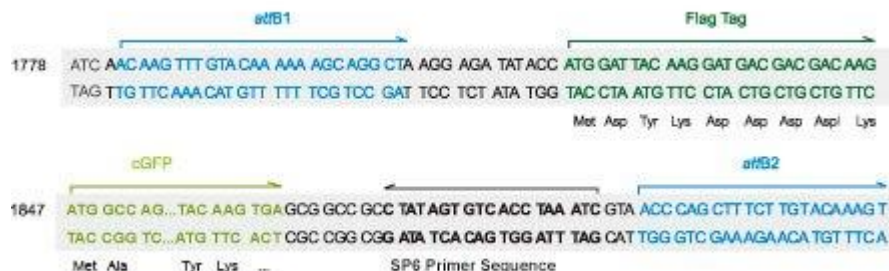
Cat. No. SD0220

Description: GenScript pDream2.1-cGFP vector is a positive control vector. cGFP gene was cloned into pDream2.1/Neo and can be expressed directly without any further cloning work in any one of the three major protein expression systems: Bacteria, Insect cells and Mammalian cells. This vector, with the cGFP gene flanked by *attB1* and *attB2* sequences, is compatible with Invitrogen Gateway™ system. This allows you to move the cGFP gene into other expression vectors from Invitrogen if needed.



CMV Promoter:	1036-1618
T7 Promoter:	1625-1641
P10 Promoter:	1667-1780
<i>attB</i> 1:	1782-1806
cGFP:	1847-2566
<i>attB</i> 2:	2597-2621
SV40 promoter:	3692-4037
Neomycin:	4078-4872
Ampicillin:	6929-7789
pUC ori:	6297-6928
ORF603:	55-1021
ORF1629:	5613-6119

Cloning Region:



Sequencing Primers:

Forward primer DA0009: T7 (TAATACGACTCACTATAGGG)

Reverse primer DA0008: SP6 (TACGATTTAGGTGACACTATAG)

Features:

1. **CMV promoter** is for high-level constitutive expression of genes in a variety of mammalian cell lines.
2. **T7 promoter** is for convenient expression of genes in bacteria and *in vitro* transcription/translation analysis (tm0180).
3. **P10 baculovirus promoter** is for high-level expression of genes in baculovirus-infected insect cells.
4. **A Flag tag sequence** is placed before cGFP for the single column purification and specific detection of the fused protein using specific and sensitive anti-Flag antibodies.
5. **The Flag tag sequence** is also the cleavage site by enterokinase (EK) to generate an authentic protein starting with Methionine.
6. **This vector with attB1 and attB2 sequences** flanking cGFP is compatible with Invitrogen Gateway Technology and can be used to move DNA sequence (any genes) into multiple vector systems for functional analysis and protein expression.

* **Limited Use Label License:** The use of CMV promoter is covered under U. S. Patent No. 5,168,062 and 5,385,839 owned and licensed by the University of Iowa Research Foundation and is sold for research use only. Commercial users must obtain a license to these patents directly from the University of Iowa Research Foundation (UIRF), 214 Technology Innovation Center, Iowa City, Iowa 52242. For further information, please contact the Associate Director of UIRF, at 319-335-4546.