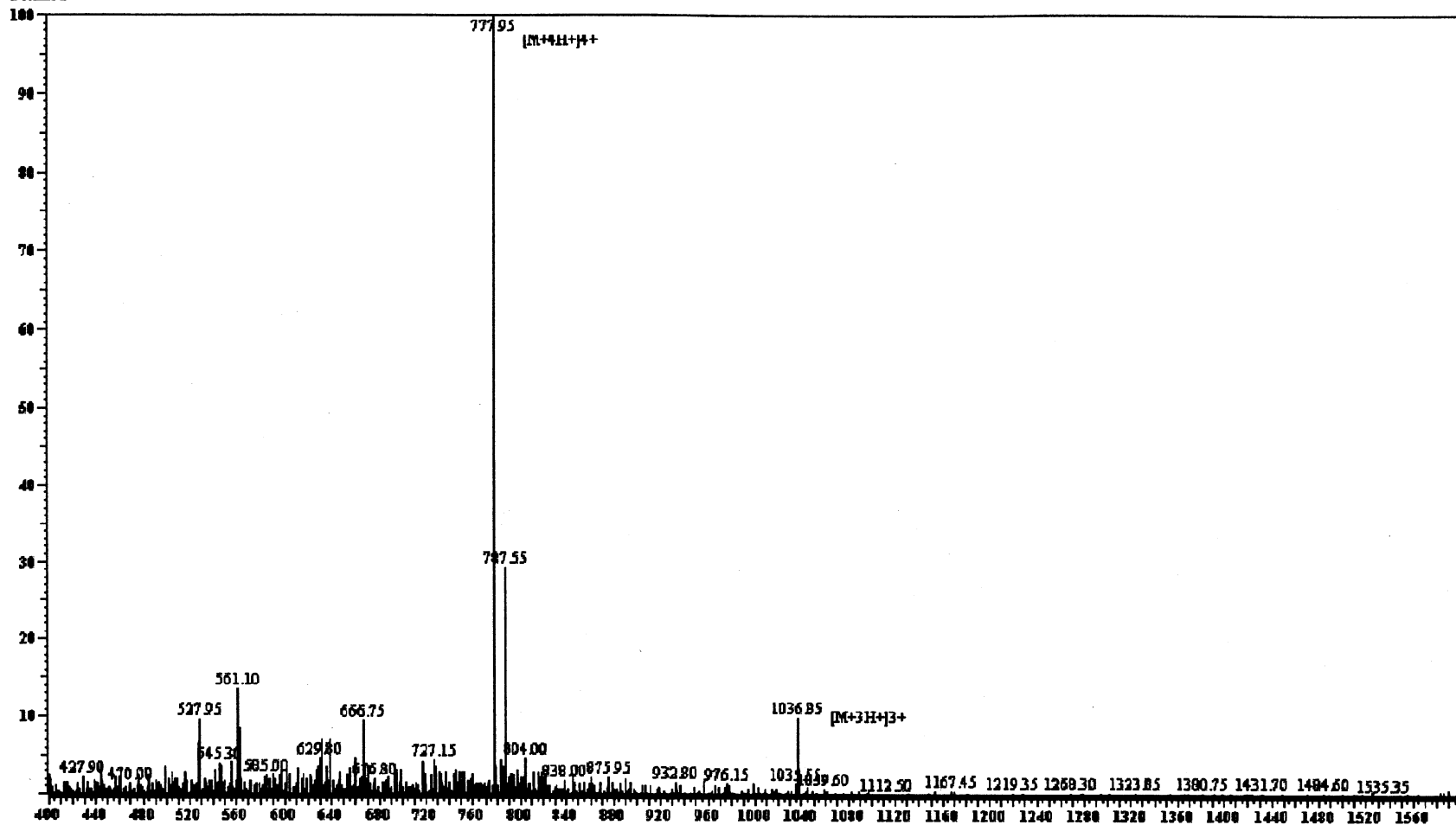


M/S Spectrum

Positive



Sample Information Item:
Date and Time : 2005-3-10 18:56:11
User : EJS
Sample : SN-28
Inj. Volume : 1.000
MW : 3100.28

Cat. No. : RP10123
Lot. No. : PJ 00114503

Probe: ESI
Nebulizer Gas Flow: 1.5L/min
CDL: -20.0v
CDL Temp: 250°C
Block Temp: 200°C

Probe bias: +4.5kV
Detector: 1.5uV
T. Flow: 0.2ml/min
B. conc: 50%EtO/50%ACN

m/z