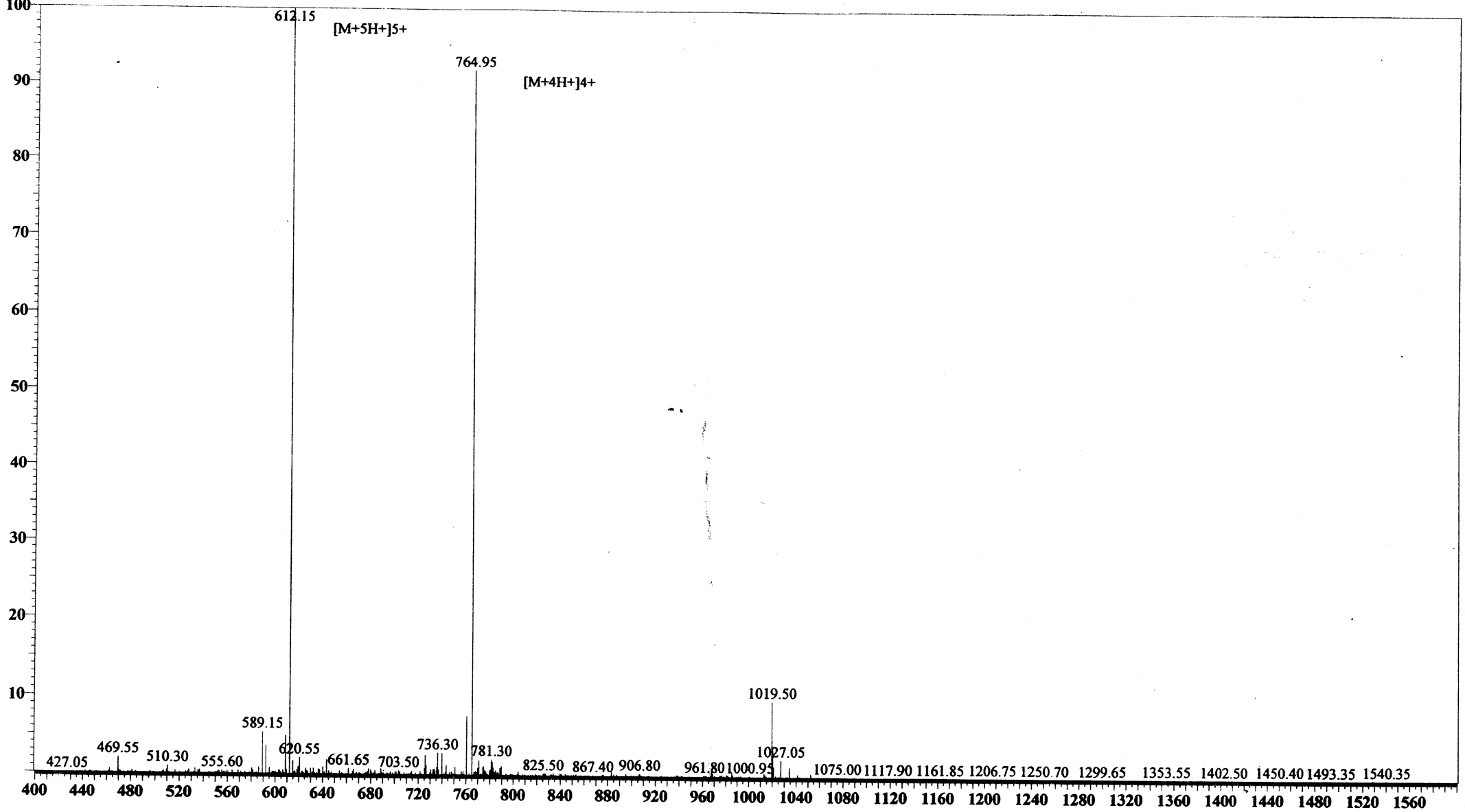


MS Spectrum

Positive



Sample Information Item
Date and Time : 2005-5-11 20:55:19
User : FJS
Sample : RP10247 HV-27-NH2
Inj. Volume : 1.000
MW : 3055.47

Cat. No.: RP10247
Lot No.: PX00309510

Probe:	ESI	Probe bias:	+4.5kv
Nebulizer Gas Flow:	1.5L/min	Detector:	1.5kv
CDL:	-20.0v	T. Flow:	0.2ml/min
CDL Temp:	250°C	B. conc:	50%H2O/50%ACN
Block Temp:	200°C		

m/z