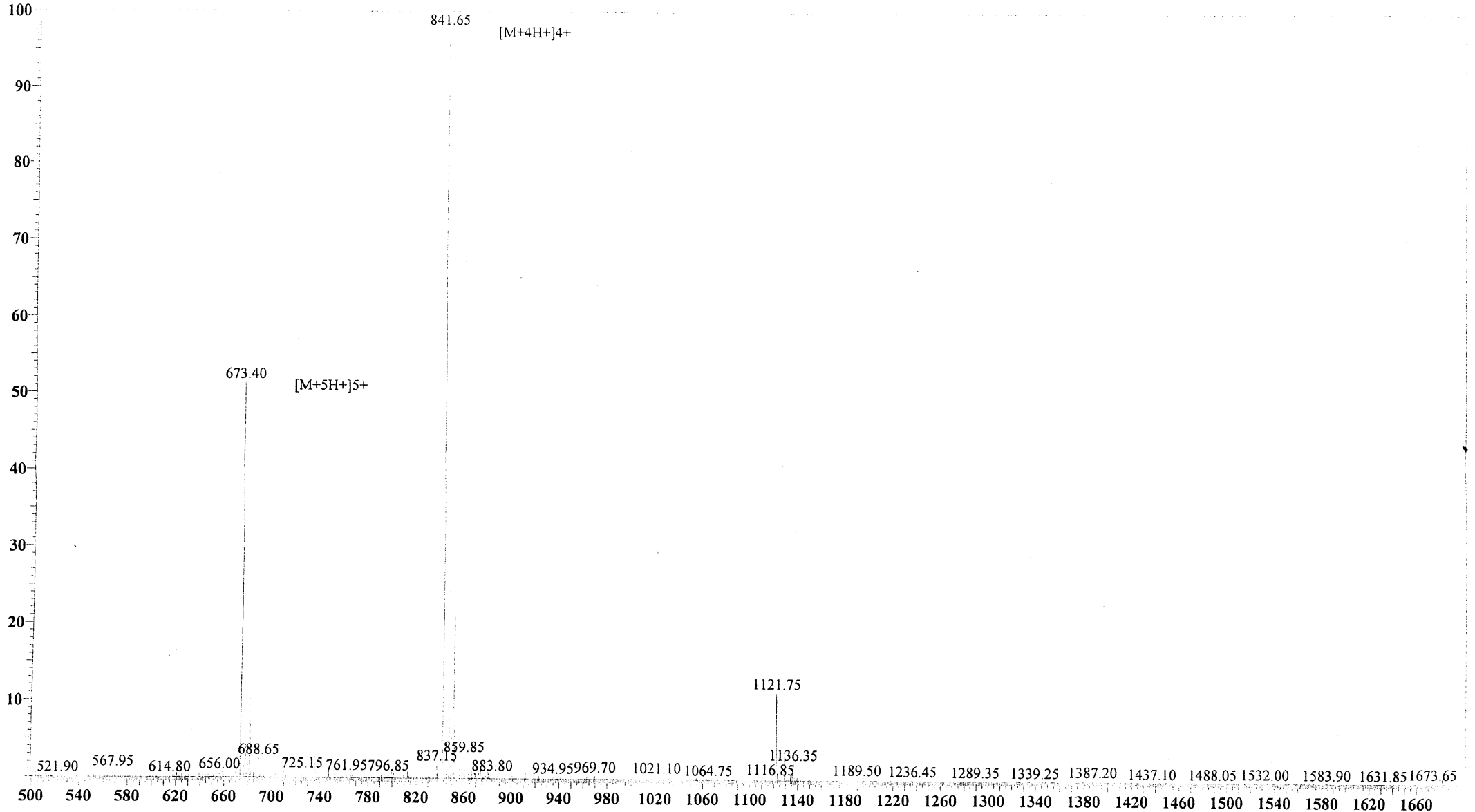


MS Spectrum

Positive



Sample Information Item

Date and Time : 2005-2-24 15:53:18
User : FJS
Sample : RP10342(DA-29-2)
Inj. Volume : 1.000
MW : 3361.90

Cat. No. : RP10342
Lot No. : PX00125502

Probe: ESI
Nebulizer Gas Flow: 1.5L/min
CDL: -20.0v
CDL Temp: 250°C
Block Temp: 200°C

Probe bias: +4.5kv
Detector: 1.5kv
T. Flow: 0.2ml/min
B. conc: 50%H2O/50%ACN

m/z