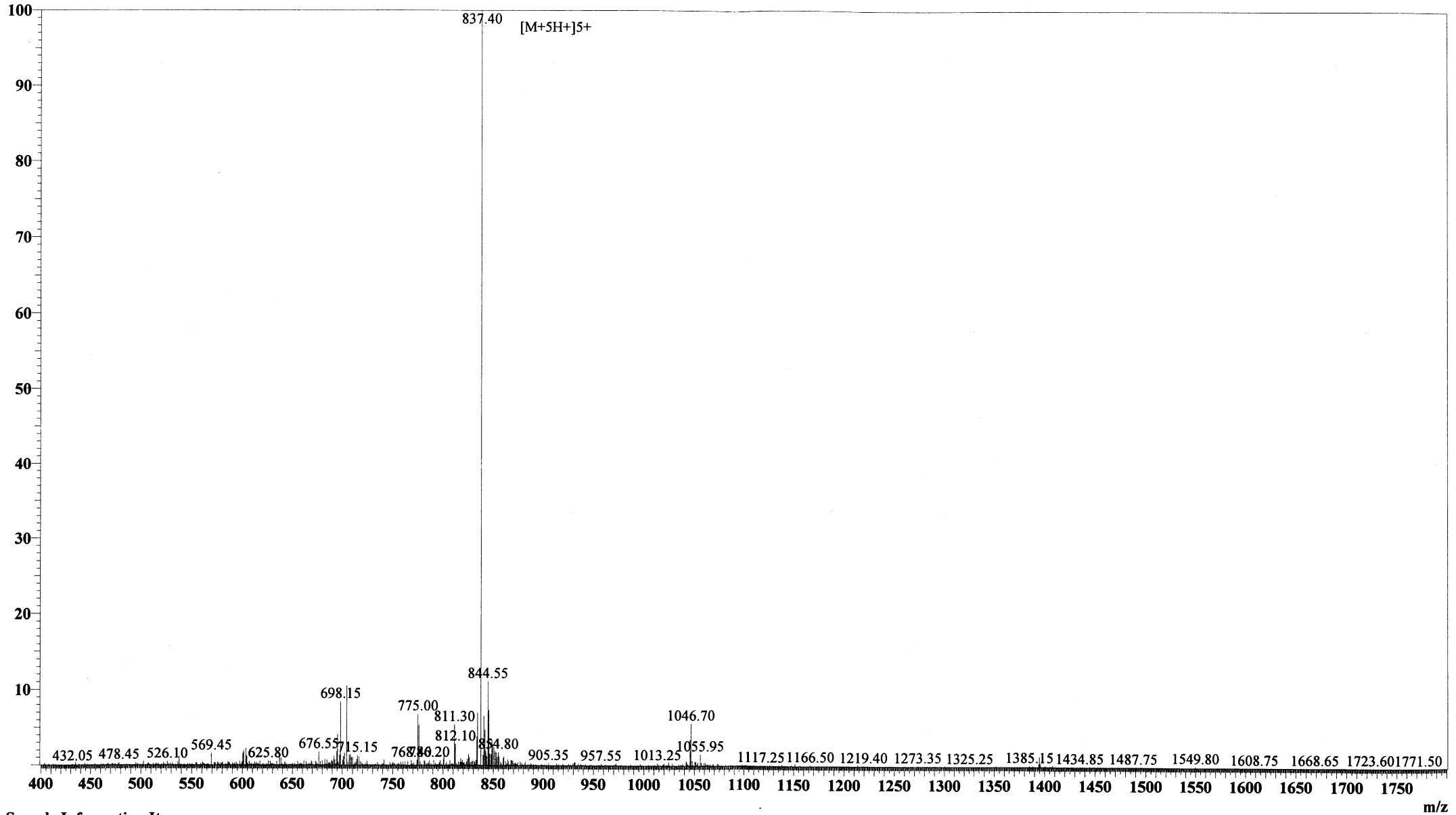


MS Spectrum

Positive



Sample Information Item

Date and Time : 2005-4-21 14:05:38  
User : xie  
Sample : RP10398 AY-36-1  
Inj. Volume : 1.000  
MW : 4181.8

Cat. No.: RP10398

Lot No.: PJ00501506

Probe: ESI  
Nebulizer Gas Flow: 1.5L/min  
CDL: -20.0v  
CDL Temp: 250°C  
Block Temp: 200°C

Probe bias: +4.5kv  
Detector: 1.5kv  
T. Flow: 0.2ml/min  
B. conc: 50%H2O/50%ACN