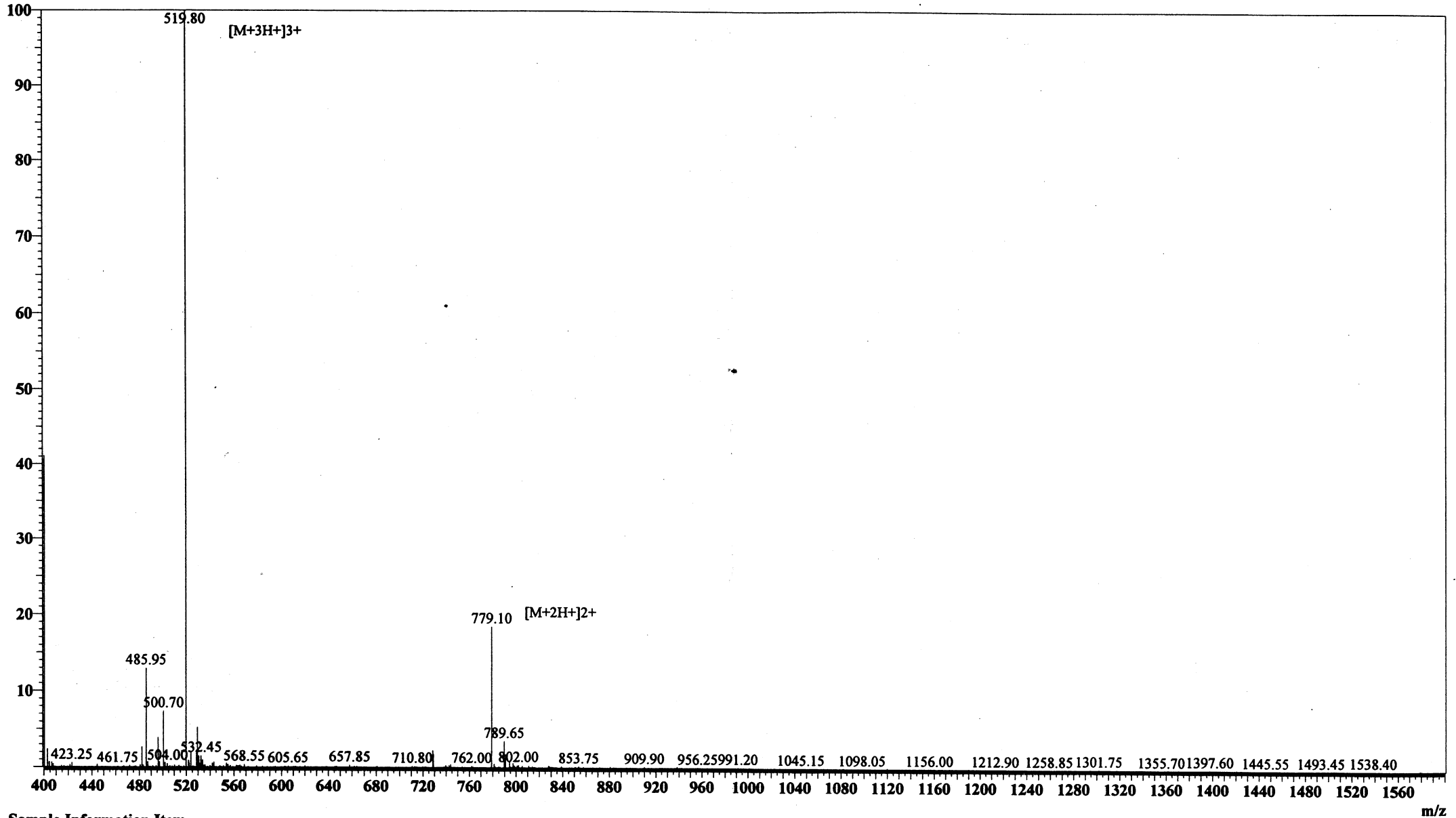


MS Spectrum

Positive



Sample Information Item

Date and Time : 2005-4-11 13:04:18
User : FJS
Sample : RP10466(IL-14-NH2)
Inj. Volume : 1.000
MW : 1556.01

Cat. No.: RP10466
Lot No.: PL00415506

Probe: ESI
Nebulizer Gas Flow: 1.5L/min
CDL: -20.0v
CDL Temp: 250°C
Block Temp: 200°C

Probe bias: +4.5kv
Detector: 1.5kv
T. Flow: 0.2ml/min
B. conc: 50%H2O/50%ACN