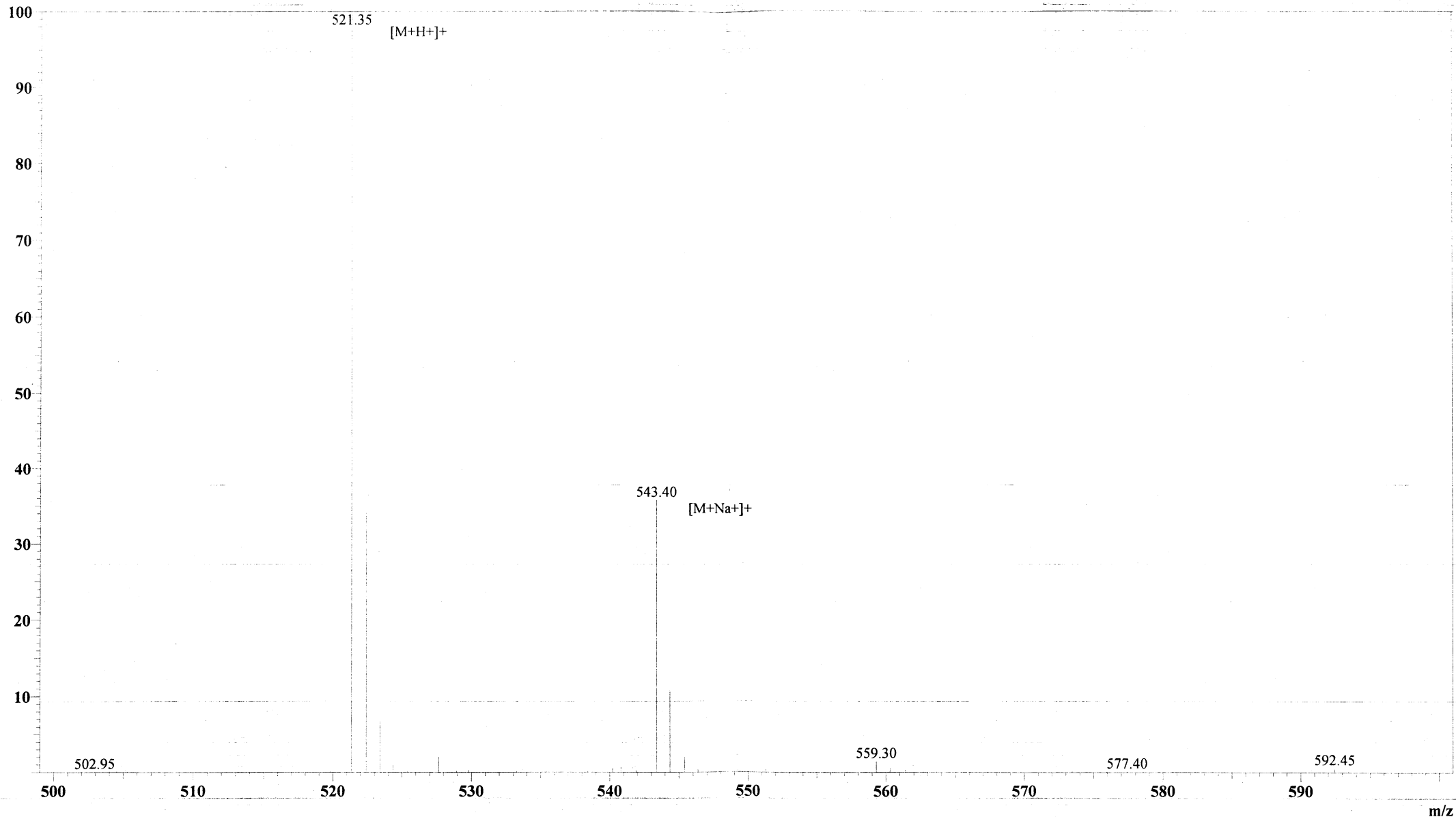


MS Spectrum

Positive



Sample Information Item

Date and Time : 2005-3-7 16:04:39  
User : FJS  
Sample : RP10477(YG-4-NH2-2)  
Inj. Volume : 1.000  
MW : 520.59

Cat. No.: RP10477

Lot No.: PL00508503

Probe: ESI  
Nebulizer Gas Flow: 1.5L/min  
CDL: -20.0v  
CDL Temp: 250°C  
Block Temp: 200°C

Probe bias: +4.5kv  
Detector: 1.5kv  
T. Flow: 0.2ml/min  
B. conc: 50%H2O/50%ACN