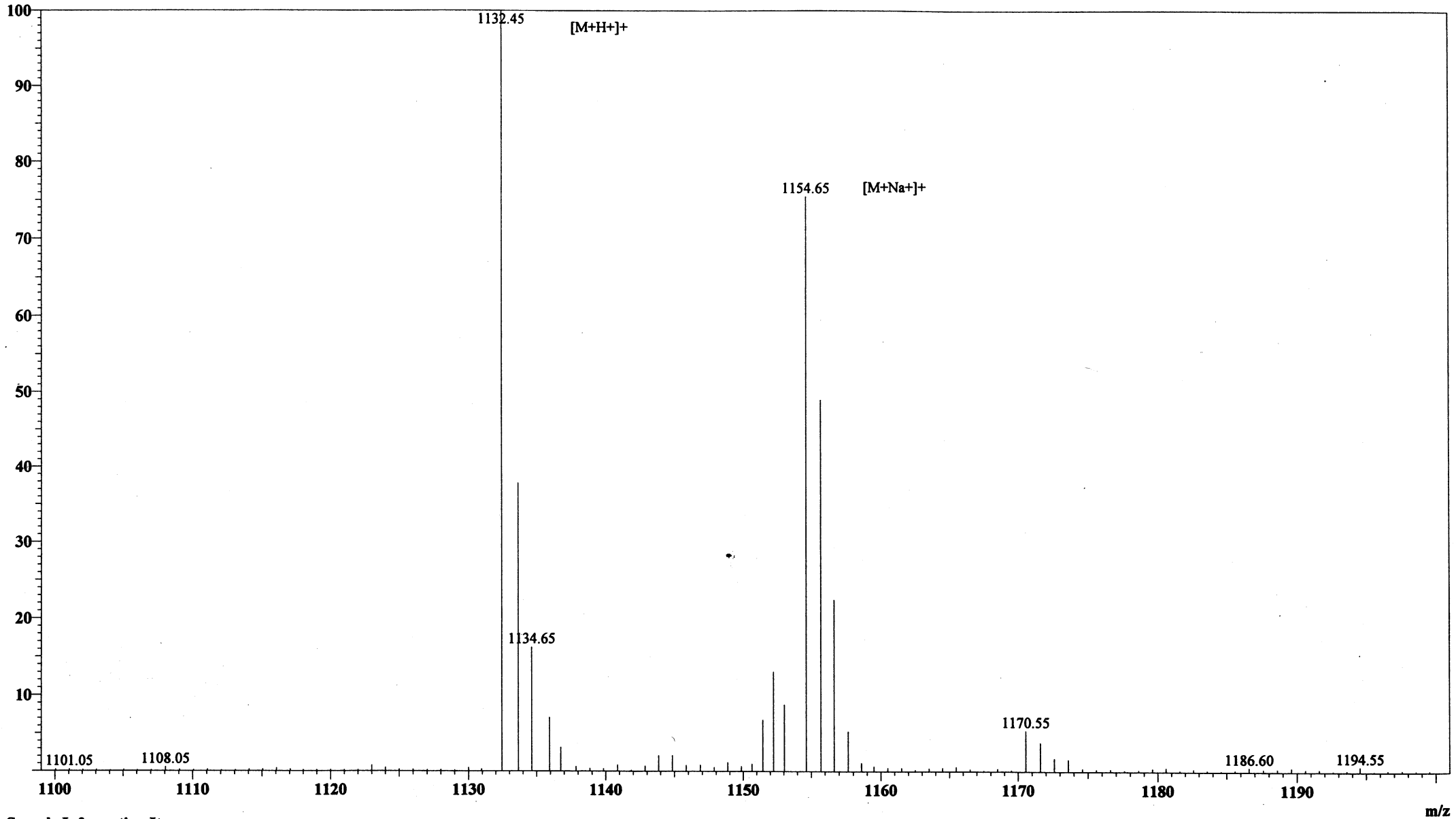


MS Spectrum

Positive



Sample Information Item

Date and Time : 2005-5-10 13:40:23  
User : xie  
Sample : RP10507 GM-10(1)-NH2  
Inj. Volume : 1.000  
MW : 1132.3

Cat. No.: RP10507  
Lot No.: PY00315506

Probe: ESI  
Nebulizer Gas Flow: 1.5L/min  
CDL: -20.0v  
CDL Temp: 250°C  
Block Temp: 200°C

Probe bias: +4.5kv  
Detector: 1.5kv  
T. Flow: 0.2ml/min  
B. conc: 50%H2O/50%ACN