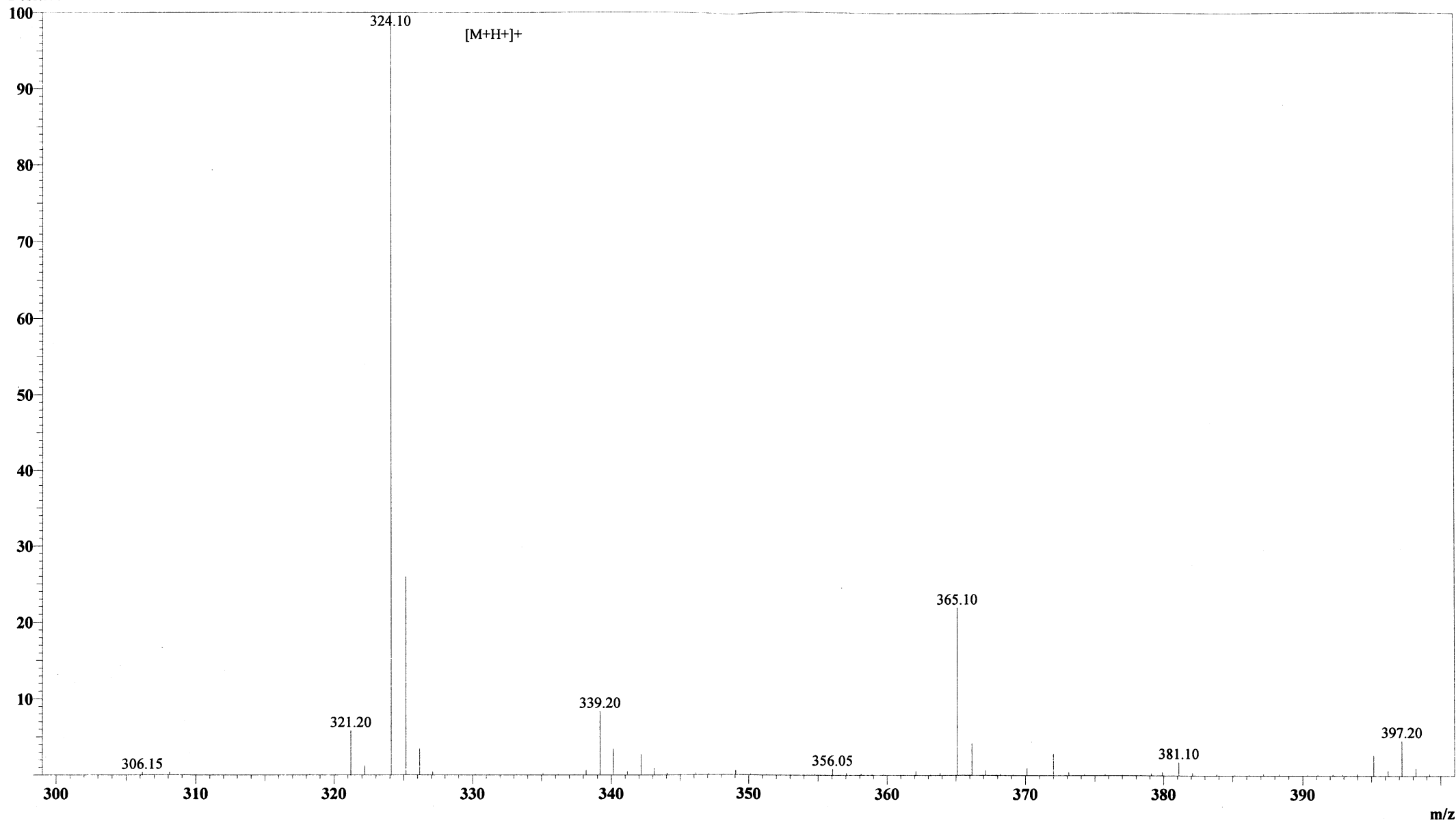


MS Spectrum

Positive



Sample Information Item

Date and Time : 2005-5-17 20:11:14
User : xie
Sample : RP10556 PEG-3
Inj. Volume : 1.000
MW : 323.33

Cat. No.: RP10556

Lot No.: PJ01006506

Probe: ESI
Nebulizer Gas Flow: 1.5L/min
CDL: -20.0v
CDL Temp: 250°C
Block Temp: 200°C

Probe bias: +4.5kv
Detector: 1.5kv
T. Flow: 0.2ml/min
B. conc: 50%H2O/50%ACN