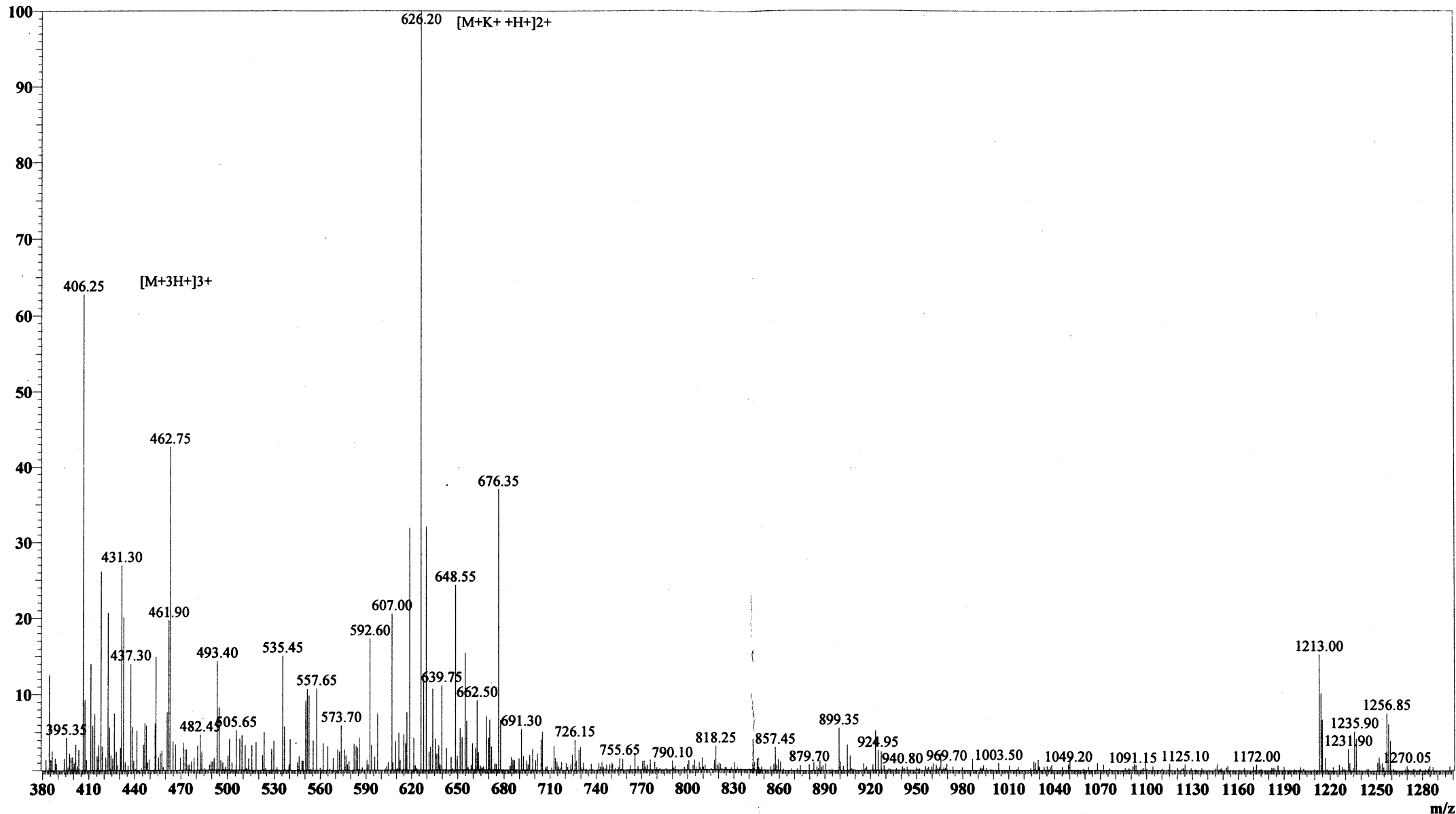


MS Spectrum

Positive



Sample Information Item

Date and Time : 2005-1-17 11:16:28  
User : xie  
Sample : RP10673(pEG-10-NH2)  
Inj. Volume : 1.000  
MW : 1212.34

Cat. No.: RP10673

Lot No.: PJ00210505

Probe: ESI  
Nebulizer Gas Flow: 1.5L/min  
CDL: -20.0v  
CDL Temp: 250°C  
Block Temp: 200°C

Probe bias: +4.5kv  
Detector: 1.5kv  
T. Flow: 0.2ml/min  
B. conc: 50%H2O/50%ACN