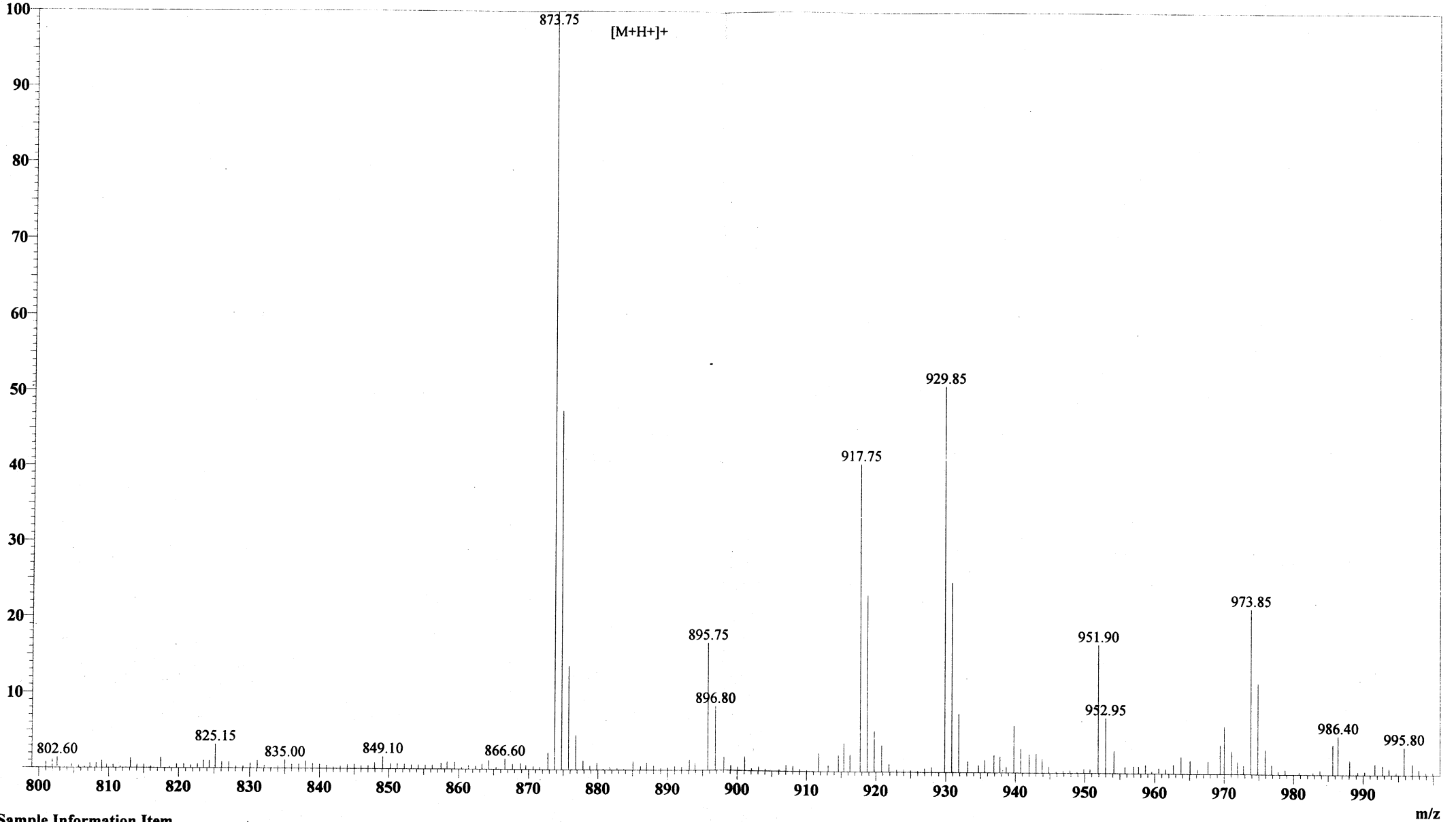


MS Spectrum

Positive



Sample Information Item

Date and Time : 2005-2-21 21:15:03  
User : FJS  
Sample : RP10698  
Inj. Volume : 1.000  
MW : 872.9

Cat. No.: RP10698

Lot No.: PY00104503

Probe: ESI  
Nebulizer Gas Flow: 1.5L/min  
CDL: -20.0v  
CDL Temp: 250°C  
Block Temp: 200°C

Probe bias: +4.5kv  
Detector: 1.5kv  
T. Flow: 0.2ml/min  
B. conc: 50%H2O/50%ACN