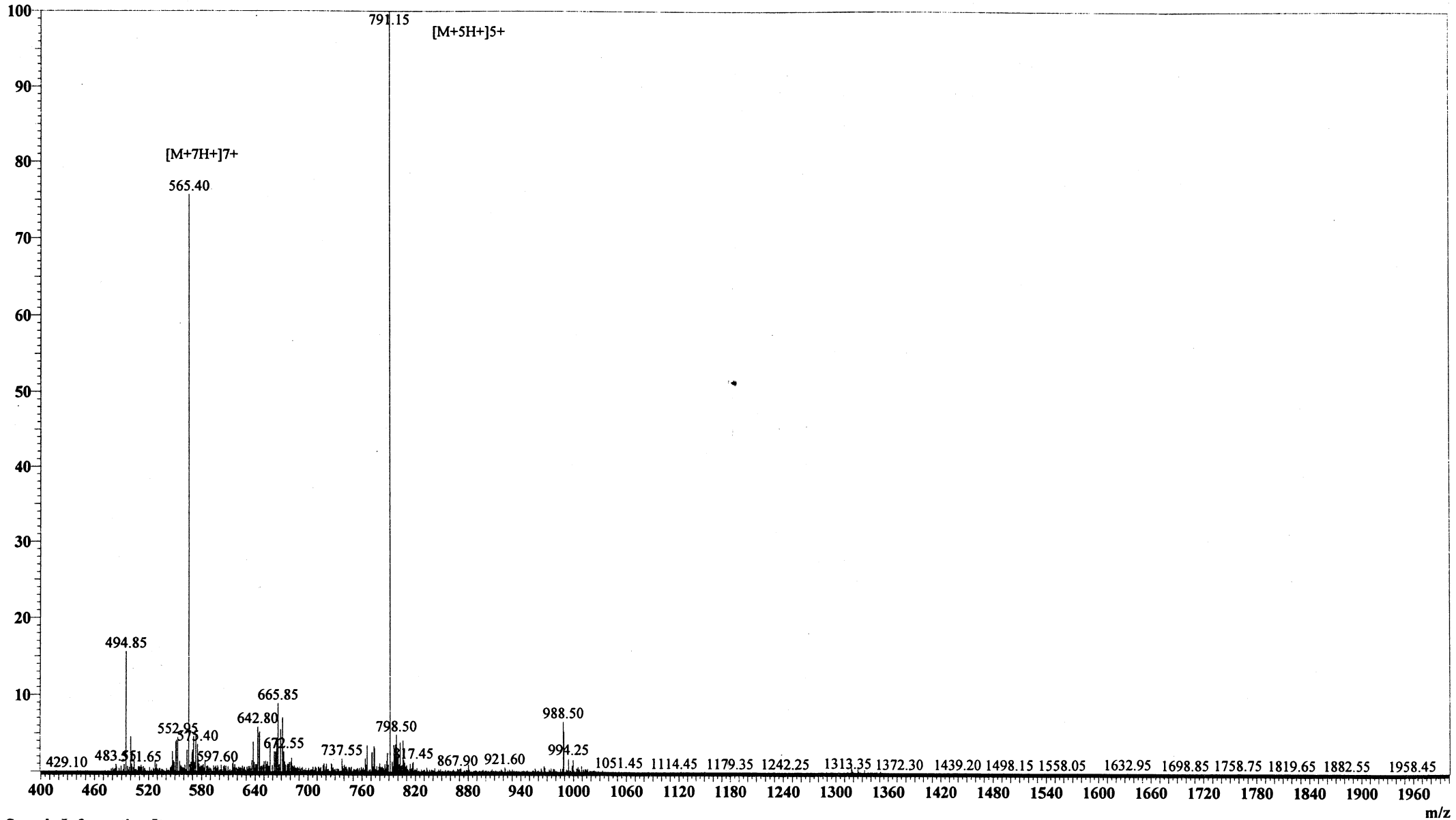


MS Spectrum

Positive



Sample Information Item

Date and Time : 2005-6-2 12:11:32  
User : FJS  
Sample : RP10702(VK-35)  
Inj. Volume : 1.000  
MW : 3950.58

Cat. No.: RP10702

Lot No.: PL00815506

Probe: ESI  
Nebulizer Gas Flow: 1.5L/min  
CDL: -20.0v  
CDL Temp: 250°C  
Block Temp: 200°C

Probe bias: +4.5kv  
Detector: 1.5kv  
T. Flow: 0.2ml/min  
B. conc: 50%H2O/50%ACN

m/z