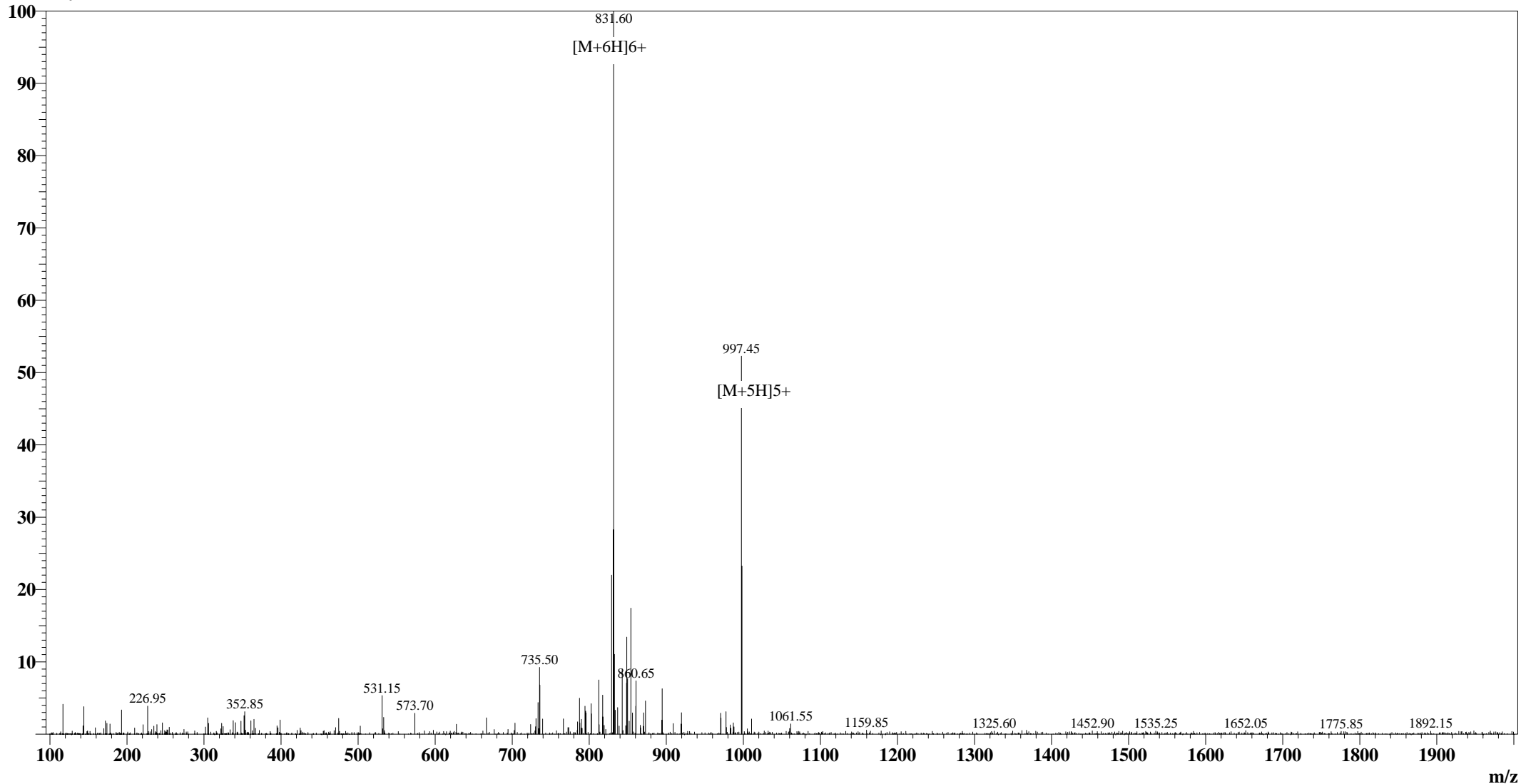


Positive

MS Spectrum

Intensity



Sample Information

User : Grace
Date Acquired : 2008-11-6 13:37:17
Sample Name : Gastric Inhibitory Peptide(GIP),human
Cat No. : RP10795
Injection Volum : 1.000µL
Theoretical MW : 4983.60
Observed MW : 4982.25

Interface

: ESI
Nebulizing Gas Flow : 1.50 L/min
CDL Temp : 250°C
CDL Volt : -25.0V
Block Temp : 200°C

Prerod Bias

: +4.5kv
Detector : 1.5kv
T.Flow : 0.2ml/min
B.conc : 50%H2O/50%MeOH