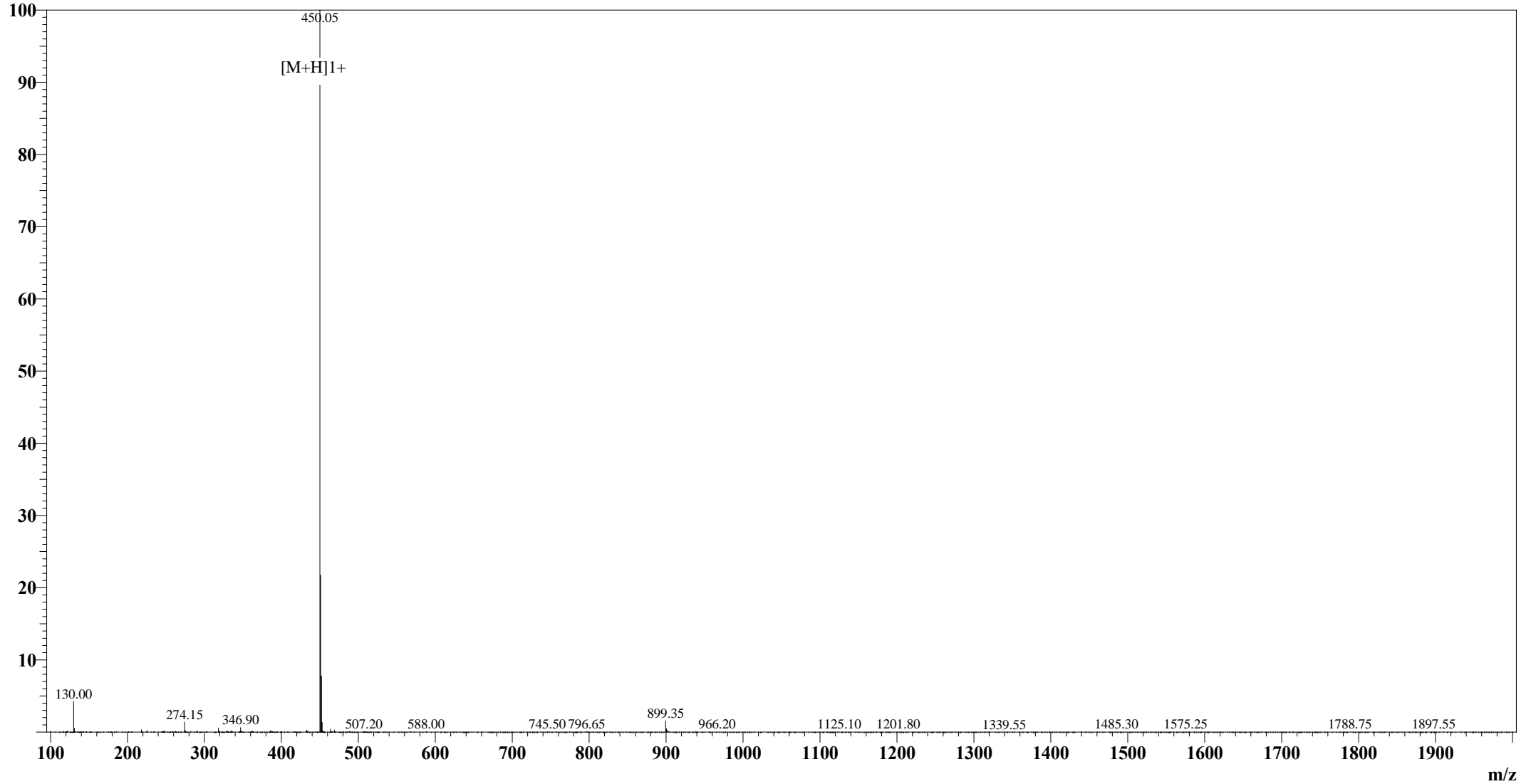


Positive

# MS Spectrum

Intensity



## Sample Information

User : Grace  
Date Acquired : 05/12/2009 16:53:01  
Sample Name : Arg-Gly-Asp-Cys  
Cat No. : RP10860  
Lot No. : CB01905  
Injection Volum : 1.000µL  
Theoretical MW : 448.50  
Observed MW : 449.05

Interface : ESI  
Nebulizing Gas Flow : 1.50 L/min  
CDL Temp : 250°C  
CDL Volt : -25.0V  
Block Temp : 200°C

Prerod Bias : +4.5kv  
Detector : 1.5kv  
T.Flow : 0.2ml/min  
B.conc : 50%H2O/50%MeOH