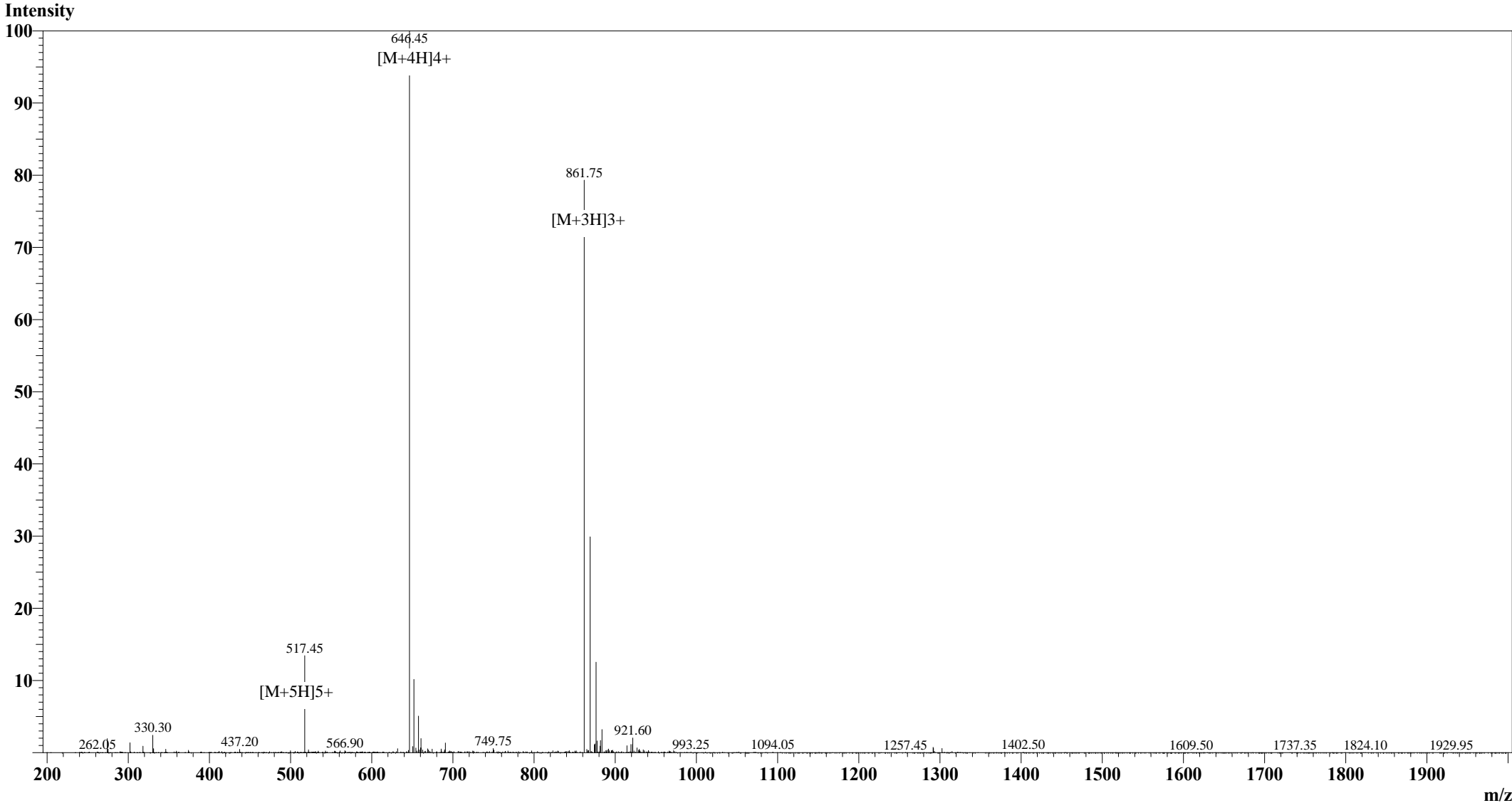


Positive MS Spectrum



Sample Information
User : Grace
Date Acquired : 10/20/2009 12:09:42
Sample Name : MOG
Cat No. : RP10245
Lot No. : CA06910
Injection Volum : 1.000µL
Theoretical MW : 2581.98
Observed MW : 2582.25

Interface : ESI
Nebulizing Gas Flow : 1.50 L/min
CDL Temp : 250°C
CDL Volt : -25.0V
Block Temp : 200°C

Prerod Bias : +4.5kv
Detector : 1.5kv
T.Flow : 0.2ml/min
B.conc : 50%H2O/50%MeOH