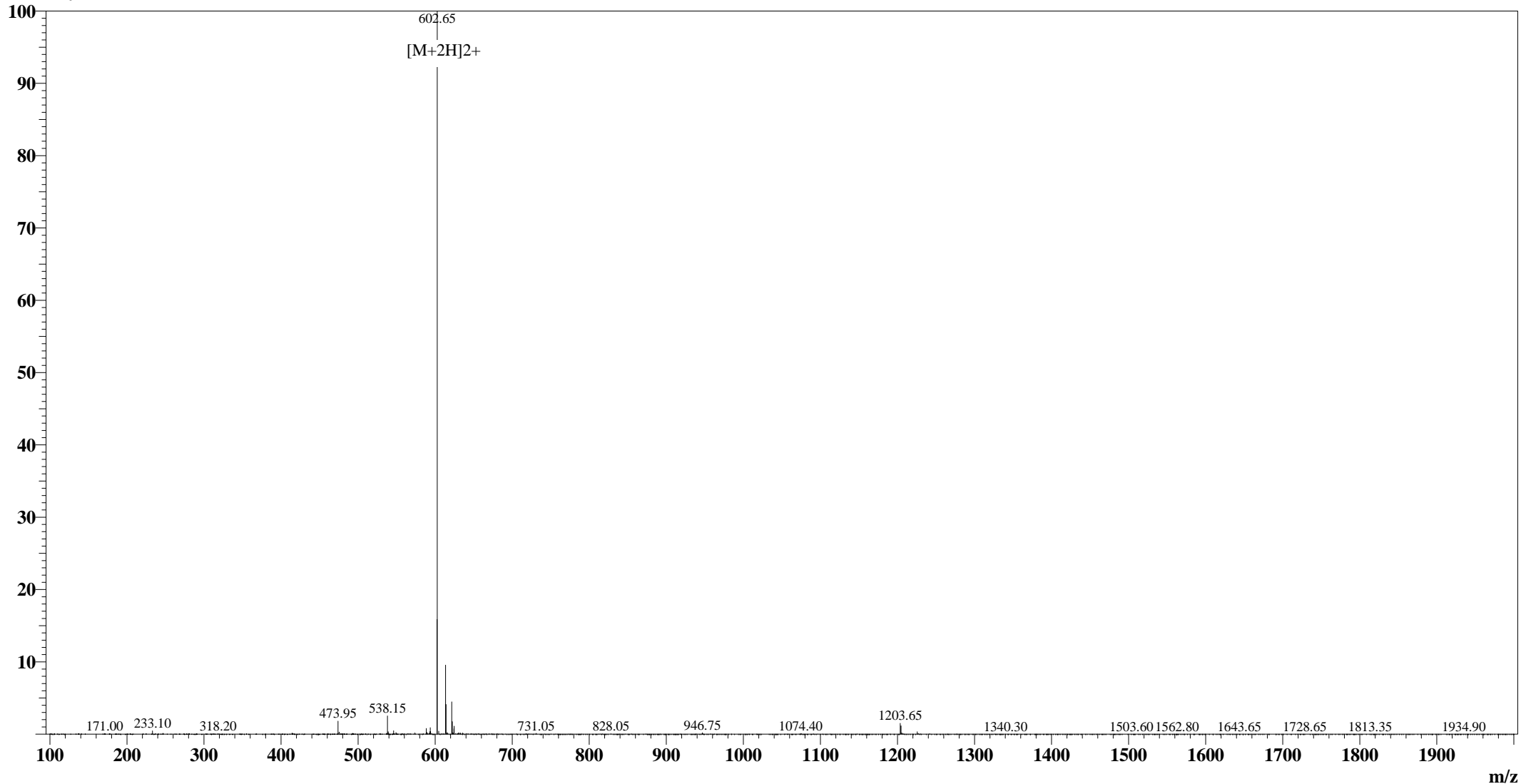


Positive

### MS Spectrum

Intensity



#### Sample Information

User :xu  
Date Acquired : 2008-4-22 15:33:38  
Sample Name :c-Myc Peptide  
Cat No. : RP11731  
Injection Volum : 1.000µL  
Theoretical MW :1203.30  
Observed MW :1203.30

Interface :ESI  
Nebulizing Gas Flow :1.50 L/min  
CDL Temp : 250°C  
CDL Volt : -25.0V  
Block Temp : 200°C

Prerod Bias :+4.5kv  
Detector :1.5kv  
T.Flow : 0.2ml/min  
B.conc : 50%H2O/50%MeOH