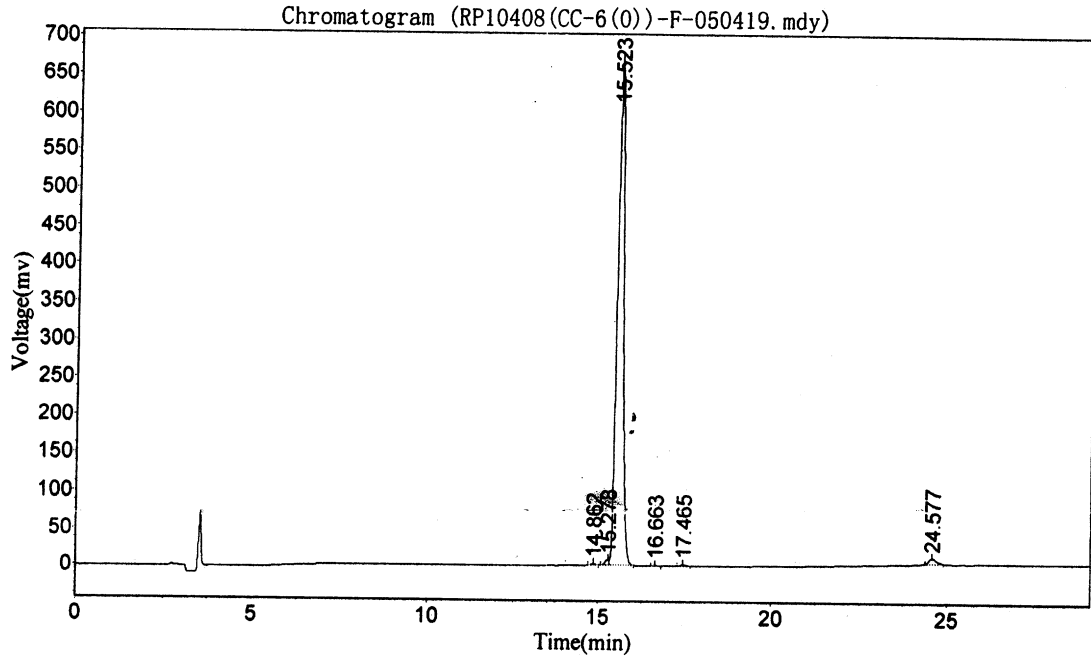


Sample Description:

Product Name : RP10408(CC-6(0))
 Column : 4.6*250mm, Kromasil C18 5um
 Solvent A : 0.1% trifluoroacetic in 100% acetonitrile
 Solvent B : 0.1% trifluoroacetic in 100% water
 Gradient
 A B
 0.01min 13% 87%
 25.0min 35% 65%
 25.1min 100% 0%
 30.0min STOP
 Flow rate : 1.0ml/min
 Wavelength : 220nm

Cat. No.: RP10408
 Lot No.: PJ00309510



Results

| Peak No. | Peak ID | Ret Time | Height | Area | Conc. |
|----------|---------|----------|------------|-------------|----------|
| 1 | | 14.862 | 1622.156 | 13945.404 | 0.1588 |
| 2 | | 15.278 | 7151.794 | 53800.223 | 0.6127 |
| 3 | | 15.523 | 668612.000 | 8585151.000 | 97.7666 |
| 4 | | 16.663 | 636.754 | 5794.648 | 0.0660 |
| 5 | | 17.465 | 2123.349 | 21662.104 | 0.2467 |
| 6 | | 24.577 | 7246.921 | 100917.742 | 1.1492 |
| Total | | | 687392.974 | 8781271.121 | 100.0000 |