

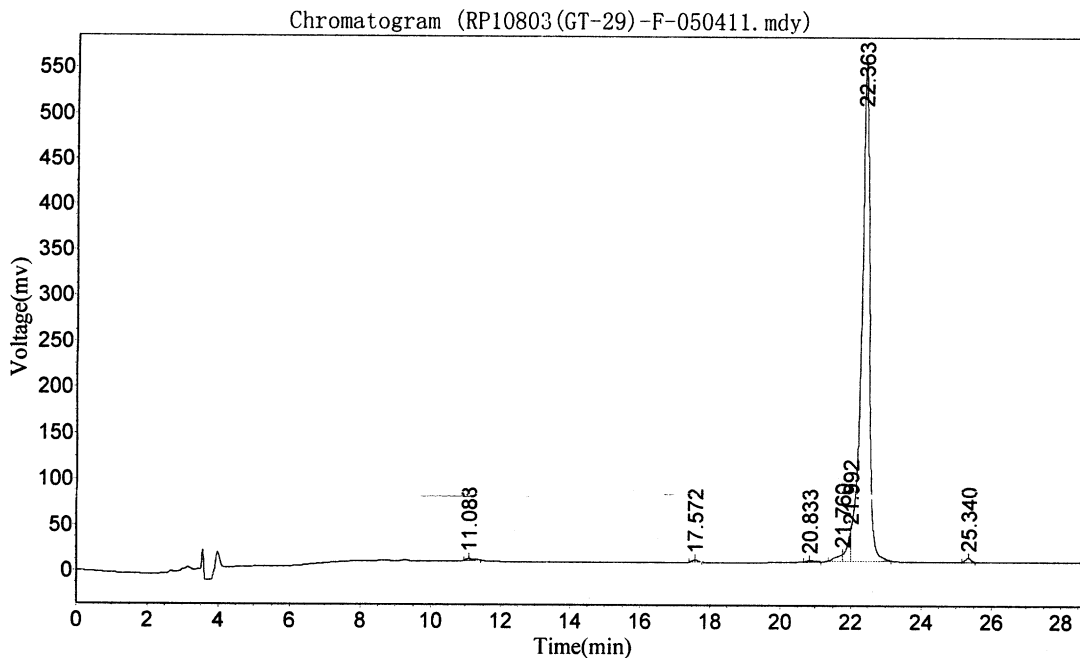
Sample Description:

Product Name : RP10803 (GT-29)  
 Column : 4.6\*250mm, Kromasil C18 5um  
 Solvent A : 0.1% trifluoroacetic in 100% acetonitrile  
 Solvent B : 0.1% trifluoroacetic in 100% water  
 Gradient

Cat. No.: RP10803  
 Lot No.: PJ00706506

	A	B
0.01min	21%	89%
25.0min	45%	55%
25.1min	100%	0%
30.0min	STOP	

Flow rate : 1.0ml/min  
 Wavelength : 220nm



**Results**

Peak No.	Peak ID	Ret Time	Height	Area	Conc.
1		11.088	1720.123	30254.348	0.3346
2		17.572	2524.232	30055.211	0.3324
3		20.833	1295.883	21482.410	0.2376
4		21.760	7196.191	86171.398	0.9531
5		21.992	32284.232	216065.766	2.3899
6		22.363	545718.625	8613000.000	95.2684
7		25.340	3925.619	43747.813	0.4839
<b>Total</b>			594664.905	9040776.945	100.0000