

Lambda DNA/*Hind* III Marker

Cat. No.: MM1212
Concentration: 83 ng/ μ l
Storage: -20°C
Version: 01/30/2008

Cat. No.	Format	Loading Size	Volume
MM1212-1	ready-to-use TM	100 lanes	600 μ l
MM1212-2	ready-to-use TM	500 lanes	3,000 μ l

Description

Lambda DNA/*Hind*III Marker is suitable for sizing and quantifying linear double-stranded DNA from 125 bp to 23.1 kb. The marker is prepared by completely digesting lambda DNA (cl857, *Sam*7) with *Hind*III. Lambda DNA/*Hind*III Marker is consisted of 8 fragments: 125, 564, 2,027, 2,322, 4,361*, 6,557, 9,416, 23,130*.

Recommended Loading

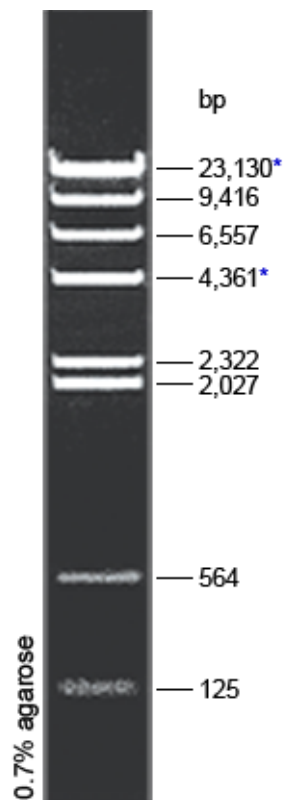
6 μ l per well

Storage Buffer

10 mM Tris-HCl (pH=7.5), 1 mM EDTA.

Note

The fragments marked by * may form additional bands, can be separated by heating 65 °C for 5 minutes and then immediately cooling on the ice for 3 minutes.



** For non-clinical research use only. **

Tel: 732-885-9188 Fax: 732-210-0262 E-Mail: info@genscript.com www.genscript.com