

Lambda DNA/*Eco*RI+*Hind* III Marker

Cat. No.: MM1302
Concentration: 400 ng/μl
Storage: -20°C
Version: 01/30/2008

Cat. No.	Format	Loading Size	Volume
MM1302	ready-to-use™	100 lanes	125 μl

Description

Lambda DNA/*Eco*RI+*Hind* III Marker is suitable for sizing linear double-stranded DNA from 125 bp to 21.2 kb. The marker was prepared by completely digesting lambda DNA (cl857, *Sam7*) with both *Eco*RI and *Hind* III. Lambda DNA/*Eco*RI+*Hind*III Marker is consisted of 12 fragments: 125, 564, 831, 947, 1375, 1584, 1904, 2027, 3530*, 4268, 4973, 5248, 21226* bp.

Recommended Loading

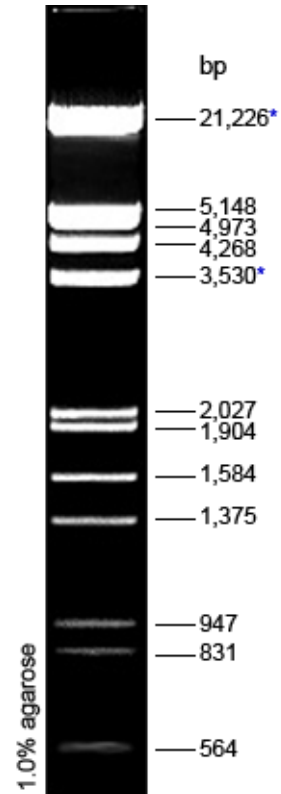
1.25 μl per well.

Storage Buffer

10 mM Tris-HCl (pH=7.5), 1 mM EDTA. Supplied with 6X Loading dye solution.

Note

The fragments marked by * may form additional bands, can be separated by heating 65 °C for 5 minutes and then immediately cooling on the ice for 3 minutes.



** For non-clinical research use only. **

Tel: 732-885-9188 Fax: 732-210-0262 E-Mail: info@genscript.com www.genscript.com