

## Smart Protein Standard (Middle-Range) (Cat. No. MM0900)

**Size:** 100 Lanes.

**Reconstitution:** Reconstitute with 500  $\mu$ l of ddH<sub>2</sub>O before use, 5  $\mu$ l of the solution is recommended for each lane of a mini-gel. When reconstituted with 500  $\mu$ l of ddH<sub>2</sub>O, 5  $\mu$ l/lane is equivalent to 250 ng/band.

**Description:** The Smart Protein Standard is a lyophilized mixture of 6 highly purified recombinant proteins ranging from 15 to 100 kDa (15, 25, 32, 50, 75, 100 kDa). It migrates into six sharp and clear bands when separated by SDS-polyacrylamide gelelectrophoresis (PAGE).

**Concentration:** 25  $\mu$ g of each protein in 60 mM Tris-HCl (pH6.8, 25°C), 0.4% (w/v) SDS, 10 mM DTT, 0.01% (w/v) bromophenol blue and 6% sucrose.

**Storage:** Store at -20°C or below. After reconstitution, aliquot and store at -20°C or below.

**Example:** The reconstituted Smart Protein Standard was loaded on a 12% SDS-PAGE gel, the results were shown in the figure to the right.

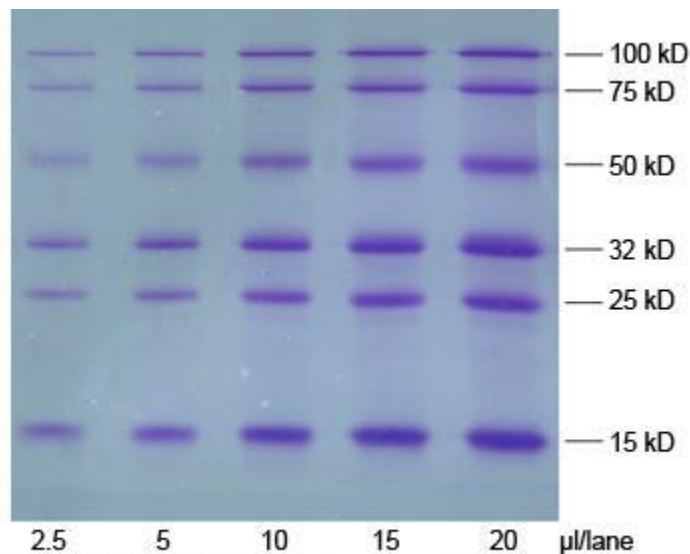


Fig. 1. 12% SDS-PAGE of reconstituted protein standard