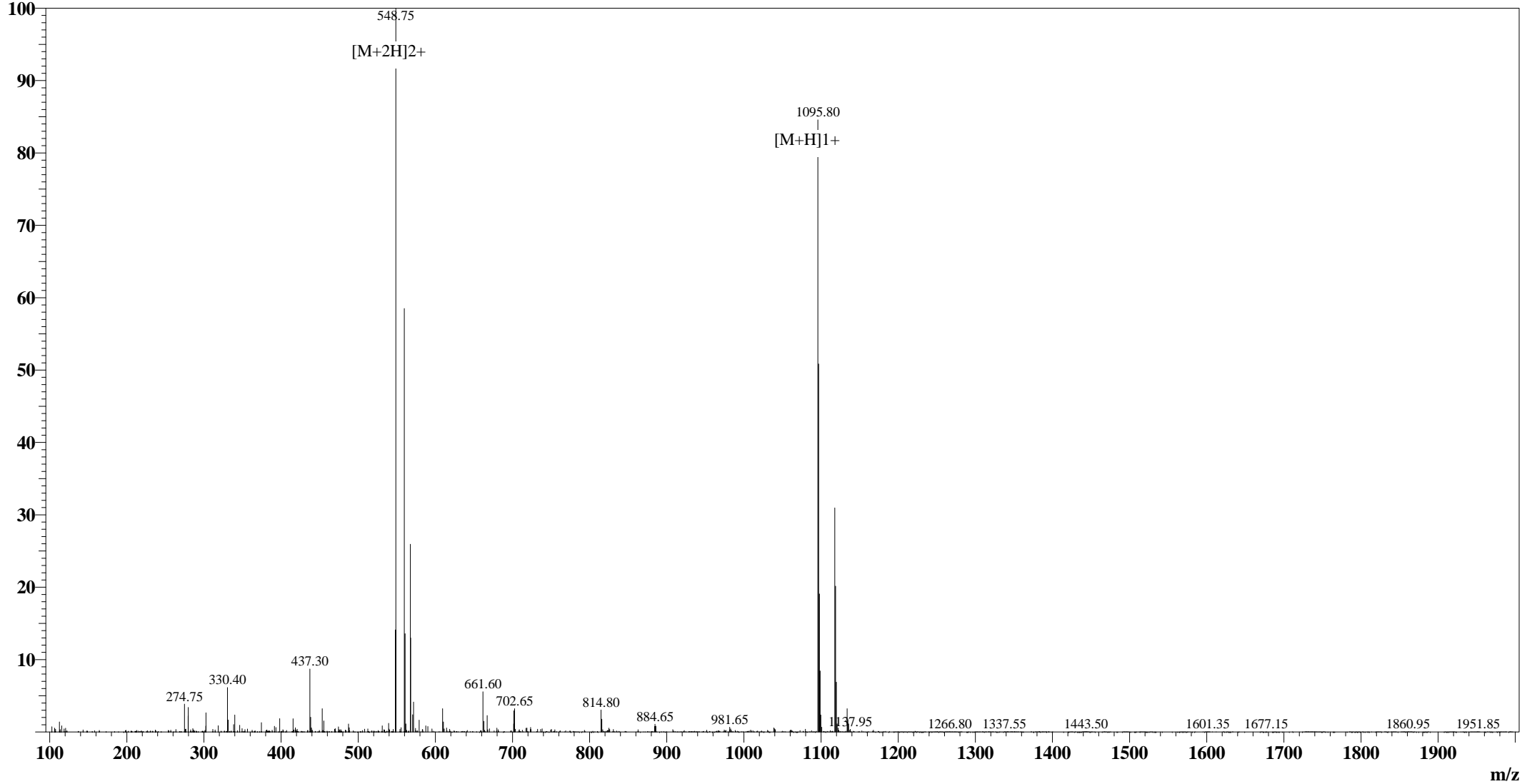


Positive

### MS Spectrum

Intensity



#### Sample Information

User :xu  
Date Acquired : 2007-12-3 19:56:50  
Sample Name :Glycoprotein(276-286)  
Cat No. :RP19983  
Injection Volum : 1.000µL  
Theoretical MW :1095.19  
Observed MW :1094.80

Interface :ESI  
Nebulizing Gas Flow :1.50 L/min  
CDL Temp : 250°C  
CDL Volt : -25.0V  
Block Temp : 200°C

Prerod Bias :+4.5kv  
Detector :1.5kv  
T.Flow : 0.2ml/min  
B.conc : 50%H2O/50%MeOH