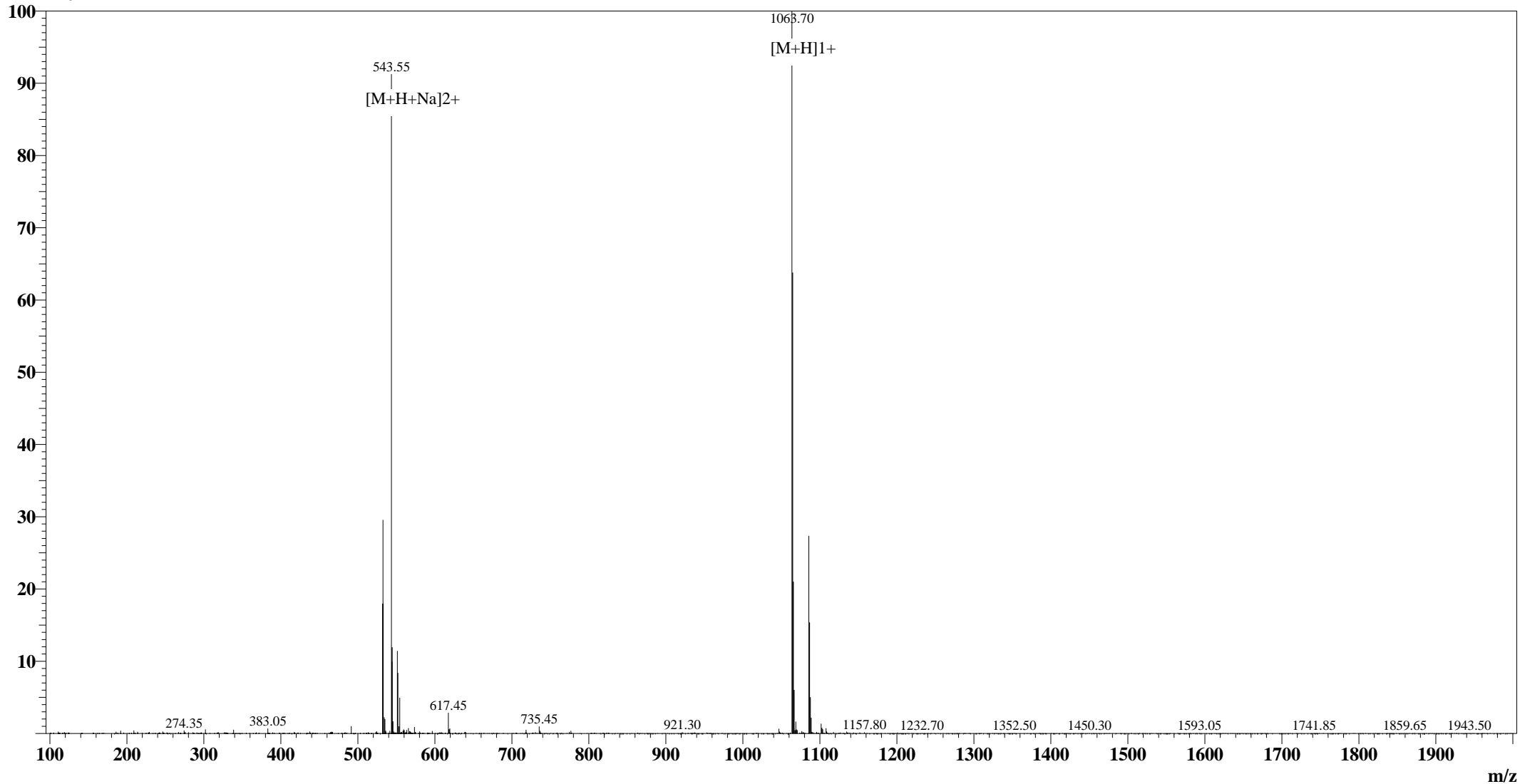


Positive

MS Spectrum

Intensity



Sample Information

User :xu
Date Acquired : 2008-4-18 9:23:06
Sample Name :QL9
Cat No. : RP20092
Injection Volum : 1.000µL
Theoretical MW :1063.23
Observed MW :1062.70

Interface :ESI
Nebulizing Gas Flow :1.50 L/min
CDL Temp : 250°C
CDL Volt : -25.0V
Block Temp : 200°C

Prerod Bias :+4.5kv
Detector :1.5kv
T.Flow : 0.2ml/min
B.conc : 50%H2O/50%MeOH