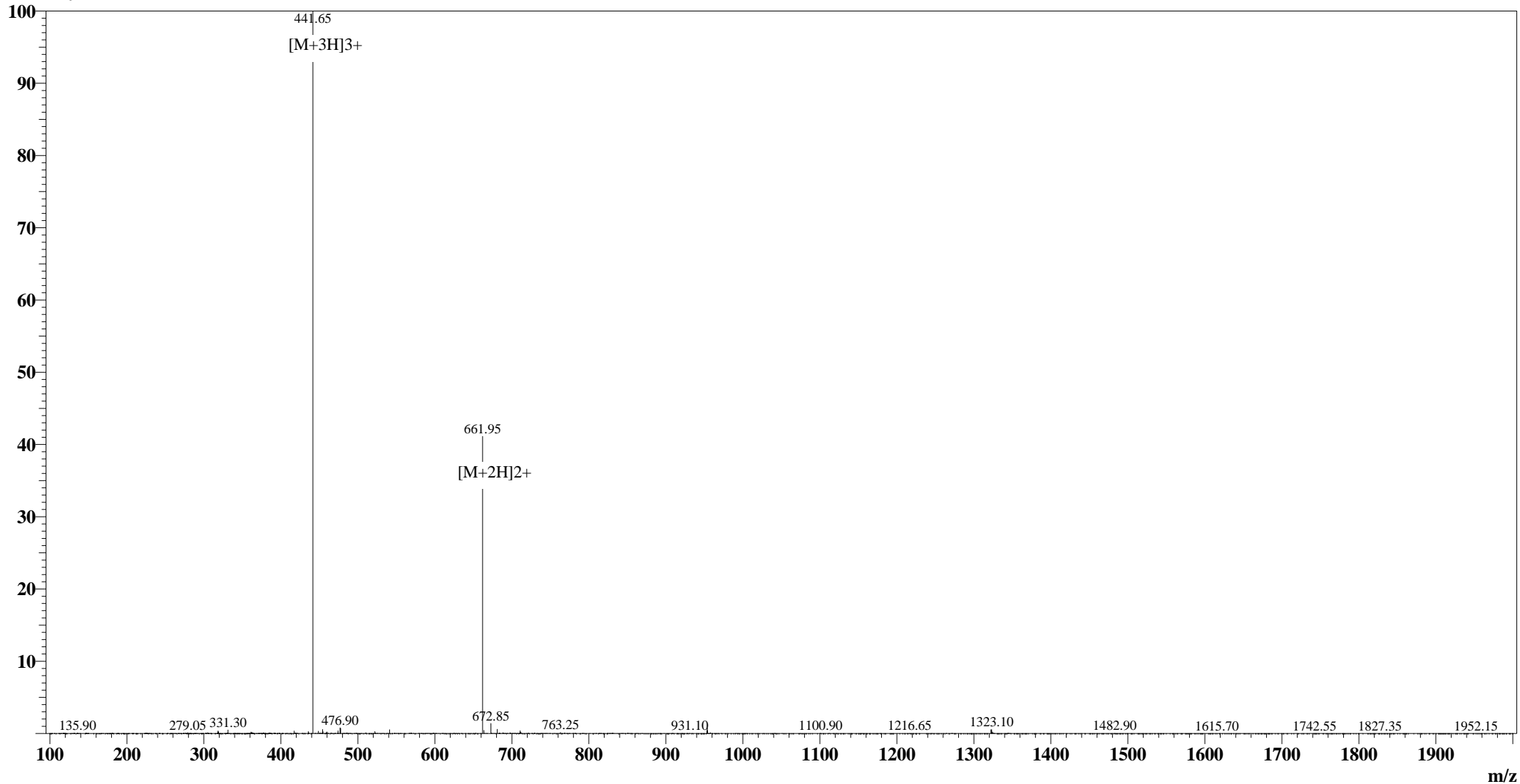


Positive

MS Spectrum

Intensity



Sample Information

User :xu
Date Acquired : 2008-5-13 10:29:16
Sample Name :KLKLLLLLKLK-NH2
Cat No. :RP20089
Injection Volum : 1.000µL
Theoretical MW :1321.86
Observed MW :1321.90

Interface :ESI
Nebulizing Gas Flow :1.50 L/min
CDL Temp : 250°C
CDL Volt : -25.0V
Block Temp : 200°C

Prerod Bias :+4.5kv
Detector :1.5kv
T.Flow : 0.2ml/min
B.conc : 50%H2O/50%MeOH