

Sample Name : Bactenecin,bovine
 Cat. No. : RP11235

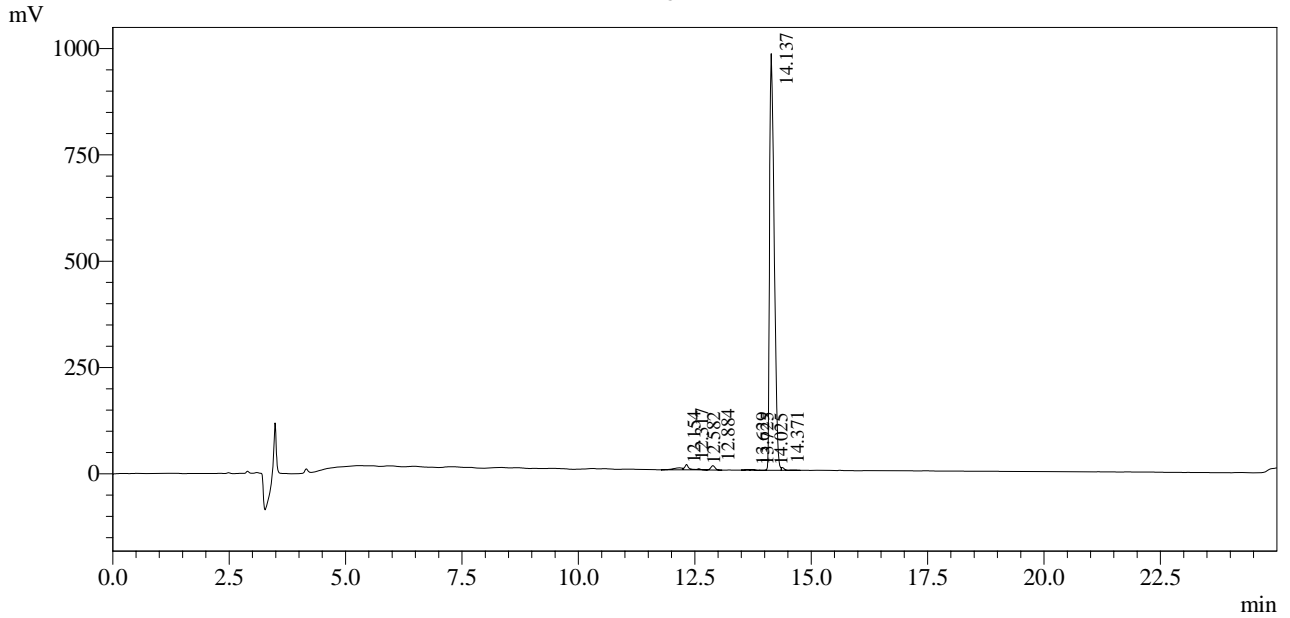
Pump A : 0.065% trifluoroacetic in 100% water
 Pump B : 0.05% trifluoroacetic in 100% acetonitrile
 Total Flow : 1 ml / min
 Wavelength : 214 nm

| Time | Unit | Command | Value | Comment |
|-------|------------|--------------|-------|---------|
| 0.01 | Pumps | Pump B Conc. | 5 | |
| 25.00 | Pumps | Pump B Conc. | 65 | |
| 25.01 | Pumps | Pump B Conc. | 95 | |
| 35.00 | Pumps | Pump B Conc. | 95 | |
| 35.01 | Pumps | Pump B Conc. | 5 | |
| 43.00 | Pumps | Pump B Conc. | 5 | |
| 43.01 | Controller | Stop | | |

<Detector A>

Column : X Bridge 4.6 x 250mm

Chromatogram



1 Det.A Ch1 / 214nm

Peak Table

Detector A Ch1 214nm

| Peak# | Ret. Time | Area | Height | Area % |
|-------|-----------|---------|---------|---------|
| 1 | 12.154 | 66361 | 4815 | 0.939 |
| 2 | 12.317 | 75399 | 12595 | 1.067 |
| 3 | 12.582 | 13313 | 2620 | 0.188 |
| 4 | 12.884 | 63875 | 10209 | 0.904 |
| 5 | 13.629 | 12737 | 1876 | 0.180 |
| 6 | 13.725 | 12372 | 1981 | 0.175 |
| 7 | 14.025 | 2279 | 696 | 0.032 |
| 8 | 14.137 | 6789074 | 979759 | 96.053 |
| 9 | 14.371 | 32604 | 6530 | 0.461 |
| Total | | 7068013 | 1021081 | 100.000 |