

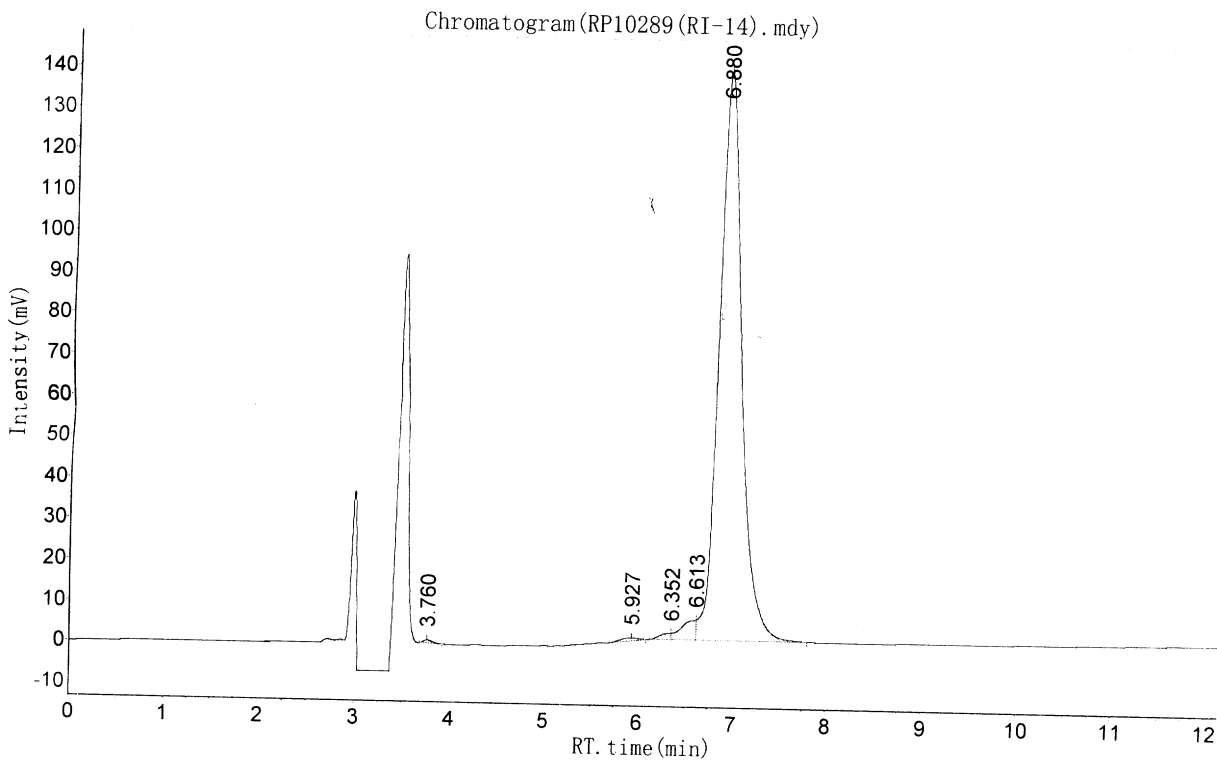
Summary:

Column : 250\*4.6mm, Hypersil ODS-2  
 Solvent A : 0.1% TFA in 100% water  
 Solvent B : 0.1% TFA in 100% acetonitrile  
 Gradient :           A           B  
           0.1min 75           25  
           25 min 50           50  
           25.01min 0           100  
           30 min 0           100

RP10289

PL00109508

Flow rate : 1.0ml/min



RESULTS

Peak No.	Peak ID	Ret Time	Height	Area	Conc
1		3.760	774.634	4848.568	0.2041
2		5.927	702.152	9360.503	0.3941
3		6.352	1564.212	12882.030	0.5423
4		6.613	4966.467	53909.688	2.2696
5		6.880	138162.391	2294244.000	96.5898
TOTAL			146169.856	2375244.789	100.0000