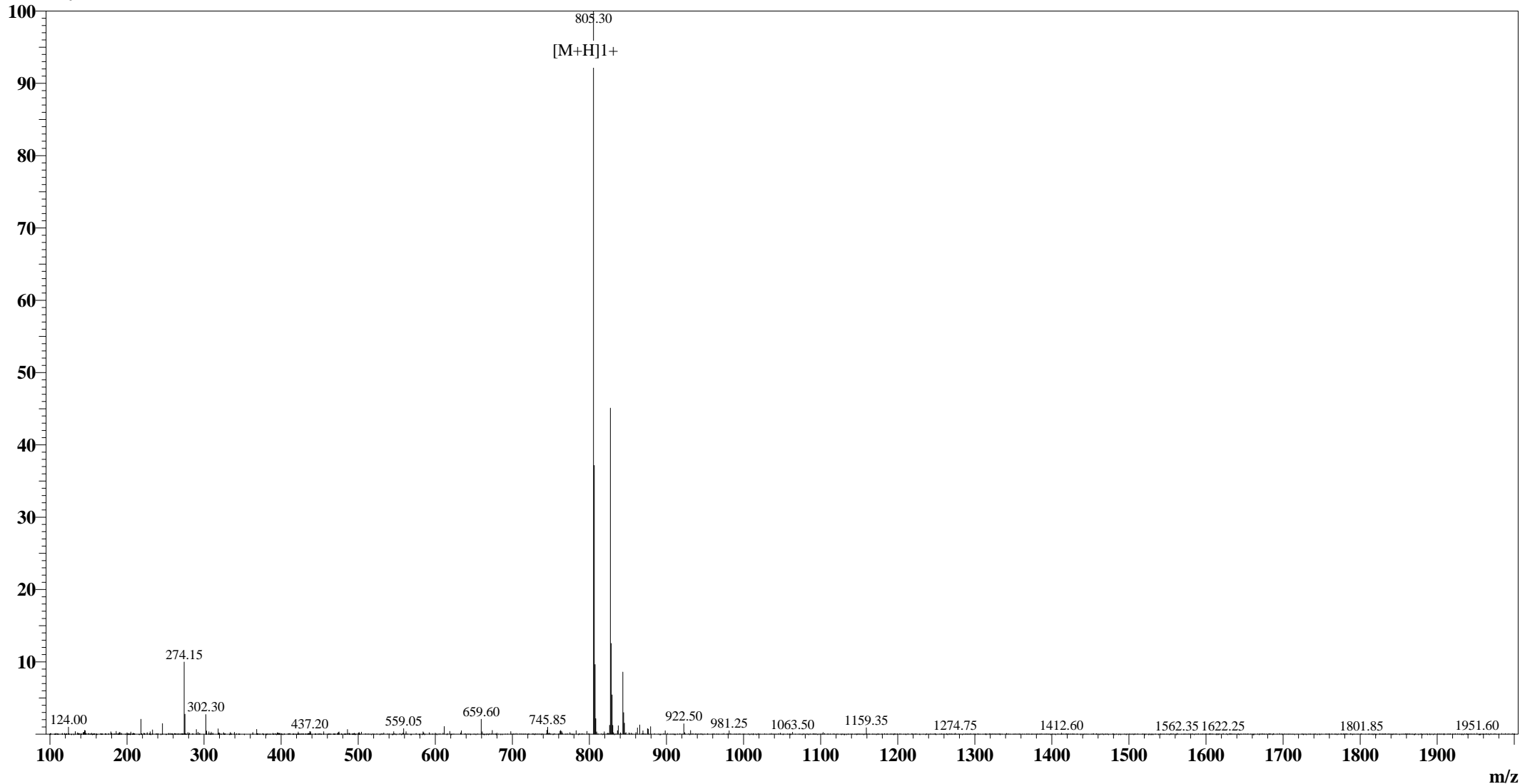


Positive

MS Spectrum

Intensity



Sample Information

User : Grace
Date Acquired : 2008-11-4 16:12:11
Sample Name : EGFR(988-993)(Phospho-Tyr5)
Cat No. : RP20108
Injection Volum : 1.000µL
Theoretical MW : 804.70
Observed MW : 804.30

Interface : ESI
Nebulizing Gas Flow : 1.50 L/min
CDL Temp : 250°C
CDL Volt : -25.0V
Block Temp : 200°C

Prerod Bias : +4.5kv
Detector : 1.5kv
T.Flow : 0.2ml/min
B.conc : 50%H2O/50%MeOH