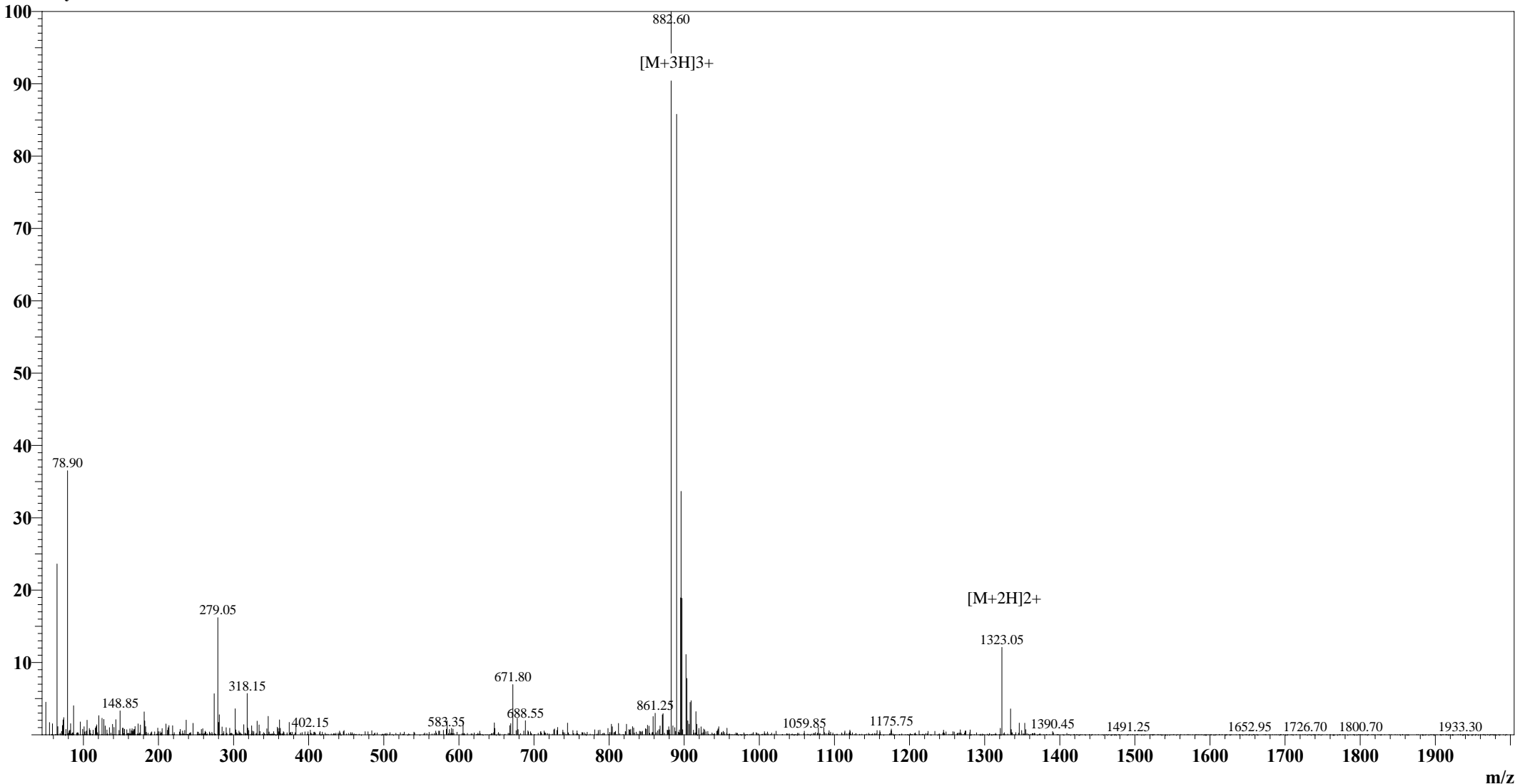


Positive

MS Spectrum

Intensity



Sample Information

User : Grace
Date Acquired : 03/14/2009 16:46:37
Sample Name : Colivelin
Cat No. : RP20167
Lot No. : CA01903
Injection Volum : 1.000µL
Theoretical MW : 2645.10
Observed MW : 2644.10

Interface : ESI
Nebulizing Gas Flow : 1.50 L/min
CDL Temp : 250°C
CDL Volt : -25.0V
Block Temp : 200°C

Prerod Bias : +4.5kv
Detector : 1.5kv
T.Flow : 0.2ml/min
B.conc : 50%H2O/50%MeOH