

Sample Name : Glucagon(1-29),Human,Hydrochloride Salt
 Cat. No. : RP10772
 Lot. No. : CC03904

Pump A : 0.065% trifluoroacetic in 100% water
 Pump B : 0.05% trifluoroacetic in 100% acetonitrile
 Total Flow : 1 ml / min
 Wavelength : 214 nm

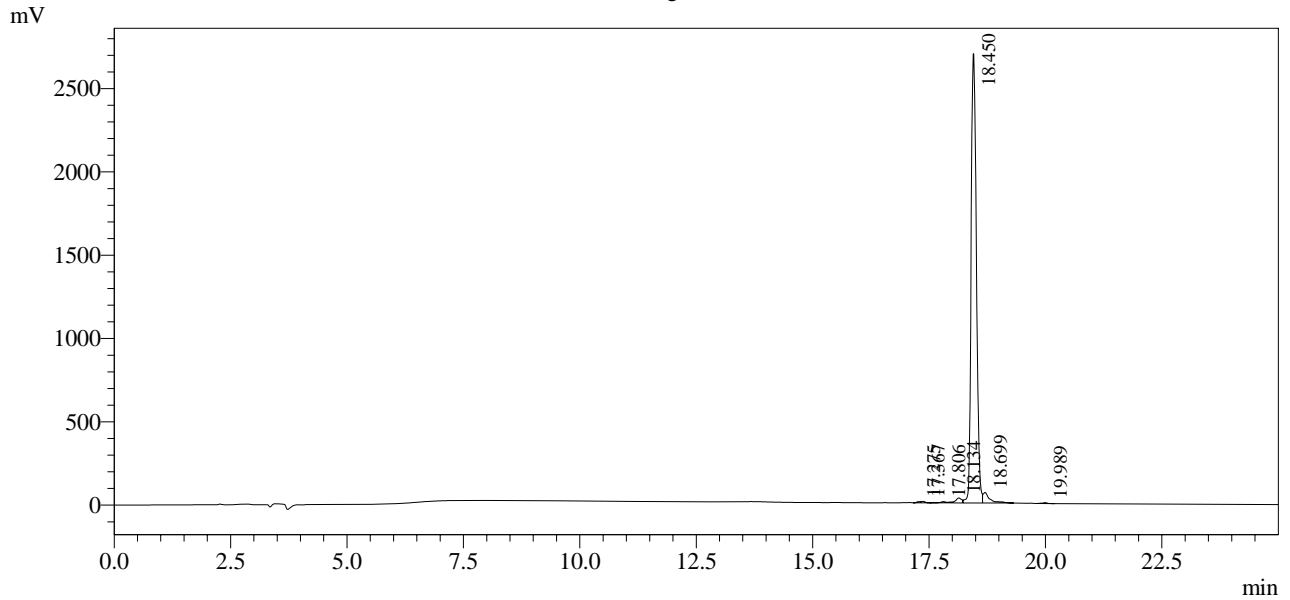
Time	Unit	Command	Value	Comment
0.01	Pumps	Pump B Conc.	5	
25.00	Pumps	Pump B Conc.	65	
25.01	Pumps	Pump B Conc.	95	
35.00	Pumps	Pump B Conc.	95	
35.01	Pumps	Pump B Conc.	5	
45.00	Pumps	Pump B Conc.	5	
45.01	Controller	Stop		

<<Column Performance>>

<Detector A>

Column : Alltima™ C18 4.6 x 250 mm

Chromatogram



1 Det.A Ch1 / 214nm

Peak Table

Detector A Ch1 214nm

Peak#	Ret. Time	Area	Height	Area %
1	17.275	40210	7582	0.180
2	17.367	53236	9193	0.238
3	17.806	59915	7792	0.268
4	18.134	288256	29612	1.289
5	18.450	21253867	2696162	95.039
6	18.699	629837	63004	2.816
7	19.989	38027	5601	0.170
Total		22363349	2818945	100.000