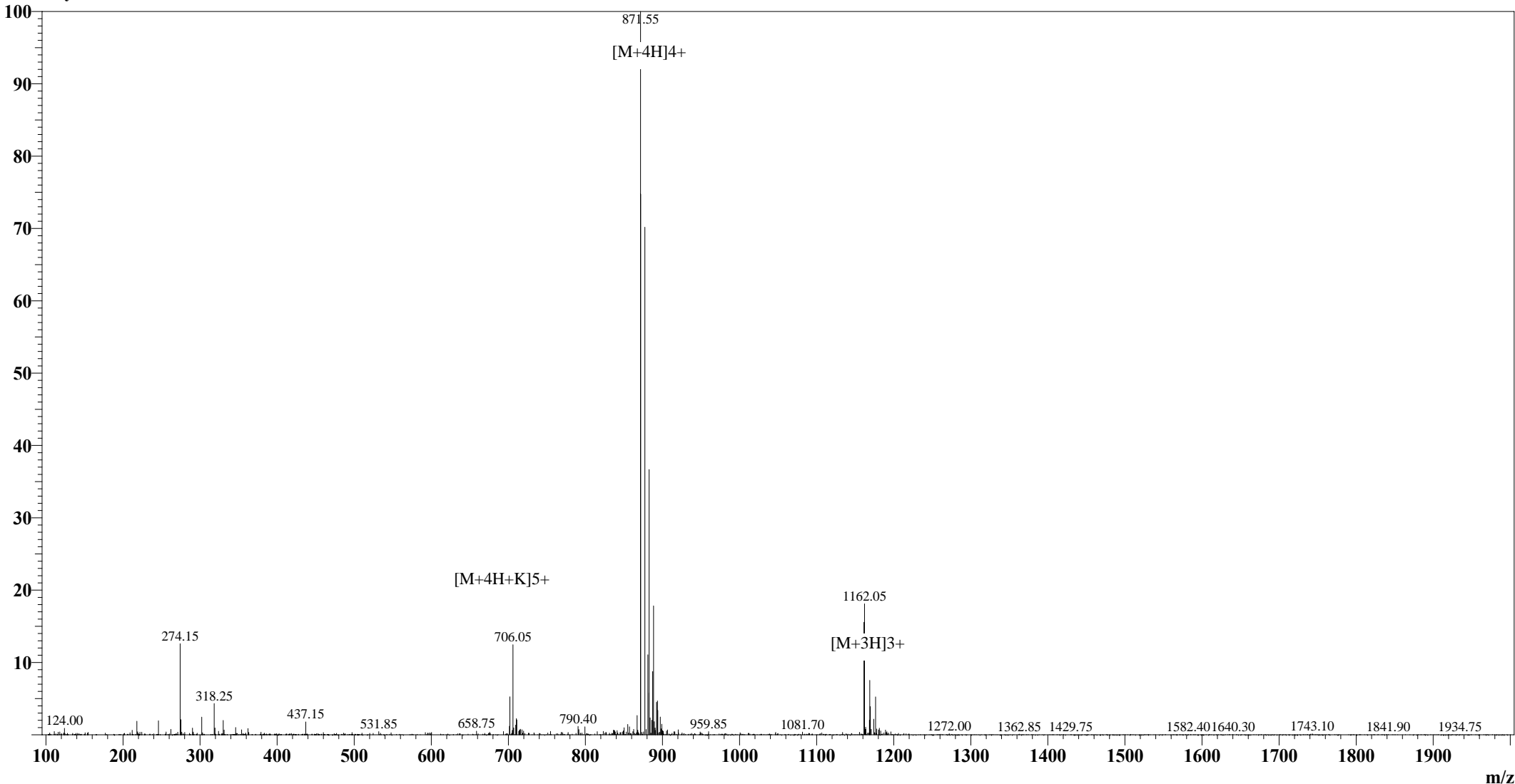


Positive

MS Spectrum

Intensity



[M+4H+K]⁵⁺

[M+3H]³⁺

Sample Information

User : Grace
Date Acquired : 04/23/2009 10:46:36
Sample Name : Glucagon(1-29), Human, Hydrochloride Salt
Cat No. : RP10772
Lot No. : CC03904
Injection Volum : 1.000µL
Theoretical MW : 3482.80
Observed MW : 3483.15

Interface : ESI
Nebulizing Gas Flow : 1.50 L/min
CDL Temp : 250°C
CDL Volt : -25.0V
Block Temp : 200°C

Prerod Bias : +4.5kv
Detector : 1.5kv
T.Flow : 0.2ml/min
B.conc : 50%H2O/50%MeOH