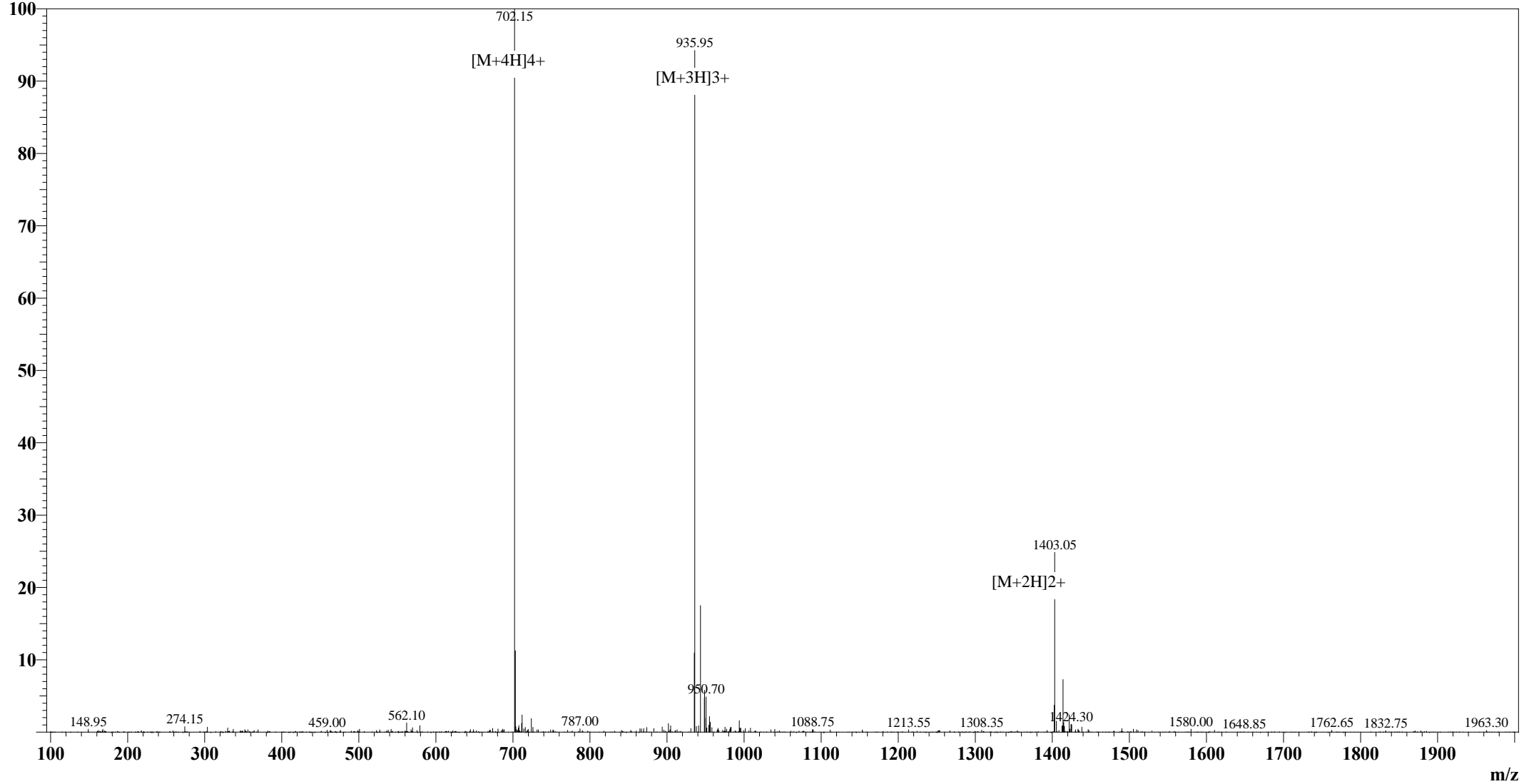


Positive

### MS Spectrum

Intensity



#### Sample Information

User : Grace  
Date Acquired : 06/04/2009 15:24:26  
Sample Name : Gastrin Releasing Peptide, porcine  
Cat No. : RP10792  
Lot No. : CD02906  
Injection Volum : 1.000µL  
Theoretical MW : 2805.40  
Observed MW : 2804.85

Interface : ESI  
Nebulizing Gas Flow : 1.50 L/min  
CDL Temp : 250°C  
CDL Volt : -25.0V  
Block Temp : 200°C

Prerod Bias : +4.5kv  
Detector : 1.5kv  
T.Flow : 0.2ml/min  
B.conc : 50%H2O/50%MeOH