

Epitope Tag Antibodies

Tag You're It!



www.GenScript.com

GenScript USA Inc.
860 Centennial Ave.
Piscataway, NJ 08854 USA
Toll-Free: 1-877-436-7274
Fax: 1-732-210-0262
1-732-885-5878

- Epitope Tag Antibodies
- THE™ Elite Antibodies

Epitope Tag Antibodies

GenScript offers the most comprehensive set of antibodies against Epitope/Protein Fusion tags. The most commonly used epitope tags include His tag (6-Histidine), HA tag (Hemagglutinin), cMyc tag, GST tag, and DYKDDDDK(Flag) tag.

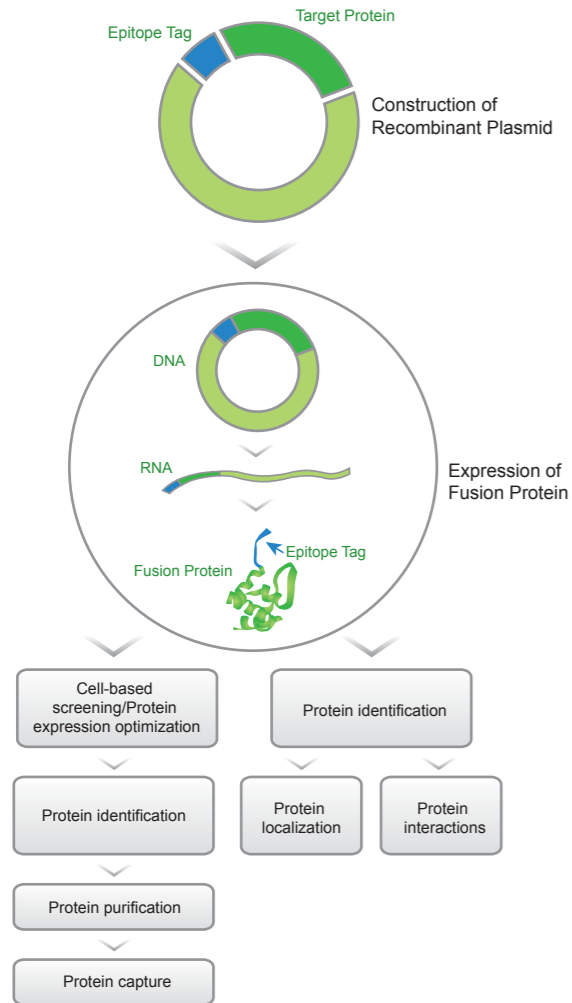
The following table shows the amino acid arrangements that are often used as epitope tags:

Common Epitope Tags

Name	Amino Acid Quantity	Amino Acid Sequence
c-Myc	10	EQKLISEEDL
Flag	8	DYKDDDDK
E2	12	GVSSTSSDFRDR
HA	9	YPYDVPDYA
HAT	19	KDHLIHNVHKEFHAAHANK
His	6	HHHHHH
HSV	11	QPELAPEDPED
KT3	11	KPPTPPPEPET
Strep II	9	NWSHPQFEK
Protein C	13	CEDQVDPRLIDGK
RFP	15	VNGHEFEIEGEGEGR
S1	9	NANNPDWDF
S	15	KETAAAKFERQHMS
tag-100	12	EETARFQPGYRS
TAP	21	CSSGALDYDIPTTASENLYFQ
Universal	7	HTTPHH
V5	14	GKPIPPLLGLDST
VSV-G	11	YTDIEMNRLGK

Product Overview

Tag	Product	Conjugation	Applications	Cat. No.	Size
AU1 Tag	AU1-tag Antibody, pAb, Rabbit	—	ELISA, WB	A00628-40	40 µg
				A00628-100	100 µg
				A00628-200	200 µg (5x40 µg)
Avi Tag	Avi-tag Antibody, mAb, Mouse	—	ELISA, WB, IF, FACS	A01738-40	40 µg
				A01738-100	100 µg
				A01738-200	200 µg (5x40 µg)
	Avi-tag Antibody, pAb, Rabbit	—	ELISA, WB	A00674-40	40 µg
				A00674-100	100 µg
				A00674-200	200 µg (5x40 µg)
B Tag	B-tag Antibody, pAb, Rabbit	—	ELISA, WB	A00638-40	40 µg
				A00638-100	100 µg
				A00638-200	200 µg (5x40 µg)
CBP Tag	CBP-tag Antibody, pAb, Rabbit	—	ELISA, WB	A00635-40	40 µg
				A00635-100	100 µg
				A00635-200	200 µg (5x40 µg)



Epitope tags are short peptide sequences which are generally composed of 10-15 amino acids and are designed to create a molecular handle for your protein. Epitope tags can be placed anywhere within your protein, but typically they are placed on either the N-terminus or C-terminus to minimize tertiary structure disruptions that may alter protein function. Epitope tags are widely used in protein expression, screening, purification and detection. The most commonly used epitope tags include His, GST, Flag, cMyc, HA, GFP, and Strep II.

Epitope tagging is a powerful tool in protein research providing universal methods for purification and detection. GenScript offers a wide range of epitope tag-specific antibodies for a variety of immunological applications, such as Western blot analysis, immunoprecipitation, immunochemistry, and affinity purification. For more information, please visit our webpage at http://www.genscript.com/epitope_antibody.html.

Fig.1 Epitope Tags in Protein Research

Tag	Product	Conjugation	Applications	Cat. No.	Size
cGFP Tag	cGFP-tag Antibody, mAb, Mouse	—	ELISA, WB	A00185-40	40 µg
				A00185-100	100 µg
				A00185-200	200 µg (5x40 µg)
c-Myc Tag	c-Myc-tag Antibody, pAb, Rabbit	—	ELISA, WB	A00172-40	40 µg
				A00172-100	100 µg
				A00172-200	200 µg (5x40 µg)
	c-Myc-tag Antibody [HRP], pAb, Rabbit	HRP	ELISA, WB	A00173-40	40 µg
				A00173-100	100 µg
	DDDDK Tag	DDDDK-tag Antibody, pAb, Rabbit	—	ELISA, WB	A00676-40
A00676-100					100 µg
A00676-200					200 µg (5x40 µg)
Flag Tag	DYKDDDDK-tag Antibody, pAb, Rabbit	—	ELISA, WB	A00170-40	40 µg
				A00170-100	100 µg
				A00170-200	200 µg (5x40 µg)
E2 Tag	E2-tag Antibody, pAb, Rabbit	—	ELISA, WB	A00630-40	40 µg
				A00630-100	100 µg
				A00630-200	200 µg (5x40 µg)
E Tag	E-tag Antibody, pAb, Rabbit	—	ELISA, WB	A00631-40	40 µg
				A00631-100	100 µg
				A00631-200	200 µg (5x40 µg)
	E-tag Antibody [HRP], pAb, Rabbit	HRP	ELISA, WB	A00874-40	40 µg
A00874-100				100 µg	
GFP Tag	GFP-tag Antibody, pAb, Goat	—	WB, IP	A01703-40	40 µg
				A01703-100	100 µg
				A01703-200	200 µg (5x40 µg)
	GFP-tag Antibody, pAb, Rabbit	—	ELISA, WB, IP	A01388-40	40 µg
				A01388-100	100 µg
				A01694-40	40 µg
	GFP-tag Antibody, pAb, Chicken	—	WB, IP	A01694-100	100 µg
				A01694-200	200 µg (5x40 µg)
				A00627-40	40 µg
Glu-Glu Tag	Glu-Glu-tag Antibody, pAb, Rabbit	—	ELISA, WB	A00627-100	100 µg
				A00627-200	200 µg (5x40 µg)
				A01379-100	100 µg
GST Tag	GST-tag Antibody, pAb, Goat	—	ELISA, WB	A00097-100	100 µg
				A01380-40	40 µg
	GST-tag Antibody [HRP], pAb, Goat	HRP	ELISA, WB	A01380-100	100 µg
				A00130-40	40 µg
	GST-tag Antibody [HRP], pAb, Rabbit	HRP	ELISA, WB	A00130-100	100 µg
				A00130-200	200 µg (5x40 µg)
				A00202-40	40 µg
	GST-tag Antibody [Biotin], pAb, Rabbit	Biotin	ELISA, WB	A00202-100	100 µg
				A00202-200	200 µg (5x40 µg)
A00168-40				40 µg	
HA Tag	HA-tag Antibody, pAb, Goat	—	ELISA, WB, IF, IP	A00168-100	100 µg
				A00168-200	200 µg (5x40 µg)

Tag	Product	Conjugation	Applications	Cat. No.	Size
HA Tag	HA-tag Antibody [HRP], pAb, Goat	HRP	ELISA, WB	A00169-40	40 µg
				A00169-100	100 µg
				A00169-200	200 µg (5x40 µg)
	HA-tag Antibody [Biotin], pAb, Goat	Biotin	ELISA, WB	A00203-40	40 µg
				A00203-100	100 µg
				A00203-200	200 µg (5x40 µg)
HAT Tag	HAT-tag Antibody, pAb, Rabbit	—	ELISA, WB	A00636-40	40 µg
				A00636-100	100 µg
				A00636-200	200 µg (5x40 µg)
His Tag	His-tag Antibody, pAb, Rabbit	—	ELISA, WB	A00174-40	40 µg
				A00174-100	100 µg
				A00174-200	200 µg (5x40 µg)
	His-tag antibody [Biotin], pAb, Rabbit	Biotin	WB	A00205-40	40 µg
				A00205-100	100 µg
HSV Tag	HSV-tag Antibody, pAb, Rabbit	—	ELISA, WB	A00624-40	40 µg
				A00624-100	100 µg
KT3 Tag	KT3-tag Antibody, pAb, Rabbit	—	ELISA, WB	A00632-40	40 µg
				A00632-100	100 µg
				A00632-200	200 µg (5x40 µg)
MAT Tag	MAT-tag Antibody, pAb, Rabbit	—	ELISA, WB	A00681-40	40 µg
				A00681-100	100 µg
				A00681-200	200 µg (5x40 µg)
MBP Tag	MBP-tag Antibody, mAb, Mouse	—	ELISA, WB	A00190-100	100 µg
				A01629-40	40 µg
Nano Tag	Nano-tag Antibody, pAb, Rabbit	—	WB	A01629-100	100 µg
				A00626-40	40 µg
Strep II Tag	NWSHPQFEK Antibody, pAb, Rabbit	—	ELISA, WB	A00626-100	100 µg
				A00626-200	200 µg (5x40 µg)
				A00875-40	40 µg
	NWSHPQFEK Antibody [HRP], pAb, Rabbit	HRP	ELISA, WB	A00875-100	100 µg
				A01658-40	40 µg
OLLAS Tag	OLLAS-tag Antibody, pAb, Rabbit	—	WB	A01658-100	100 µg
				A01658-200	200 µg (5x40 µg)
				A00637-40	40 µg
Protein C Tag	Protein C-tag Antibody (HPC4), pAb, Rabbit	—	ELISA, WB	A00637-100	100 µg
				A00637-200	200 µg (5x40 µg)
				A00682-40	40 µg
RFP Tag	RFP-tag Antibody, pAb, Rabbit	—	ELISA, WB	A00682-100	100 µg
				A00682-200	200 µg (5x40 µg)
				A01628-40	40 µg
Rho Tag	Rho-tag Antibody, pAb, Rabbit	—	WB	A01628-100	100 µg
				A00679-40	40 µg
S1 Tag	S1-tag Antibody, pAb, Rabbit	—	ELISA, WB	A00679-100	100 µg
				A00679-200	200 µg (5x40 µg)
				A00684-40	40 µg
SNAP Tag	SNAP-tag Antibody, pAb, Rabbit	—	ELISA, WB	A00684-100	100 µg
				A00684-200	200 µg (5x40 µg)

Tag	Product	Conjugation	Applications	Cat. No.	Size
SRT Tag	SRT-tag Antibody, pAb, Rabbit	—	ELISA, WB	A00725-40	40 µg
				A00725-100	100 µg
				A00725-200	200 µg (5x40 µg)
S Tag	S-tag Antibody, pAb, Rabbit	—	ELISA, WB	A00625-100	100 µg
SUMO Tag	SUMO-tag Antibody, pAb, Rabbit	—	ELISA, WB	A00640	500 µg
	SUMO-tag Antibody(4G11E9), mAb, Mouse	—	ELISA, WB	A01693-40	40 µg
				A01693-100	100 µg
A01693-200	200 µg (5x40 µg)				
T7 Tag	T7-tag Antibody, pAb, Rabbit	—	WB	A00622-40	40 µg
				A00622-100	100 µg
				A00622-200	200 µg (5x40 µg)
Tag-100 Tag	Tag-100-tag Antibody, pAb, Rabbit	—	ELISA, WB	A00677-40	40 µg
				A00677-100	100 µg
				A00677-200	200 µg (5x40 µg)
TAP Tag	TAP-tag Antibody, pAb, Rabbit	—	ELISA, WB	A00683-100	100 µg
	TAP-tag Antibody [HRP], pAb, Rabbit	HRP	ELISA, WB	A01435-40	40 µg
				A01435-100	100 µg
A01435-200	200 µg (5x40 µg)				
TF Tag	TF-tag Antibody, pAb, Rabbit	—	ELISA, WB, IP	A01329-40	40 µg
				A01329-100	100 µg
Trx Tag	Trx-tag Antibody, pAb, Goat	—	ELISA, WB	A00129-40	40 µg
				A00129-100	100 µg
				A00129-200	200 µg (5x40 µg)
	Trx-tag Antibody, mAb, Mouse	—	ELISA, WB	A00180-40	40 µg
				A00180-100	100 µg
A00180-200	200 µg (5x40 µg)				
Ty1 Tag	Ty1-tag Antibody, pAb, Rabbit	—	ELISA, WB, IP	A01004-40	40 µg
				A01004-100	100 µg
				A01004-200	200 µg (5x40 µg)
Universal Tag	Universal-tag Antibody, pAb, Rabbit	—	ELISA, WB	A00680-40	40 µg
				A00680-100	100 µg
				A00680-200	200 µg (5x40 µg)
V5 Tag	V5-tag Antibody, pAb, Rabbit	—	ELISA, WB	A00623-100	100 µg
	V5-tag Antibody, mAb, Mouse	—	ELISA, WB, IHC	A00641	100 µg
	V5-tag Antibody [HRP], pAb, Rabbit	HRP	ELISA, WB	A00877-40	40 µg
				A00877-100	100 µg
A00877-200	200 µg (5x40 µg)				
VSV-G Tag	VSV-G-tag Antibody, pAb, Rabbit	—	ELISA, WB	A00199-40	40 µg
				A00199-100	100 µg
				A00199-200	200 µg (5x40 µg)
	VSV-G-tag Antibody [HRP], pAb, Rabbit	HRP	ELISA, WB	A00872-40	40 µg
				A00872-100	100 µg
A00872-200	200 µg (5x40 µg)				

FCM: Flow Cytometry; IF: Immunofluorescence; IHC: Immunohistochemistry; IP: Immunoprecipitation; WB: Western Blotting

For more information about Epitope Tag Antibodies, please visit our webpage at

http://www.genscript.com/epitope_antibody.html.

THE™ Elite Antibodies

The Best Quality Antibodies in the Industry

Features:

- **Ultra Sensitivity:** More sensitive than most top-brand antibodies on the market
- **Ultra Specificity:** No cross reactivity guaranteed
- **Ultra Affinity:** Superior low dissociation constant Kd
- **Ultra Reactivity:** Binding to exposed terminal and internal tags
- **Ultra Clear Background:** Superior signal-to-noise ratio
- **Ultra Stability:** Stable lyophilized form with at least a two-year shelf life
- **Ultra Convenience:** Wide applications used for various research purposes, and no secondary antibody needed for conjugated antibodies

What does THE™ Elite quality mean?

THE™ stands for THE unmistakable, THE irreplaceable, and THE best quality in the industry. THE™ Elite Antibodies are the most precise and effective antibody series that meets the most demanding research requirements. We recently compared our THE™ Elite antibodies to several major competitive products from Abcam, Sigma, and Invitrogen to test antibody sensitivity in recognizing target proteins. The antibodies were tested side by side with the same quantity and gradient of antigens and under the same conditions. This comparison reveals that GenScript's THE™ Elite antibodies provide better sensitivity. Further sensitivity testing shows that all of THE™ Elite antibodies can detect nanogram levels of tagged recombinant proteins using chemiluminescence.

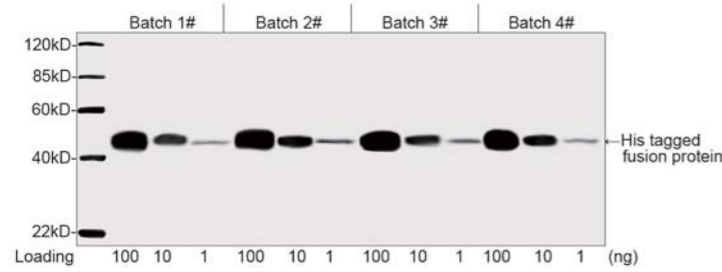
How are THE™ Elites selected?

To produce THE™ Elite antibodies, the most productive and stable hybridoma cell clones are selected. THE™ Elite antibodies are then isolated from the cell lines that show the highest specificity against the corresponding tag.

Why choose THE™ Elites?

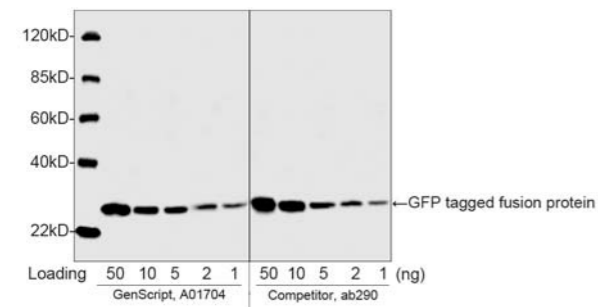
Long stability
High sensitivity Wide applications
Excellent lot-to-lot consistency
Superior signal-to-noise ratios

Lot-to-Lot Consistency



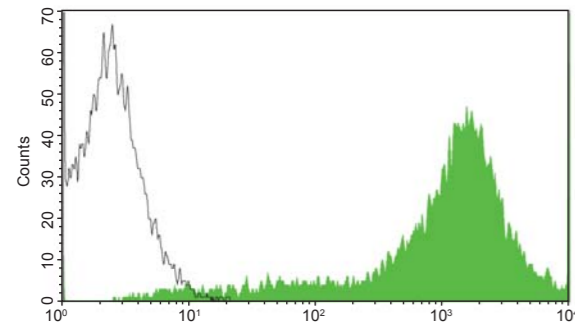
Western blot analysis of purified His-tagged fusion protein comparing batch #1, #2, #3 and #4 of THE™ His Tag Antibody (Cat.No. A00186-100, 1 µg/ml), shows that signals remain consistent from batch to batch.

Superior Sensitivity

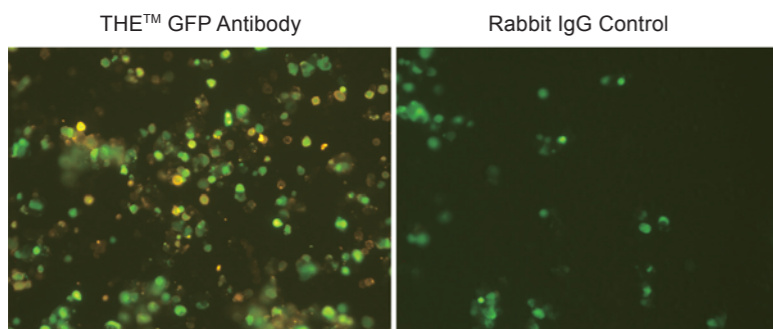


Sensitivity comparison of GFP Antibody between GenScript (A01704, 0.2 µg/ml) and Abcam (ab290, 1:5000) by Western blot.

Wide Applications



Flow cytometric analysis of transfected HEK293 cell expressing His-tagged protein using THE™ Anti-His-tag [FITC] Monoclonal Antibody (GenScript, A01620; shaded peak) or with a negative control antibody (open peak).



Immunocytochemistry/Immunofluorescence analysis of GFP fusion gene-transfected HEK293 cells using THE™ GFP Antibody, pAb, Rabbit (GenScript, A01704) and Rabbit IgG Control (Whole Molecule), Purified (GenScript, A01008).

Table 1. Selection Guide for GenScript THE™ ELITE Tag Antibodies

Tag	Specificity	Recognize position			Conjugation	Applications	Cat.No.	Size		
		Internal	N-terminal	C-terminal						
c-Myc Tag	EQKLISEEDL	√	√	√	—	ELISA, WB, IP	A00704-100	100 µg		
					HRP	ELISA, WB, IF, IP	A00863-100	100 µg		
					Biotin	ELISA, WB	A00864-40	40 µg		
						A00864-200	200 µg			
Flag Tag	DYKDDDDK	√	√	√	—	ELISA, WB, IF, FCM, IP	A00187-100	100 µg		
							A00187-200	200 µg		
					HRP	ELISA, WB	A01428-100	100 µg		
					FITC	IF, FCM	A01632	100 µg		
						A01429-100	100 µg			
GFP Tag	Bind all GFP variants/ Weakly bind certain RFP variants	—	—	—	—	WB, IF, FCM, IP	A01704-40	40 µg		
							A01704-100	100 µg		
							A01704-200	200 µg		
GST Tag	Recombinant GST and GST-tagged protein	√	√	√	—	ELISA, WB	A00865-40	40 µg		
							A00865-100	100 µg		
							A00865-200	200 µg		
							A00865-500	500 µg		
							HRP	ELISA, WB	A00866-40	40 µg
									A00866-100	100 µg
						A00867-40	40 µg			
						A00867-200	200 µg			
HA Tag	YPYDVPDYA	√	√	√	—	ELISA, WB, IF, FCM, IP	A01244-100	100 µg		
							HRP	ELISA, WB	A01296	100 µg
							FITC	IF, FCM	A01621	100 µg
							Biotin	ELISA, WB	A01297	100 µg
His Tag	6×Histidines 5×Histidines 4×Histidines	√	√	√	—	ELISA, WB, IF, FCM, IP	A00186-100	100 µg		
							HRP	ELISA, WB	A00612	100 µg
							FITC	IF, FCM	A01620	100 µg
							Biotin	ELISA, WB	A00613	100 µg
Strep II Tag	NWSHPQFEK	—	√	√	—	ELISA, WB, IF, FCM, IP	A01732-40	40 µg		
									A01732-100	100 µg
									A01732-200	200 µg
							HRP	ELISA, WB	A01742-40	40 µg
									A01742-100	100 µg
									A01742-200	200 µg
						A01736-100	100 µg			
						A01737-40	40 µg			
						A01737-100	100 µg			
Protein C Tag	CEDQVDPRLIDGK	—	√	√	—	ELISA, WB, IF, FCM, IP	A01774-40	40 µg		
							A01774-100	100 µg		
V5 Tag	GKPIPPLLGLDST	√	√	√	—	ELISA, WB, IF, FCM, IP	A01724-40	40 µg		
									A01724-100	100 µg
									A01724-200	200 µg
							HRP	ELISA, WB	A01733-100	100 µg
						A01735-100	100 µg			

FCM: Flow Cytometry; IF: Immunofluorescence; IHC: Immunohistochemistry; IP: Immunoprecipitation; WB: Western Blotting
For more information about THE™ Elite Antibodies, please visit our webpage at http://www.genscript.com/THE_antibody.html.

Related Products

1. THE™ ELITE Loading Control and Assay Antibodies

Cat.No.	Name	Conjugation	Applications	Size
A01509-40	THE™ cAMP Antibody, mAb, Mouse	—	ELISA	40 µg
A01509-100	THE™ cAMP Antibody, mAb, Mouse	—	ELISA	100 µg
A01509-200	THE™ cAMP Antibody, mAb, Mouse	—	ELISA	200 µg
A01508-40	THE™ cGMP Antibody, mAb, Mouse	—	ELISA	40 µg
A01508-100	THE™ cGMP Antibody, mAb, Mouse	—	ELISA	100 µg
A01795-100	THE™ PEG Antibody, mAb, Mouse NEW	—	ELISA, WB, IHC	100 µg
A01795-500	THE™ PEG Antibody, mAb, Mouse NEW	—	ELISA, WB, IHC	500 µg
A01650-100	THE™ BrdU Antibody, mAb, Mouse	—	ELISA, FCM	100 µg
A01653	THE™ BrdU Antibody [HRP], mAb, Mouse	HRP	ELISA	100 µg
A01410-40	THE™ alpha Tubulin Antibody, mAb, Mouse	—	ELISA, WB, IF	40 µg
A01410-100	THE™ alpha Tubulin Antibody, mAb, Mouse	—	ELISA, WB, IF	100 µg
A01490	THE™ alpha Tubulin Antibody [HRP], mAb, Mouse	HRP	ELISA, WB	100 µg
A01545	THE™ alpha Tubulin Antibody [Biotin], mAb, Mouse	Biotin	ELISA, WB	100 µg
A00730-40	THE™ beta Actin Antibody [HRP], mAb, Mouse	HRP	ELISA, WB	40 µg
A00730-200	THE™ beta Actin Antibody [HRP], mAb, Mouse	HRP	ELISA, WB	200 µg
A01546	THE™ beta Actin Antibody [Biotin], mAb, Mouse	Biotin	ELISA, WB	100 µg
A00702-40	THE™ beta Actin Antibody, mAb, Mouse	—	ELISA, WB	40 µg
A00702-100	THE™ beta Actin Antibody, mAb, Mouse	—	ELISA, WB	100 µg
A00702-200	THE™ beta Actin Antibody, mAb, Mouse	—	ELISA, WB	200 µg

FCM: Flow Cytometry; IF: Immunofluorescence; IHC: Immunohistochemistry; IP: Immunoprecipitation; WB: Western Blotting

2. Purification & Detection for Tagged Proteins

Cat.No.	Name	Applications	Size
M0001	GST Lysates	Positive Control/Loading Control	100 µg
M0002	Myc Lysates	Positive Control	100 µg
M0004	HA Lysates	Positive Control	100 µg
M0005	DYKDDDDK Lysates	Positive Control	100 µg
M0100	Multiple Tag Cell Lysate	Positive Control	200 µg
M0101	Multiple Tag (Purified)	Positive Control	200 µg
L00207	GST Fusion Protein Purification Kit	Protein Purification	1 kit
L00275	Mouse Anti-His mAb MagBeads	Protein Purification, IP	2 ml
L00336	Mouse Anti-GST mAb MagBeads	Protein Purification, IP	2 ml
L00411	GST Tag ELISA Detection Kit	ELISA	1 kit (1x96 well)
L00425	Anti-DYKDDDDK IP Resin	Protein Purification, IP	1 ml
L00432	Anti-DYKDDDDK G1 Affinity Resin	Protein Purification, IP	1 ml, 5 ml, 10 ml, 25 ml
L00436	His Tag ELISA Detection Kit	ELISA	1 kit
L00438	His Mini Purification and Detection Kit	Protein Purification and Detection, WB	1 kit
L00440b	His Tag Antibody Plate	ELISA Accessory	5 plates (black, 96 wells)
L00440c	His Tag Antibody Plate	ELISA Accessory	5 plates (clear, 96 wells)
L00440w	His Tag Antibody Plate	ELISA Accessory	5 plates (white, 96 wells)
L00445B	Flag Tag Antibody Plate	ELISA Accessory	5 plates (black, 96 wells)
L00445C	Flag Tag Antibody Plate	ELISA Accessory	5 plates (clear, 96 wells)
L00445W	Flag Tag Antibody Plate	ELISA Accessory	5 plates (white, 96 wells)

Publication References

Jarmander J, Gustavsson M, Do TH, Samuelson P, Larsson G. A dual tag system for facilitated detection of surface expressed proteins in *Escherichia coli*. *Microb Cell Fact*. 2012 Sep 3; 11:118.

Park E, Rapoport TA. Bacterial protein translocation requires only one copy of the SecY complex in vivo. *J Cell Biol*. 2012 Sep 3; 198(5):881-93.

Shulga YV, Anderson RA, Topham MK, Epand RM. Phosphatidylinositol-4-phosphate 5-kinase isoforms exhibit acyl chain selectivity for both substrate and lipid activator. *J Biol Chem*. 2012 Oct 19; 287(43):35953-63.

Carnes J, Schnauffer A, McDermott SM, Domingo G, Proff R, Steinberg AG, Kurtz I, Stuart K. Mutational analysis of *Trypanosoma brucei* editosome proteins KREP4 and KREP5 reveals domains critical for function. *RNA*. 2012 Oct; 18(10):1897-909.

Stender JD, Pascual G, Liu W, Kaikkonen MU, Do K, Spann NJ, Boutros M, Perrimon N, Rosenfeld MG, Glass CK. Control of proinflammatory gene programs by regulated trimethylation and demethylation of histone H4K20. *Mol Cell*. 2012 Oct 12; 48(1):28-38.

Krager KJ, Sarkar M, Twait EC, Lill NL, Koland JG. A novel biotinylated lipid raft reporter for electron microscopic imaging of plasma membrane microdomains. *J Lipid Res*. 2012 Oct; 53(10):2214-25.

Frank EG, McDonald JP, Karata K, Huston D, Woodgate R. A strategy for the expression of recombinant proteins traditionally hard to purify. *Anal Biochem*. 2012 Oct 15; 429(2):132-9.

Jerlström-Hultqvist J, Einarsson E, Svärd SG. Stable transfection of the diplomonad parasite *Spironucleus salmonicida*. *Eukaryot Cell*. 2012 Nov; 11(11):1353-61.

Ota T, Doyle-Cooper C, Cooper AB, Huber M, Falkowska E, Doores KJ, Hangartner L, Le K, Sok D, Jardine J, Lifson J, Wu X, Mascola JR, Poignard P, Binley JM, Chakrabarti BK, Schief WR, Wyatt RT, Burton DR, Nemazee D. Anti-HIV B Cell lines as candidate vaccine biosensors. *J Immunol*. 2012 Nov 15; 189(10):4816-24.

Wilusz JE, Jnbaptiste CK, Lu LY, Kuhn CD, Joshua-Tor L, Sharp PA. A triple helix stabilizes the 3' ends of long noncoding RNAs that lack poly(A) tails. *Genes Dev*. 2012 Nov 1; 26(21):2392-407.

Yu Y, Ulbrich MH, Li MH, Dobbins S, Zhang WK, Tong L, Isacoff EY, Yang J. Molecular mechanism of the assembly of an acid-sensing receptor ion channel complex. *Nat Commun*. 2012; 3:1252.

Evans TL, Blice-Baum AC, Mihalescu MR. Analysis of the Fragile X mental retardation protein isoforms 1, 2 and 3 interactions with the G-quadruplex forming semaphorin 3F mRNA. *Mol Biosyst*. 2012 Feb; 8(2):642-9.

Jerlström-Hultqvist J, Einarsson E, Svärd SG. Stable transfection of the diplomonad parasite *Spironucleus salmonicida*. *Eukaryot Cell*. 2012 Nov; 11(11):1353-61.

Sachen KL, Strohman MJ, Singletary J, Alizadeh AA, Kattah NH, Lossos C, Mellins ED, Levy S, Levy R. Self-antigen recognition by follicular lymphoma B-cell receptors. *Blood*. 2012 Nov 15; 120(20):4182-90.

Ma Y, Walker RK, Zhao Y, Berkowitz GA. Linking ligand perception by PEPR pattern recognition receptors to cytosolic Ca²⁺ elevation and downstream immune signaling in plants. *Proc Natl Acad Sci U S A*. 2012 Nov 27; 109(48):19852-7.