

# eBlot™ L1

Fast wet transfer system for mini gels



The eBlot™ transfer device allows for fast, efficient and consistent transfer of 1 or 2 mini gels at a time. The setup takes less than 2 minutes and allows for efficient transfer of small, medium and large proteins. It also improves sensitivity for difficult to transfer proteins such as very large or heavily phosphorylated proteins.

## Features and benefits:



**Better transfer efficiency**



**Fast transfer time of 9-17 minutes**



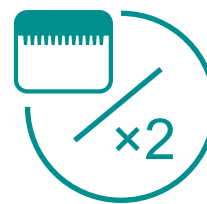
**High transfer efficiency for all protein sizes**



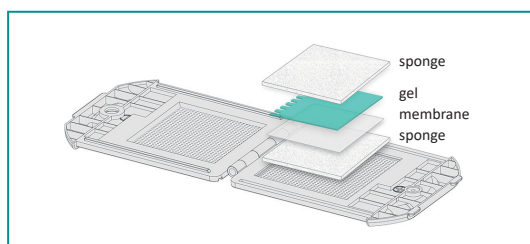
**Easy to assemble, one button operation**



**Programmable: customized protocols**

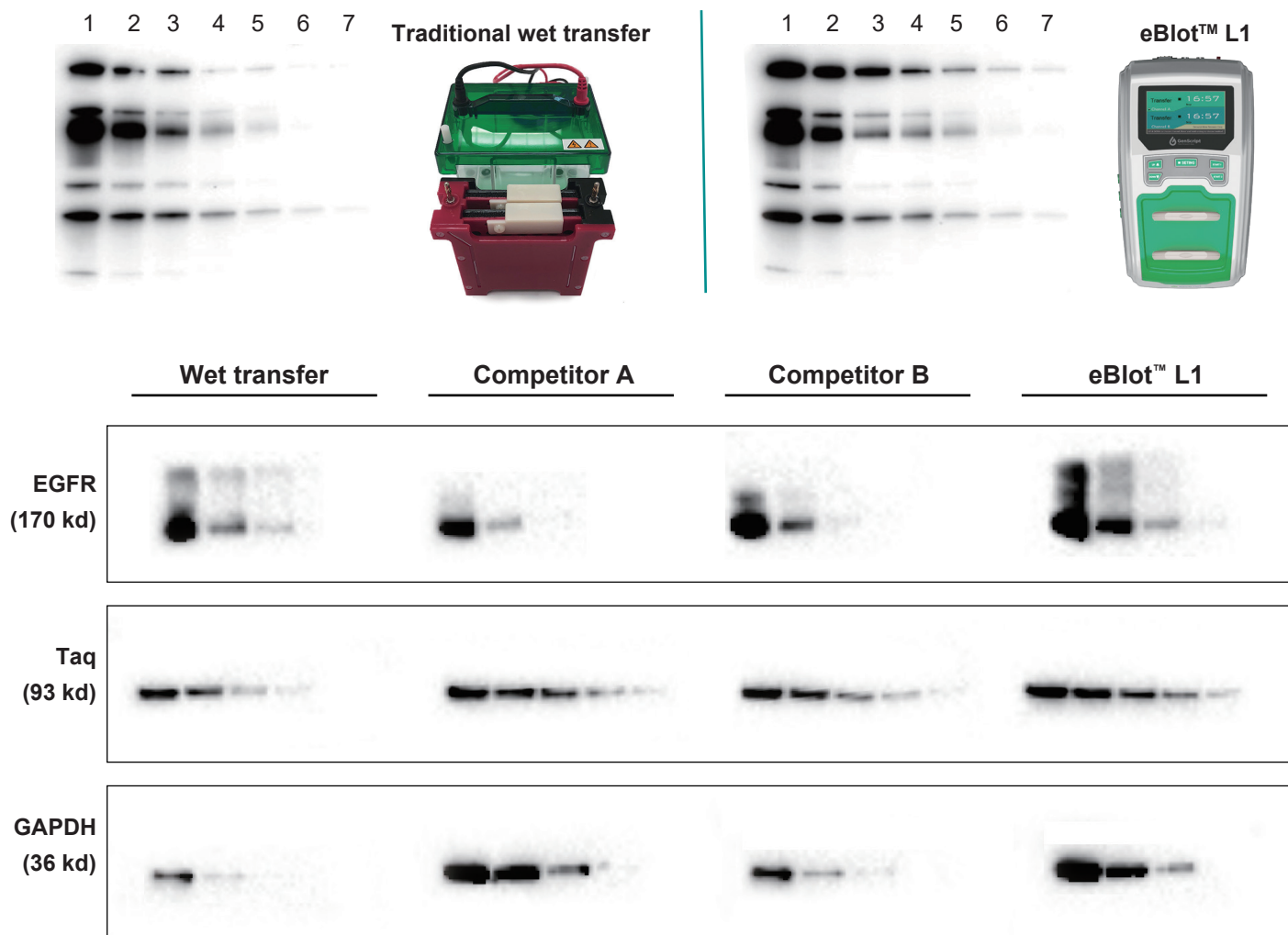


**Transfer 1 or 2 gels at a time**



Avoid the mess of a traditional wet transfer with our easy to assemble dry sponge sandwich

## Better transfer efficiency compared to other well known methods and products



Request a Free Demo: [product@genscript.com](mailto:product@genscript.com)

Ordering information	Quantity	Cat. No
eBlot™ L1 fast wet protein transfer device	1 unit	L00686
eBlot L1 Transfer sandwich without membrane (with buffers for NC)	1 kit (30x)	L00724
eBlot L1 Transfer sandwich without membrane (with buffers for PVDF)	1 kit (30x)	L00726
Complete eBlot L1 Transfer sandwich (PVDF)	1 kit (30x)	L00727

© 2018 Genscript Inc. All rights reserved.

[www.genscript.com](http://www.genscript.com)