

**Human Recombinant OX40 Stable Cell Line**  
**Cat. No. M00608**

**Version 06152017**

---

## **I. INTRODUCTION**

Catalog Number: M00608

Cell Line Name: GS-H2/OX40

Gene Synonyms: CD134, ACT35, TNFRSF4, IMD16

Expressed Gene: NM\_003327.3; no expressed tags

Host Cell: GS-H2

Quantity: Two vials of frozen cells ( $1 \times 10^6$  per vial)

Stability: 20 passages

Application: *in vitro* functional assay

Freeze Medium: 95% complete growth medium, 5% DMSO

Complete Growth Medium: MEM, 10% FBS

Culture Medium: MEM, 10% FBS, 2  $\mu\text{g/ml}$  Puromycin, 200  $\mu\text{g/ml}$  Hygromycin B

Mycoplasma Status: Negative

Functional Performance: For OX40L protein, Signal / Background (S/B) > 3, average  $\text{EC}_{50}$  of OX40L historic data in GenScript is 100.12 ng/ml.

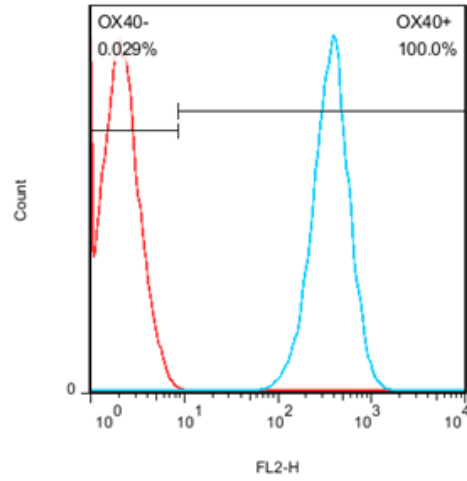
Storage: Liquid nitrogen immediately upon receipt

## **II. BACKGROUND**

OX40 (CD134) and its binding partner, OX40L (CD252), are members of the TNFR/TNF superfamily and are expressed on activated  $\text{CD4}^+$  and  $\text{CD8}^+$  T cells as well as a number of other lymphoid and non-lymphoid cells. The binding of CD252 (OX40L) on TH cells to OX40 activates antigen presenting cells and induces a variety of downstream effects.

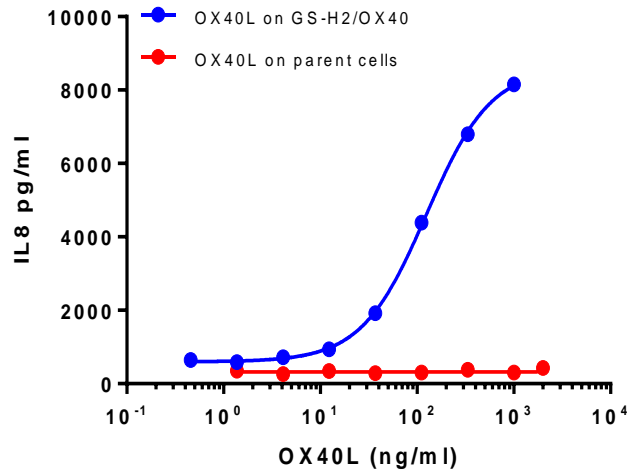
### III. REPRESENTATIVE DATA

- Protein Expression Validation



**Figure 1.** Flow cytometry analysis of OX40 expression in GS-H2/OX40 cells. Red: GS-H2, Blue: GS-H2/OX40.

- Validation by *in vitro* Functional Assay



**Figure 2.** Functional analysis of OX40L protein on GS-H2/OX40 cells

- Stability Validation

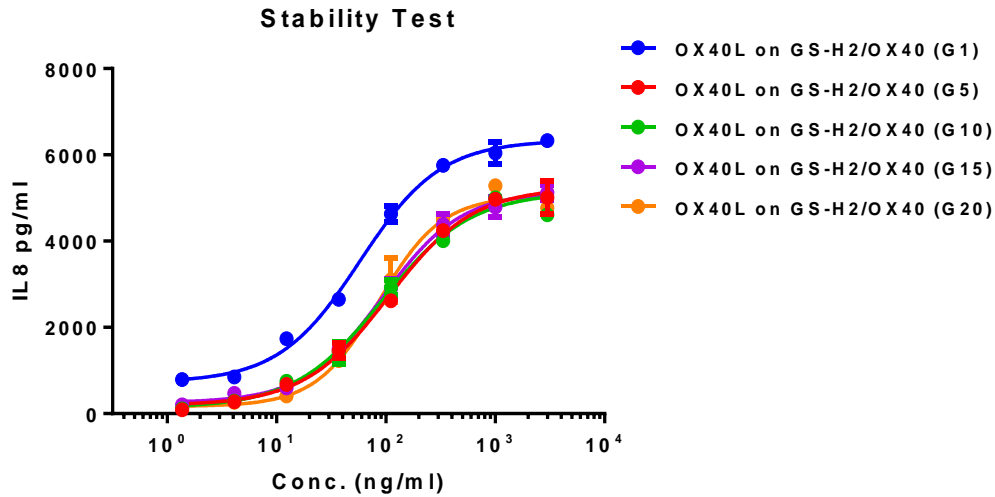


Figure 3. Stability testing of GS-H2/OX40 cells by *in vitro* functional assay

#### IV. THAWING AND SUBCULTURING

##### Thawing Protocol

1. Remove the vial from liquid nitrogen tank and thaw cells quickly in a 37°C water-bath.
2. Just before the cells are completely thawed, decontaminate the outside of the vial with 70% ethanol and transfer the cells to a 15 ml centrifuge tube containing 9 ml of complete growth medium.
3. Pellet cells by centrifugation at 200 x g for 5 min, and remove the medium.
4. Resuspend the cells in complete growth medium.
5. Transfer the cell suspension to a 10 cm dish with 10 ml of complete growth medium.
6. Grow the cells in incubator with 37°C, 5 % CO<sub>2</sub>.
7. Add antibiotic in the following day.

##### Sub-culturing Protocol

1. Remove the culture medium from cells.
2. Wash cells with PBS (pH=7.4) to remove all traces of serum that contains trypsin inhibitor.
3. Add 2.0 ml of 0.25% (w/v) Trypsin-EDTA (Gibco, Cat No. 25200) solution into 10 cm dish and observe the cells under an inverted microscope until cell layer is dispersed (usually within 3 to 5 minutes).  
 Note: To avoid cells clumping, do not agitate the cells by hitting or shaking the dish while waiting for the cells detach. If cells are difficult to detach, please place the dish in 37°C incubator for ~2 minutes.
4. Add 6.0 to 8.0 ml of complete growth medium into dish and aspirate cells by gently pipetting.
5. Centrifuge the cells at 200 x g for 5 minutes, and remove the medium.
6. Resuspend the cells in culture medium and add the cells suspension to new culture dish.
7. Grow the cells in incubator with 37°C, 5 % CO<sub>2</sub>.

---

Subcultivation Ratio: A subcultivation ratio of 1:4 to 1:8 is recommended

Medium Renewal: Every 2 to 3 days

## V. REFERENCES

1. Michael Croft, Takanori So, Wei Duan, and Pejman Soroosh. The Significance of OX40 and OX40L to T cell Biology and Immune Disease. *Immunol Rev.* 2009 May; 229(1): 173-191.
2. Pratima Bansal-Pakala, Beth S. Halteman, Mary Huey-Yu Cheng and Michael Croft. Costimulation of CD8 T Cell Responses by OX40. *J Immunol.* 2004 April;172(8): 4821-4825.
3. Stefanie N. Linch, Michael J. McNamara, and William L. Redmond. OX40 Agonists and Combination Immunotherapy: Putting the Pedal to the Metal. *Front Oncol.* 2015; 5: 34.

**GenScript USA Inc,**

860 Centennial Ave.

Piscataway, NJ 08854

Toll-Free: 1-877-436-7274

Tel: 1-732-885-9188, Fax: 1-732-210-0262

Email: [product@genscript.com](mailto:product@genscript.com)

Web: <http://www.genscript.com>

**For Research Use Only.**

---

**860 Centennial Ave., Piscataway, NJ 08854, USA**

Toll-Free: 1-877-436-7274 Tel: 1-732-885-9188 Fax: 1-732-210-0262 Email: [product@genscript.com](mailto:product@genscript.com) Web: [www.genscript.com](http://www.genscript.com)

---

## Limited Use License Agreement

This is a legal agreement between you (Licensee) and GenScript USA Inc. governing use of GenScript's stable cell line products and protocols provided to licensee. By purchasing and using the stable cell line, the buyer agrees to comply with the following terms and conditions of this label license and recognizes and agrees to such restrictions:

- 1) The products are not transferable and will be used at the site where they were purchased. Transfer to another site owned by buyer will be permitted only upon written request by buyer followed by subsequent written approval by GenScript.
- 2) The purchaser cannot sell or otherwise transfer (a) this product (b) its components or (c) materials made using this product or its components to a third party.
- 3) The products sold by GenScript are for laboratory and animal research purposes only. The products are not to be used on humans, for consumption, or for any unlawful uses.

GenScript USA Inc. will not assert against the buyer a claim of infringement of patents owned or controlled by GenScript USA Inc. and claiming this product based upon the manufacture, use or sale of a clinical diagnostic, therapeutic and vaccine, or prophylactic product developed in research by the buyer in which this product or its components has been employed, provided that neither this product nor any of its components was used in the manufacture of such product. For information on the use of this product for other purposes, contact Marketing Department, GenScript USA Inc., GenScript 860 Centennial Ave Piscataway, NJ 08854. Phone: 1-732-885-9188. Fax: 1-732-210-0262. Email: [marketing@genscript.com](mailto:marketing@genscript.com).