

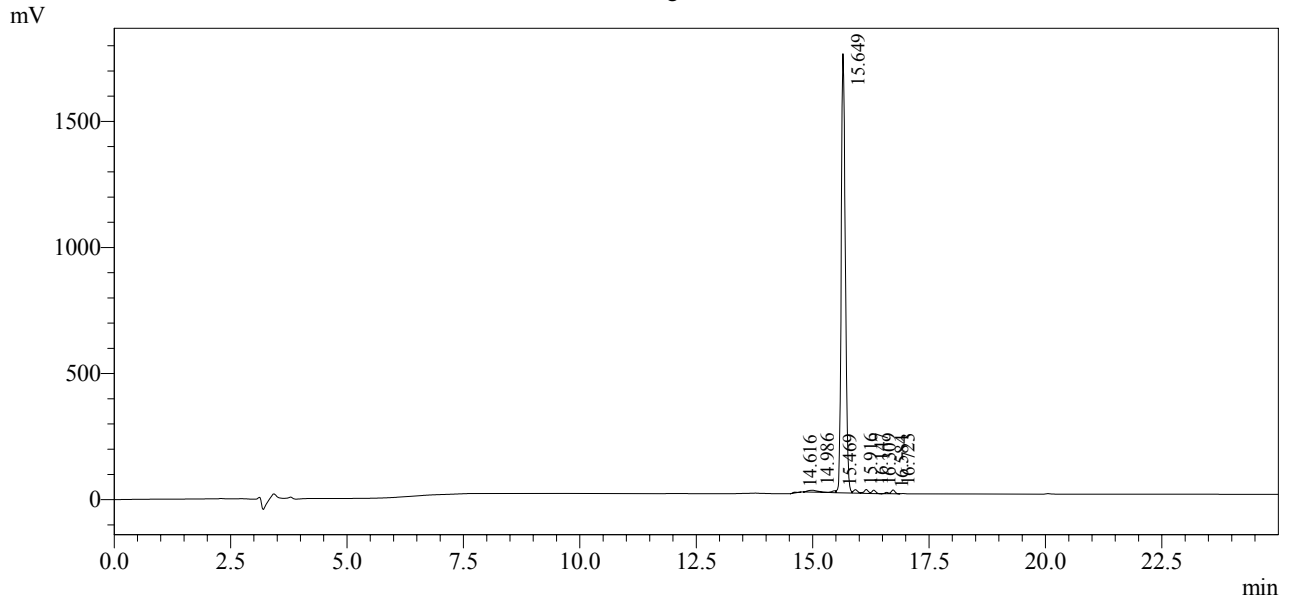
Sample Name : α -MSH,amide
 Cat. No. : RP10644
 Lot. No. : CB04907

Pump A : 0.065% trifluoroacetic in 100% water
 Pump B : 0.05% trifluoroacetic in 100% acetonitrile
 Total Flow : 1 ml / min
 Wavelength : 214 nm

Time	Unit	Command	Value	Comment
0.01	Pumps	Pump B Conc.	5	
25.00	Pumps	Pump B Conc.	65	
25.01	Pumps	Pump B Conc.	95	
35.00	Pumps	Pump B Conc.	95	
35.01	Pumps	Pump B Conc.	5	
45.00	Pumps	Pump B Conc.	5	
45.01	Controller	Stop		

<<Column Performance>>
 <Detector A>
 Column : AlltimaTM C18 4.6 x 250 mm

Chromatogram



1 Det.A Ch1 / 214nm

Peak Table

Detector A Ch1 214nm

Peak#	Ret. Time	Area	Height	Area %
1	14.616	19060	3493	0.169
2	14.986	112621	7467	0.996
3	15.469	44743	7117	0.396
4	15.649	10755988	1741691	95.148
5	15.916	85674	13715	0.758
6	16.147	99078	15333	0.876
7	16.309	74694	13250	0.661
8	16.584	29745	5468	0.263
9	16.723	82912	15169	0.733
Total		11304514	1822703	100.000