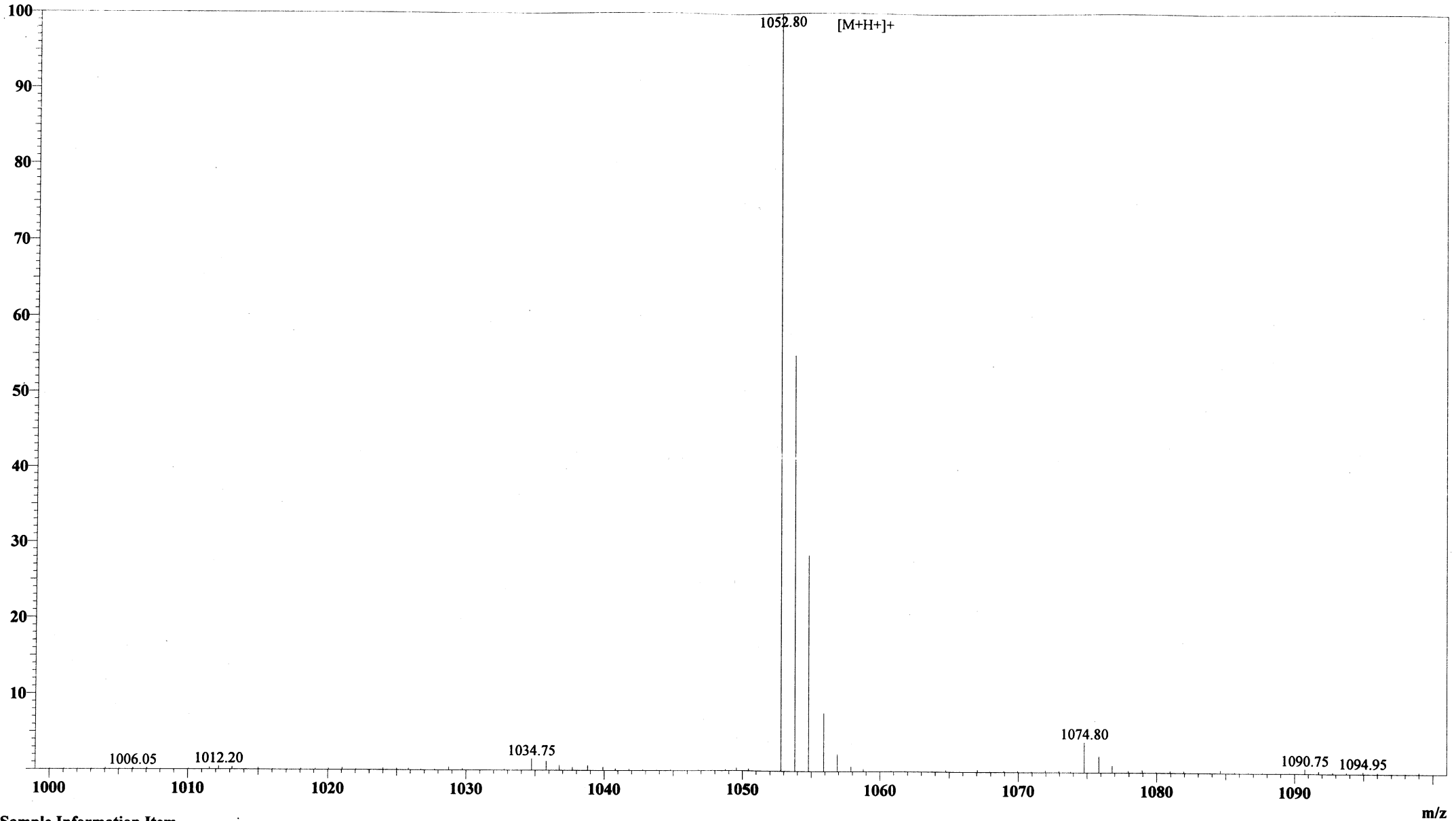


MS Spectrum

Positive



Sample Information Item

Date and Time : 2005-1-21 13:39:02  
User : xie  
Sample : RP10061(CG-9-NH2)  
Inj. Volume : 1.000  
MW : 1052.23

Cat. No.: RP10061  
Lot No.: PJ00913505

Probe: ESI  
Nebulizer Gas Flow: 1.5L/min  
CDL: -20.0v  
CDL Temp: 250°C  
Block Temp: 200°C

Probe bias: +4.5kv  
Detector: 1.5kv  
T. Flow: 0.2ml/min  
B. conc: 50%H2O/50%ACN