

E2-tag Antibody, pAb, Rabbit

Cat. No.: A00630-40

Size: 40 µg

Synonyms: Rabbit Anti-E2-tag; Anti-E2-tag

Description:

Rabbit Anti-E2-tag Polyclonal Antibody is supplied as a 40 µg aliquot at a concentration of 1 mg/ml in PBS, pH 7.4, containing 0.02% sodium azide.

Immunogen: E2 epitope tag peptide GVSSTSSDFRDR conjugated to KLH

Conjugation: Unconjugated

Formulation:

1 mg/ml in PBS, pH 7.4, containing 0.02% sodium azide.

Ig Subclass: Rabbit IgG

Specificity: This Antibody recognizes E2 tagged fusion proteins.

Purification: Immunoaffinity chromatography

Applications:

Working concentrations for specific applications should be

determined by the investigator. The appropriate concentrations may be affected by secondary antibody affinity, antigen concentration, the sensitivity of the method of detection, temperature, the length of the incubations, and other factors. The suitability of this antibody for applications other than those listed below has not been determined. The following concentration ranges are recommended starting points for this product.

ELISA: 0.05-0.2 µg/ml

Western blot: 0.1-1.0 µg/ml

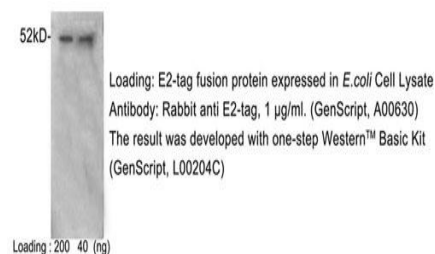
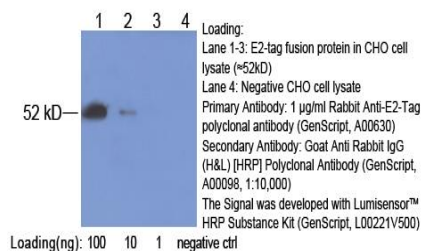
Western blot using ONE-HOUR Western™ Kit: For quick results, GenScript ONE-HOUR Western™ Kit L00204C is recommended. 10 µg of this antibody is mixed with 10 ml of WB solution for 8 cm X 8 cm membrane.

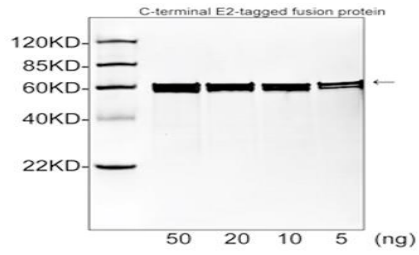
Other applications: User-optimized

Storage:

The antibody is stable for 2-3 weeks if stored at 2-8°C. For long term storage, aliquot and store at -20°C or below. Avoid repeated freezing and thawing cycles.

Example





Western blot analysis of E2 tagged fusion proteins expressed in *E. coli* cell lysate using Rabbit Anti-E2-tag Polyclonal Antibody (GenScript, A00630, 1 $\mu\text{g}/\text{ml}$) The signal was developed with IRDye™ 800 Conjugated Goat Anti-Rabbit IgG.