

THE™ beta Actin Antibody, mAb, Mouse**Cat. No.:** A00702-40**Size:** 40 µg**Synonyms:** cytoplasmic 1 antibody;**Description:**

β-actin is one of the six different actin isoforms that have been identified. The actin molecules found in cells of various species and tissues tend to be very similar in their immunological and physical properties. As a consequence, it has been difficult to produce potent antisera against this protein. Therefore, the availability of monoclonal antibodies to β-actin provides a useful and specific tool in the study of the intracellular distribution of β-actin and the static and dynamic aspects of the cytoskeleton.

Immunogen: A synthetic peptide DDDIAALVVDNGSG coupled to KLH**Host:** Mouse**Conjugation:** Unconjugated**Fusion Partner:**

Spleen cells are fused with SP2/0-Ag14 mouse myeloma cells

Formulation:

40 µg, lyophilized with PBS, pH 7.4, containing 1% BSA and 0.02% sodium azide.

Note: 100 µg, 200µg (GenScript, A00702), lyophilized with PBS, pH 7.4, containing 0.02% sodium azide, without BSA**Clone:** 2D1D10**Ig Subclass:** IgG2a, k**Specificity:** THE™ beta Actin Antibody, mAb, Mouse reacts with mouse, rabbit, chicken, human, hamster, cow, goat, fish, and pig. It has not yet been tested in other species.**Purification:** Protein A or G affinity column**Applications:**

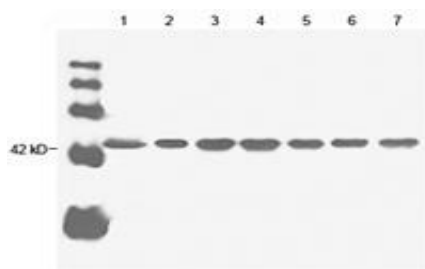
Working concentrations for specific applications should be determined by the investigator. The appropriate concentrations may be affected by secondary antibody affinity, antigen concentration, the sensitivity of the method of detection, temperature, the length of the incubations, and other factors. The suitability of this antibody for applications other than those listed below has not been determined. The following concentration ranges are recommended starting points for this product.

ELISA: 0.1-1.0 µg/ml**Western blot:** 0.1-1.0 µg/ml**Other applications:** user-optimized**Species Reactivity:** Mouse, rabbit, chicken, human, hamster, cow, goat, fish, and pig**Reconstitution:**

Reconstitute the lyophilized antibody with deionized water to the final concentration of 0.5 mg/ml.

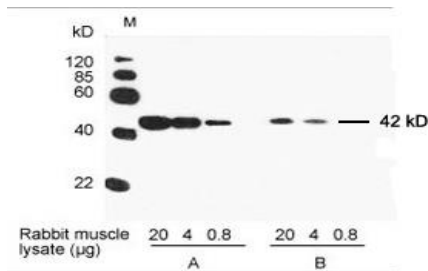
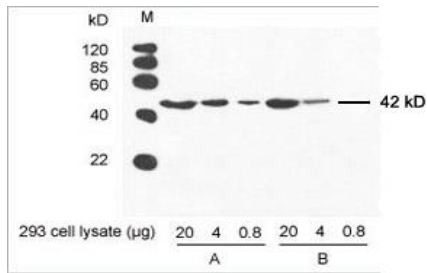
Storage:

The antibody is stable in lyophilized form if stored at -20°C or below. The reconstituted antibody can be stored for 2-3 weeks at 2-8°C. For long term storage, aliquot and store at -20°C or below. Avoid repeated freezing and thawing cycles.

Example

Lane 1: 20 µg HeLa cell lysate
Lane 2: 20 µg sp2/0 cell lysate
Lane 3: 20 µg goat muscle lysate
Lane 4: 20 µg rabbit muscle lysate
Lane 5: 20 µg chicken muscle lysate
Lane 6: 20 µg CHO cell lysate
Lane 7: 20 µg fish muscle lysate

Primary antibody: 1 µg/ml THE™ Anti-β-actin Monoclonal Antibody (Mouse) (GenScript, A00702)



Secondary antibody: Goat Anti-Mouse IgG (H&L) [HRP] Polyclonal Antibody (GenScript, A00160, 1:20,000)

Primary antibody:

A. 0.1 $\mu\text{g}/\text{ml}$ THE™ Anti- β -actin Monoclonal Antibody (Mouse) (GenScript, A00702)

B. 0.1 $\mu\text{g}/\text{ml}$ THE™ Anti- β -actin Monoclonal Antibody (Mouse) (Company A, clone 8226)

Secondary antibody:

Goat Anti-Mouse IgG (H&L) [HRP] Polyclonal Antibody (GenScript, 1:10,000, A00160)

The signal was developed with LumiSensor™ HRP Substrate Kit (GenScript, L00221V500)

Primary antibody:

A. 0.1 $\mu\text{g}/\text{ml}$ THE™ Anti- β -actin Monoclonal Antibody (Mouse) (GenScript, A00702)

B. 0.1 $\mu\text{g}/\text{ml}$ THE™ Anti- β -actin Monoclonal Antibody (Mouse) (Company A, clone 8226)

Secondary antibody:

Goat Anti-Mouse IgG (H&L) [HRP] Polyclonal Antibody (GenScript, 1:10,000, A00160)

The signal was developed with LumiSensor™ HRP Substrate Kit (GenScript, L00221V500)