

## CBP Tag Antibody, mAb, Mouse

**Cat. No.:** A01798-100

**Size:** 100 µg

**Synonyms:** CBP Tag Antibody, mAb, Mouse

### Description:

CBP affinity tag is a useful tag in protein study which can be added to the N or C terminus of proteins of interest through DNA recombinant technology. The tag is derived from muscle myosin light-chain kinase. The tag comprises 26 amino acid residues with the molecular weight of 4 kDa and sequence of KRRWKKNFIAVSAANRFKISSGAL. CBP tag has the relatively high affinity for calmodulin (CaM). CBP-tagged proteins can be purified from crude cell extracts through CaM affinity resin. CBP Tag antibody is a useful tool in analysis of CBP-tagged proteins.

**GenScript CBP Tag Antibody, mAb, Mouse** is produced from the hybridoma resulting from fusion of SP2/0-Ag14 myeloma and B-lymphocytes harvested from mouse immunized with CBP tag peptide conjugated to KLH.

**Immunogen:** CBP tag peptide conjugated to KLH

**Host:** Mouse

### Formulation:

0.5 mg/ml, lyophilized with PBS, pH 7.4, containing 0.02% sodium azide.

**Clone:** 1D11E5

**Ig Subclass:** IgG2b, $\kappa$

**Specificity:** GenScript CBP Tag Antibody, mAb, Mouse recognizes CBP-tagged proteins.

**Purification:** Protein A affinity column

### Applications:

Working concentrations for specific applications should be determined by the investigator. The appropriate concentrations may be affected by secondary antibody affinity, antigen concentration, the sensitivity of the method of detection, temperature, the length of the incubations, and other factors. The suitability of this antibody for applications other than those listed below has not been determined. The following concentration ranges are recommended starting points for this product.

**Western blot:** 1 µg/ml.

**Immunoprecipitation:** 1-5 µg/ml.

**ELISA:** 0.001-0.002 µg/ml.

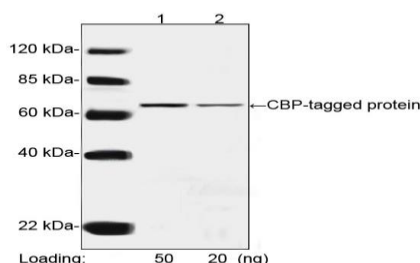
### Reconstitution:

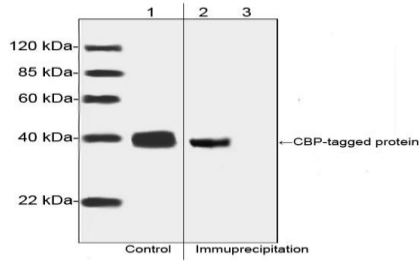
Reconstitute the lyophilized product with deionized water (or equivalent) to make antibody concentration of 0.5 mg/ml.

### Storage:

The lyophilized product remains stable up to 1 year at -20 °C from date of receipt. Upon reconstitution, it can be stored for 2-3 weeks at 2-8 °C or for up to 12 months at -20 °C or below. Avoid repeated freezing and thawing cycles.

### Example





Western blot analysis of immuno-precipitates CBP-tagged protein from the transfected CHO cell lysates.

Lane 1: CBP-tagged protein from the transfected CHO cell lysates as input control.

Lane 2: Immunoprecipitates of CBP-tagged protein from the transfected CHO cell lysates with CBP Tag Antibody, mAb, Mouse (GenScript, A01798).

Lane 3: Immunoprecipitates of the CBP-tagged protein from the transfected CHO cell lysates with Mouse IgG Control (Whole Molecule), Purified (GenScript, A01007).