

Rev05  
Update: Oct,24,2022

**DATASHEET**

# Mouse Anti-Human IgG Fab Antibody (12H3C4A6)[HRP], mAb

Cat. No.: A01855

## Overview

<b>Specificity</b>	GenScript Mouse Anti-Human IgG Fab Antibody (12H3C4A6)[HRP], mAb reacts with the Fab portion of human IgG but not with the Fc portion of human IgG. The monoclonal antibody has no cross-reactivity with mouse, rat, rabbit, chicken or goat immunoglobulins.
<b>Host Species</b>	Mouse
<b>Immunogen</b>	Human IgG(H&L)
<b>Conjugate</b>	Horseradish peroxidase (HRP)

## Applications

Working concentrations for specific applications should be determined by the investigator. The appropriate concentrations may be affected by primary antibody affinity, antigen concentration, the sensitivity of the method of detection, temperature, the length of the incubations, and other factors. The suitability of this antibody for applications other than those listed below has not been determined. The following concentration ranges are recommended starting points for this product. Optimal working dilutions must be determined by the end user.

<b>Application</b>	<b>Recommended Usage</b>
Western Blot	1:5,000-1:20,000
ELISA	1:5,000-1:20,000
Immunohistochemistry (IHC)	User-optimized

## Properties

<b>Form</b>	Liquid
<b>Storage Buffer</b>	Supplied in PBS (pH 7.4), 1% BSA, 0.01% thimerosal and 50% glycerol.
<b>Concentration</b>	Not applicable

<b>Storage Instructions</b>	Store at -20°C. This product is stable for 1 year upon receipt, when handled and stored as instructed.
<b>Purification</b>	Protein A affinity column
<b>Isotype</b>	Mouse IgG1, $\kappa$
<b>Clonality</b>	Monoclonal
<b>Clone ID</b>	12H3C4A6
<b>Note</b>	GenScript can customize this product per customer's request including product size, buffer components, etc.

## Examples

Mouse Anti-Human IgG Fab Antibody (12H3C4A6)[HRP] binds with Human IgGs

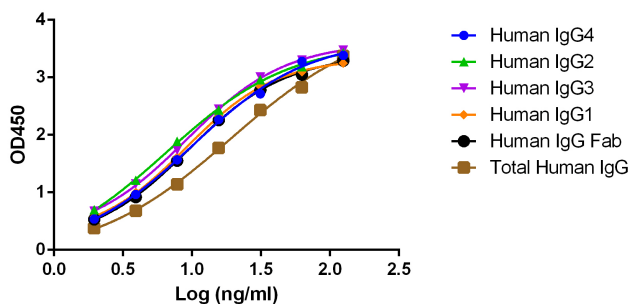


Figure 1. ELISA analysis of Mouse Anti-Human IgG Fab Antibody (12H3C4A6)[HRP], mAb (GenScript, A01855) with various subclasses of human IgG.

The coating antigens are recombinant human IgG1, recombinant human IgG2, recombinant human IgG3, recombinant human IgG4, recombinant human IgG fab fragment and total human IgG. The coating concentration is 1  $\mu$ g/ml.

Mouse Anti-Human IgG Fab Antibody (12H3C4A6)[HRP], mAb (GenScript, A01855) dilution start from 1  $\mu$ g/ml.

Comparison of A01854 and A01855 binding to the Fc region of human IgG

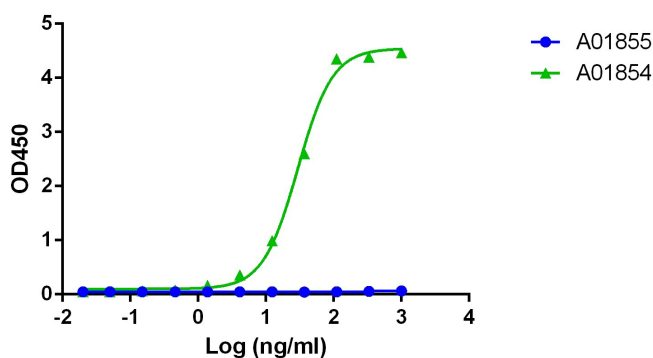


Figure 2. Comparison of Mouse Anti-Human IgG Fc Antibody (50B4A9)[HRP], mAb (GenScript, A01854; Green line), and Mouse Anti-Human IgG Fab Antibody (12H3C4A6)[HRP], mAb (GenScript, A01855; Blue line) binding to the Fc region of human IgG using ELISA.

Coating antigen: ACE-2 Fc Chimera, Human (GenScript, Z03484), 2  $\mu$ g/ml;

Mouse Anti-Human IgG Fc Antibody (50B4A9)[HRP], mAb (GenScript, A01854) and Mouse Anti-Human IgG Fab Antibody (12H3C4A6)[HRP], mAb (GenScript, A01855) dilution start from 2  $\mu$ g/ml.

## Background

**Target Background :** Generally, goat anti-human or donkey anti-human IgG polyclonal antibodies are used as the secondary antibodies to detect human IgG (H+L). However, since polyclonal antibodies can recognize many epitopes, the background and the cross reactivity in assays is usually high, making results hard to interpret. As a mouse monoclonal antibody, the unique GenScript Mouse Anti-Human IgG Fab Antibody (12H3C4A6)[HRP], mAb has a high specificity to the human IgG Fab portion and can be used to detect human antibodies which include the human IgG Fab portion.

**Synonyms :** Anti-Human IgG Fab Monoclonal Secondary Antibody (Min X Ms, Rt, Rb, Ch, Gt)

**For laboratory research use only. Direct human use, including taking orally and injection and clinical use are forbidden.**