

Rev04  
 Update: Mar,01,2022

**DATASHEET**

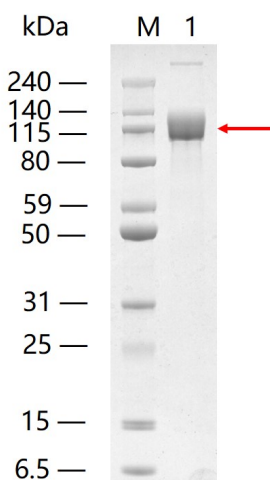
# ACE-2 Fc Chimera, Human (CHO-expressed)

Cat. No.: Z03516

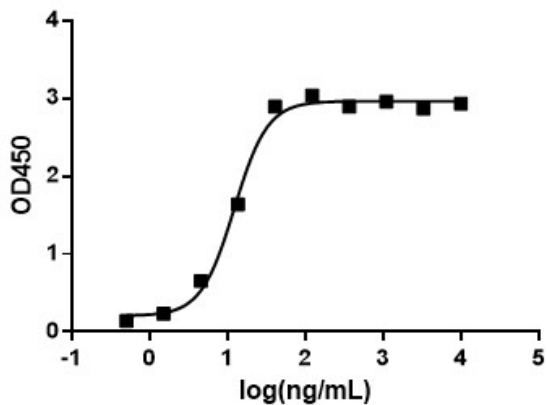
## Product Introduction

<b>Species</b>	Human
<b>Protein Construction</b>	<div style="display: flex; align-items: center; gap: 10px;"> <div style="background-color: #0056b3; color: white; padding: 5px; text-align: center;">           ACE-2 (Gln18-Ser740)            Accession # Q9BYF1         </div> <div style="background-color: #76923c; color: white; padding: 5px; text-align: center;">           hFc         </div> </div> <div style="display: flex; justify-content: space-around; margin-top: 5px; font-size: small;"> <span>N-term</span> <span>C-term</span> </div>
<b>Purity</b>	> 95% as analyzed by SDS-PAGE
<b>Endotoxin Level</b>	< 1 EU/μg of protein by gel clotting method
<b>Biological Activity</b>	ACE-2, hFc, Human (CHO-expressed) can bind with S-RBD in functional ELISA assay.
<b>Expression System</b>	CHO
<b>Theoretical Molecular Weight</b>	110.5 kDa
<b>Formulation</b>	Supplied as a solution in PBS pH 7.4.
<b>Concentration</b>	Please refer to the COA for the specific lot.
<b>Storage &amp; Stability</b>	Upon receiving, this product remains stable for up to 6 months at -20°C or below. Avoid repeated freeze-thaw cycles.

## Examples

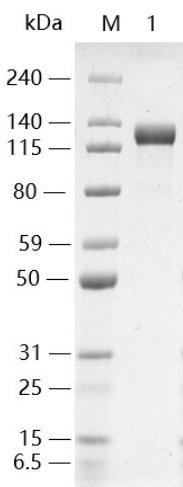

 1: 1 μg of Z03516, reducing (R)  
 > 95 % as determined by SDS-PAGE

### Z03516



Immobilized SARS-CoV-2 Spike protein (RBD, His Tag) (Cat. No. Z03483) at 1  $\mu\text{g}/\text{mL}$  can bind ACE-2 Fc Chimera, Human (Cat. No. Z03516) with a serial dilution.

Mouse Anti-Human IgG Fc Antibody[HRP], mAb (Cat.No. A01854) is used as a secondary antibody (0.1  $\mu\text{g}/\text{mL}$ ).



Lane 1: 1 $\mu\text{g}$  of ACE-2 Fc Chimera, Human (CHO-expressed), reducing(R)

> 95% as analyzed by SDS-PAGE

## Background

**Target Background :** Angiotensin-Converting Enzyme 2 (ACE-2) is an integral membrane protein and a zinc metalloprotease of the ACE family. The ACE family includes somatic and germinal ACE. ACE-2 cleaves angiotensins I and II as a carboxypeptidase. ACE-2 converts angiotensin I to angiotensin 1-9, and angiotensin II to angiotensin 1-7. ACE 2 is also able to hydrolyze apelin-13 and dynorphin-13 with high efficiency. It has high binding affinity to S-RBD.

**Synonyms :** Human Angiotensin-Converting Enzyme 2; ACE-2

**For laboratory research use only. Direct human use, including taking orally and injection and clinical use are forbidden.**