

Human Recombinant PD-L1 Stable Cell Line
Cat. No. M00544**Version 04282015**

I	Introduction	1
II	Background.....	1
III	Representative Data.....	2
IV	Thawing and Subculturing.....	2
V	References	3
	Limited Use License Agreement.....	4

I. INTRODUCTION

Catalog Number: M00544

Cell Line Name: HEK293/PD-L1

Gene Synonyms: CD274 ; B7-H; B7H1; PDCD1L1; PDCD1LG1; PDL1

Expressed Gene: Codon Optimized from NM_014143.3; no expressed tags

Host Cell: HEK293

Quantity: Two vials of frozen cells (1×10^6 per vial)

Stability: 15 passages

Application: Binding assay or use as immunogen

Freeze Medium: 95% complete growth medium, 5% DMSO

Complete Growth Medium: DMEM, 10% FBS

Culture Medium: DMEM, 10% FBS, 400 μ g/ml G418

Mycoplasma Status: Negative

Storage: Liquid nitrogen immediately upon receipt

II. BACKGROUND

Programmed death-ligand 1 (PD-L1) also known as cluster of differentiation 274 (CD274) or B7 homolog 1 (B7-H1) is a protein that in humans is encoded by the CD274 gene. The formation of the PD-1 receptor / PD-L1 or B7.1 receptor /PD-L1 ligand complex transmits an inhibitory signal which reduces the proliferation of these CD8+ T cells at the lymph nodes. PD-1 is also able to control the accumulation of foreign antigen specific T cells in the lymph nodes through apoptosis, which is further mediated by a lower regulation of the gene Bcl-2.

§: GenScript employs a PCR-based method to test the mycoplasma. The test covers 11 of the most common strains of mycoplasma, (covering approximately 95% of *M. fermentans*, *M. hyorhinitis*, *M. arginini*, *M. orale*, *M. salivarium*, *M. hominis*, *M. pulmonis*, *M. arthritidis*, *M. neurolyticum*, *M. hyopneumoniae* and *M. capricolum*) and one species *Ureaplasma (U. urealyticum)*, with sufficient sensitivity and specificity.

III. REPRESENTATIVE DATA

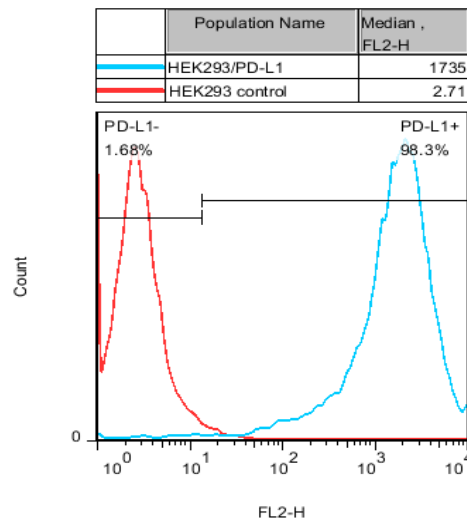


Figure 1. FACS analysis of PD-L1 expression in HEK293/PD-L1 cells.

IV. THAWING AND SUBCULTURING

Thawing Protocol

1. Remove the vial from liquid nitrogen tank and thaw cells quickly in a 37°C water-bath.
2. Just before the cells are completely thawed, decontaminate the outside of the vial with 70% ethanol and transfer the cells to a 15 ml centrifuge tube containing 9 ml of complete growth medium.
3. Pellet cells by centrifugation at 200 x g for 5 min, and remove the medium.
4. Resuspend the cells in complete growth medium.
5. Transfer the cell suspension to a 10 cm dish with 10 ml of complete growth medium.
6. Grow the cells in incubator with 37°C, 5 %CO₂.
7. Add antibiotic the following day.

Sub-culturing Protocol

1. Remove the culture medium from cells.
2. Wash cells with PBS (pH 7.4) to remove all traces of serum that contains trypsin inhibitor.
3. Add 2.0 ml of 0.05% (w/v) Trypsin- EDTA (GIBCO, Cat No. 25300) solution into 10 cm dish and observe the cells under an inverted microscope until cell layer is dispersed (usually within 3 to 5 minutes).
 Note: To avoid cells clumping, do not agitate the cells by hitting or shaking the dish while waiting for the cells detach. If cells are difficult to detach, please place the dish in 37°C incubator for ~2 min.
4. Add 6.0 to 8.0 ml of complete growth medium into dish and aspirate cells by gently pipetting.

5. Centrifuge the cells at 200 x g for 5min, and remove the medium.
6. Resuspend the cells in culture medium and add the cells suspension to new culture dish.
7. Grow the cells in incubator with 37°C, 5 %CO₂.

Subcultivation Ratio: 1:3 to 1:8 weekly.

Medium Renewal: Every 2 to 3 days

* GenScript uses a PCR-based method to test the mycoplasma. Our PCR mycoplasma test covers 11 of the most common species of mycoplasma (*M. fermentans*, *M. hyorhinitis*, *M. arginini*, *M. orale*, *M. salivarium*, *M. hominis*, *M. pulmonis*, *M. arthritis*, *M. neurolyticum*, *M. hyopneumoniae*, *M. capricolum*) and one species of *Ureaplasma* (*U. urealyticum*), with sufficient sensitivity and specificity.

V. REFERENCES

1. Mahoney KM1, Rennert PD2, Freeman GJ3. Combination cancer immunotherapy and new immunomodulatory targets. *Nat Rev Drug Discov.* 2015 Jul 31;14(8):561-84.
2. Butte MJ, Peña-Cruz V, Kim MJ, Freeman GJ, Sharpe AH (August 2008). "Interaction of human PD-L1 and B7-1". *Mol Immunol.* 45 (13): 3567–72.

GenScript USA Inc,

860 Centennial Ave.

Piscataway, NJ 08854

Toll-Free: 1-877-436-7274

Tel: 1-732-885-9188, Fax: 1-732-210-0262

Email: product@genscript.com

Web: <http://www.genscript.com>

For Research Use Only.

Limited Use License Agreement

This is a legal agreement between you (Licensee) and GenScript USA Inc. governing use of GenScript's stable cell line products and protocols provided to licensee. By purchasing and using the stable cell line, the buyer agrees to comply with the following terms and conditions of this label license and recognizes and agrees to such restrictions:

- 1) The products are not transferable and will be used at the site where they were purchased. Transfer to another site owned by buyer will be permitted only upon written request by buyer followed by subsequent written approval by GenScript.
- 2) The purchaser cannot sell or otherwise transfer (a) this product (b) its components or (c) materials made using this product or its components to a third party.
- 3) The products sold by GenScript are for laboratory and animal research purposes only. The products are not to be used on humans, for consumption, or for any unlawful uses.

GenScript USA Inc. will not assert against the buyer a claim of infringement of patents owned or controlled by GenScript USA Inc. and claiming this product based upon the manufacture, use or sale of a clinical diagnostic, therapeutic and vaccine, or prophylactic product developed in research by the buyer in which this product or its components has been employed, provided that neither this product nor any of its components was used in the manufacture of such product. For information on the use of this product for other purposes, contact Marketing Department, GenScript USA Inc., 120 Centennial Avenue, Piscataway, New Jersey 08840, U.S.A. Phone: 1-732-885-9188. Fax: 1-732-210-0262. Email: marketing@genscript.com.