


Rev03  
 Update: Aug,08,2025

**DATASHEET**

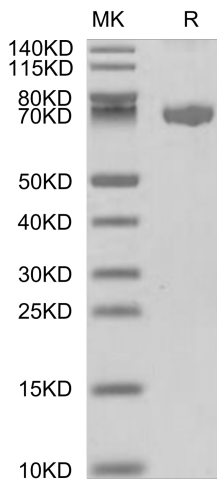
# CLEC2D hFc Chimera[Biotin], Avi, Human

Cat. No.: Z04434

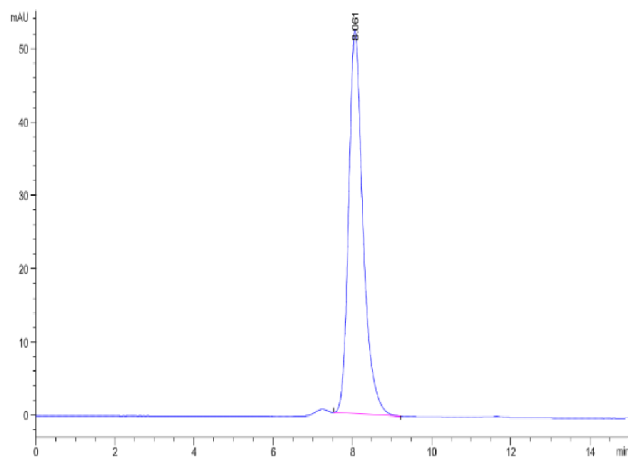
## Product Introduction

<b>Species</b>	Human
<b>Protein Construction</b>	 <p>Avi hFc CLEC2D (Arg60-Val191)      Accession # Q9UHP7-1</p> <p>N-term C-term</p>
<b>Conjugate</b>	Biotin
<b>Purity</b>	> 95% as determined by BisTris PAGE > 95% as determined by HPLC
<b>Endotoxin Level</b>	Less than 1EU per µg by the LAL method.
<b>Expression System</b>	HEK293
<b>Theoretical Molecular Weight</b>	59.1 kDa
<b>Apparent Molecular Weight</b>	Due to glycosylation, the protein migrates to 68-75 kDa based on Bis-Tris PAGE result.
<b>Formulation</b>	Lyophilized from 0.22µm filtered solution in PBS (pH 7.4).
<b>Reconstitution</b>	Centrifuge the tube before opening. Reconstituting to a concentration more than 100 µg/ml is recommended. Dissolve the lyophilized protein in distilled water.
<b>Storage &amp; Stability</b>	Upon receiving, the product remains stable up to 6 months at -20 °C or below. Upon reconstitution, the product should be stable for 3 months at -80 °C. Avoid repeated freeze-thaw cycles.

## Examples



CLEC2D hFc Chimera[Biotin], Avi, Human on Bis-Tris PAGE under reduced condition. The purity is greater than 95%.



The purity of CLEC2D hFc Chimera[Biotin], Avi, Human is greater than 95% as determined by SEC-HPLC.

## Background

**Target Background :** C-type lectin domain family 2, member D (CLEC2D) is implicated in the immune response. Pre-eclampsia and HIV infection have opposing immune responses. The contrasting expression of CLEC2D in HIV infection and pre-eclampsia is demonstrative of the immunosuppressive and pro-inflammatory roles of the respective pathologies.

**Synonyms :** LLT-1; CLAX; LLT1; OCIL; CLEC2D; CLAXLLT-1; OCILmember D

**For research use only. Not intended for human or animal clinical trials, therapeutic or diagnostic use.**

Manufacturer: Nanjing GenScript Biotech Co., Ltd. No. 28Yongxi Road, Jiangning District, Nanjing, Jiangsu, China