

Rev03  
 Update: Aug,08,2025

**DATASHEET**

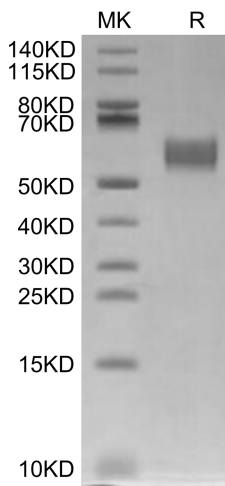
# SIRP Beta/CD172b[Biotin], His & Avi, Human

Cat. No.: Z04611

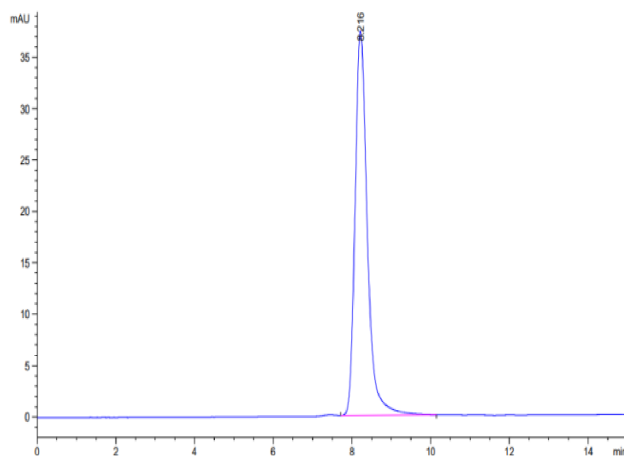
## Product Introduction

<b>Species</b>	Human
<b>Protein Construction</b>	<div style="display: flex; align-items: center; justify-content: center;"> <div style="background-color: #0056b3; color: white; padding: 5px; text-align: center;"> <b>SIRP Beta/CD172b (Glu30-Ala369)</b>  <b>Accession # O00241-1</b> </div> <div style="background-color: #92d050; color: white; padding: 5px; text-align: center; margin: 0 5px;"> <b>His</b> </div> <div style="background-color: #6aa84f; color: white; padding: 5px; text-align: center; margin: 0 5px;"> <b>Avi</b> </div> </div> <p style="text-align: center; margin-top: 5px;"> <span style="margin-right: 100px;">N-term</span> <span>C-term</span> </p>
<b>Conjugate</b>	Biotin
<b>Purity</b>	> 95% as determined by BisTris PAGE > 95% as determined by HPLC
<b>Endotoxin Level</b>	Less than 1EU per µg by the LAL method.
<b>Expression System</b>	HEK293
<b>Theoretical Molecular Weight</b>	40 kDa
<b>Apparent Molecular Weight</b>	Due to glycosylation, the protein migrates to 55-65 kDa based on Bis-Tris PAGE result.
<b>Formulation</b>	Lyophilized from 0.22µm filtered solution in PBS (pH 7.4).
<b>Reconstitution</b>	Centrifuge the tube before opening. Reconstituting to a concentration more than 100 µg/ml is recommended. Dissolve the lyophilized protein in distilled water.
<b>Storage &amp; Stability</b>	Upon receiving, the product remains stable up to 6 months at -20 °C or below. Upon reconstitution, the product should be stable for 3 months at -80 °C. Avoid repeated freeze-thaw cycles.

## Examples



SIRP Beta/CD172b[Biotin], His & Avi, Human on Bis-Tris PAGE under reduced condition. The purity is greater than 95%.



The purity of SIRP Beta/CD172b[Biotin], His & Avi, Human is greater than 95% as determined by SEC-HPLC.

## Background

**Target Background :** SIRP beta 1 is a type I transmembrane protein belonging to the SIRP family within the Ig superfamily. Members of this family are characterized by an extracellular region containing a V-set Ig domain containing a J-like sequence and two C1-set Ig domains. SIRP beta 1 is immunoglobulin-like cell surface receptor involved in the negative regulation of receptor tyrosine kinase-coupled signaling processes. Participates also in the recruitment of tyrosine kinase SYK. Triggers activation of myeloid cells when associated with TYROBP.

**Synonyms :** SIRP-beta-1 isoform 3; SIRPB1; CD172b; DKFZp686A05192; FLJ26614; 9930027N05Rik; SIRP-beta; Sirpb; Sirpb1; Sirpb1a; SIRP- $\beta$ -1 isoform 3; SIRP- $\beta$

**For research use only. Not intended for human or animal clinical trials, therapeutic or diagnostic use.**

Manufacturer: Nanjing GenScript Biotech Co., Ltd. No. 28Yongxi Road, Jiangning District, Nanjing, Jiangsu, China