

Rev03
 Update: Aug,08,2025

DATASHEET

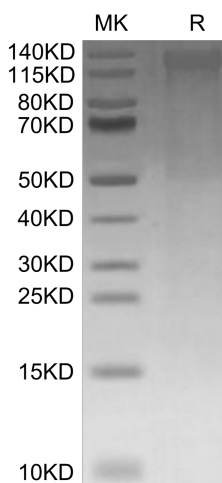
TEM1/cd248, His, Canine

Cat. No.: Z04719

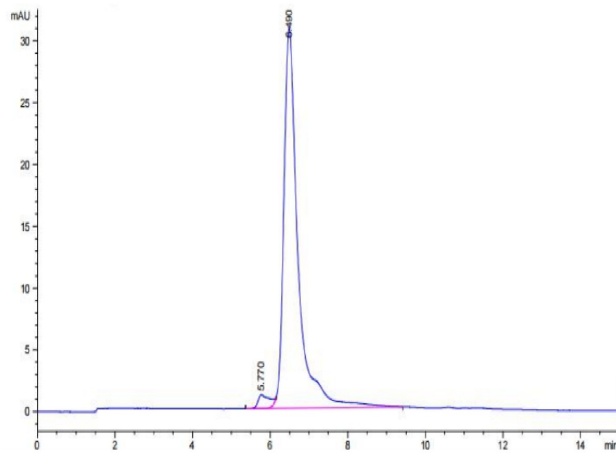
Product Introduction

Species	Canine
Protein Construction	<div style="display: flex; align-items: center; justify-content: center;"> <div style="background-color: #0056b3; color: white; padding: 5px; margin-right: 10px;"> TEM1/cd248 (Gln18-Gly687) Accession # XP_025302002.1 </div> <div style="background-color: #76923c; color: white; padding: 5px; margin-left: 10px;">His</div> </div> <div style="display: flex; justify-content: space-around; font-size: small; margin-top: 5px;"> N-term C-term </div>
Purity	> 95% as determined by BisTris PAGE > 95% as determined by HPLC
Endotoxin Level	Less than 1EU per µg by the LAL method.
Expression System	HEK293
Theoretical Molecular Weight	72.72 kDa
Apparent Molecular Weight	Due to glycosylation, the protein migrates to 120-140 kDa based on Bis-Tris PAGE result.
Formulation	Lyophilized from 0.22µm filtered solution in PBS (pH 7.4).
Reconstitution	Centrifuge the tube before opening. Reconstituting to a concentration more than 100 µg/ml is recommended. Dissolve the lyophilized protein in distilled water.
Storage & Stability	Upon receiving, the product remains stable up to 6 months at -20 °C or below. Upon reconstitution, the product should be stable for 3 months at -80 °C. Avoid repeated freeze-thaw cycles.

Examples



TEM1/cd248, His, Canine on Bis-Tris PAGE under reduced condition. The purity is greater than 95%.



The purity of TEM1/cd248, His, Canine is greater than 95% as determined by SEC-HPLC.

Background

Target Background : Colorectal cancer (CRC) is one of the most common cancers worldwide usually diagnosed in the advanced stage. The serum concentration of tumor endothelial marker 1 (TEM1) was measured and correlated with clinicopathological features to evaluate whether TEM1 might serve as a biomarker for early CRC diagnosis, progression, and prognosis. TEM1 can act as a potential diagnostic, progression, and prognostic serum biomarker for patients with CRC; TEM1 might be a good supplement for commonly used markers CEA and Ca 19-9.

Synonyms : Endosialin; CD248; CD164L1; TEM1; CD164 sialomucin-like 1; CD164L1; CD248 molecule

For research use only. Not intended for human or animal clinical trials, therapeutic or diagnostic use.

Manufacturer: Nanjing GenScript Biotech Co., Ltd. No. 28Yongxi Road, Jiangning District, Nanjing, Jiangsu, China