

Rev03  
 Update: Aug,08,2025

**DATASHEET**

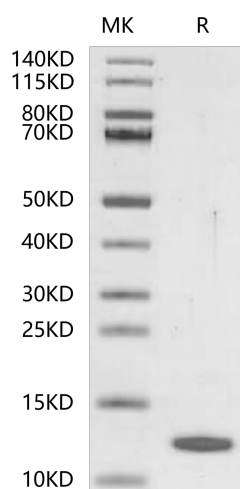
# BLOC1S2, Human

Cat. No.: Z05082

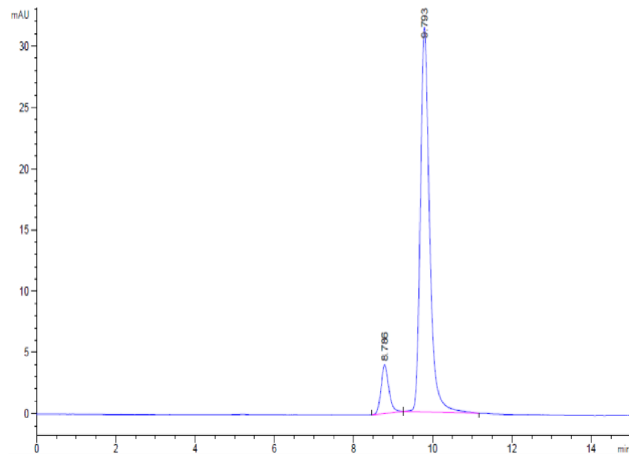
## Product Introduction

<b>Species</b>	Human
<b>Protein Construction</b>	<b>BLOC1S2 (Phe2-Arg99)</b> Accession # Q6QNY1-2
<b>Purity</b>	> 95% as determined by BisTris PAGE > 90% as determined by HPLC
<b>Endotoxin Level</b>	Less than 1EU per µg by the LAL method.
<b>Expression System</b>	E.coli
<b>Theoretical Molecular Weight</b>	11.35 kDa
<b>Apparent Molecular Weight</b>	The protein has a predicted MW of 11.35 kDa same as Bis-Tris PAGE result.
<b>Formulation</b>	Lyophilized from 0.22µm filtered solution in PBS, 150mM NaCl (pH 7.4).
<b>Reconstitution</b>	Centrifuge the tube before opening. Reconstituting to a concentration more than 100 µg/ml is recommended. Dissolve the lyophilized protein in distilled water.
<b>Storage &amp; Stability</b>	Upon receiving, the product remains stable up to 6 months at -20 °C or below. Upon reconstitution, the product should be stable for 3 months at -80 °C. Avoid repeated freeze-thaw cycles.

## Examples



BLOC1S2, Human on Bis-Tris PAGE under reduced condition.  
 The purity is greater than 95%.



The purity of BLOC1S2, Human is greater than 90% as determined by SEC-HPLC.

## Background

**Target Background :** BLOC1S2 (Biogenesis of lysosome-related organelles complex-1 subunit 2) protein is widely expressed in normal tissue as well as in malignant tumors with a tendency towards lower expression levels in certain subtypes of tumors. On the subcellular level, BLOC1S2 is expressed in an organellar-like pattern and co-localizes with mitochondria.

**Synonyms :** BLOC-1 subunit 2; BLOS2; CEAP; CEAP11

**For research use only. Not intended for human or animal clinical trials, therapeutic or diagnostic use.**

Manufacturer: Nanjing GenScript Biotech Co., Ltd. No. 28Yongxi Road, Jiangning District, Nanjing, Jiangsu, China