

Rev03  
 Update: Aug,08,2025

**DATASHEET**

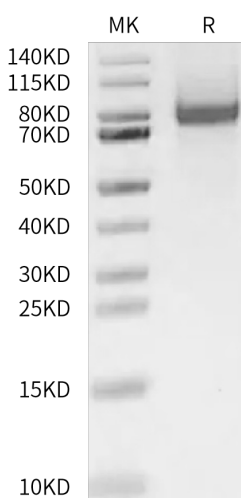
# CXCL16 hFc Chimera, Human

Cat. No.: Z05205

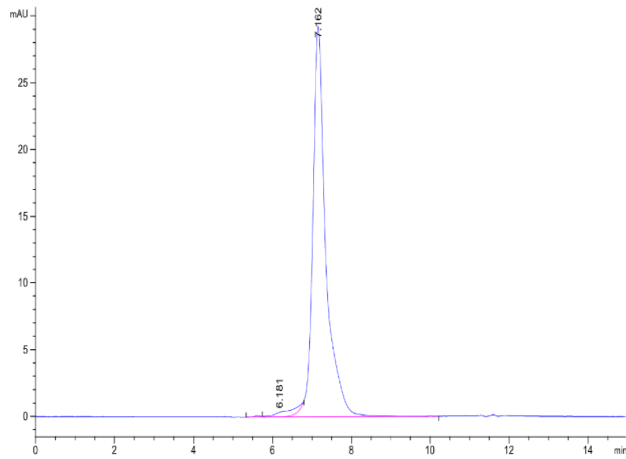
## Product Introduction

<b>Species</b>	Human
<b>Protein Construction</b>	<div style="display: flex; justify-content: space-around; align-items: center;"> <div style="background-color: #0056b3; color: white; padding: 5px; text-align: center;"> <b>CXCL16 (Asn30-Thr205)</b>            Accession # Q9H2A7         </div> <div style="background-color: #76923c; color: white; padding: 5px; text-align: center;"> <b>hFc</b> </div> </div> <div style="display: flex; justify-content: space-around; font-size: small; margin-top: 5px;"> <span>N-term</span> <span>C-term</span> </div>
<b>Purity</b>	> 95% as determined by BisTris PAGE > 95% as determined by HPLC
<b>Endotoxin Level</b>	Less than 1EU per µg by the LAL method.
<b>Expression System</b>	HEK293
<b>Theoretical Molecular Weight</b>	45.9 kDa
<b>Apparent Molecular Weight</b>	Due to glycosylation, the protein migrates to 70-90 kDa based on Bis-Tris PAGE result.
<b>Formulation</b>	Lyophilized from 0.22µm filtered solution in PBS (pH 7.4).
<b>Reconstitution</b>	Centrifuge the tube before opening. Reconstituting to a concentration more than 100 µg/ml is recommended. Dissolve the lyophilized protein in distilled water.
<b>Storage &amp; Stability</b>	Upon receiving, the product remains stable up to 6 months at -20 °C or below. Upon reconstitution, the product should be stable for 3 months at -80 °C. Avoid repeated freeze-thaw cycles.

## Examples



CXCL16 hFc Chimera, Human on Bis-Tris PAGE under reduced condition. The purity is greater than 95%.



The purity of HCXCL16 hFc Chimera, Human is greater than 90% as determined by SEC-HPLC.

## Background

**Target Background :** CXC chemokine ligand 16 (CXCL16) is a CXC soluble chemokine, an adhesion molecule and a cell surface scavenger receptor. CXCL16 regulates inflammation, tissue injury and fibrosis. Parenchymal renal cells, vascular wall cells, leukocytes and platelets express and/or release CXCL16 under the regulation of inflammatory mediators. CXCL16 expression is increased in experimental and human nephropathies. Targeting CXCL16 protected from experimental glomerular injury or interstitial fibrosis.

**Synonyms :** SR-PSOX; CXCLG16; SRPSOX; CXCL16; SCYB16

**For research use only. Not intended for human or animal clinical trials, therapeutic or diagnostic use.**

Manufacturer: Nanjing GenScript Biotech Co., Ltd. No. 28Yongxi Road, Jiangning District, Nanjing, Jiangsu, China