

Rev03
 Update: Aug,08,2025

DATASHEET

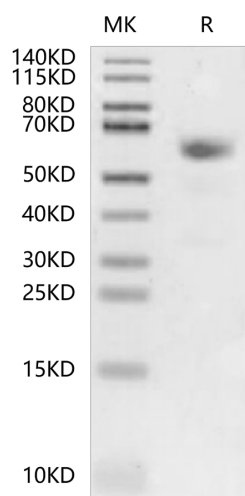
NKp80/CLEC5C hFc Chimera, Human

Cat. No.: Z05697

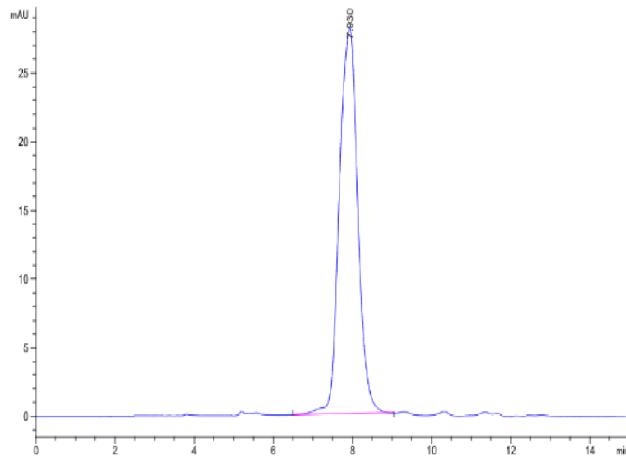
Product Introduction

Species	Human
Protein Construction	<div style="display: flex; align-items: center; justify-content: center;"> <div style="background-color: #4a7c9c; color: white; padding: 5px; margin-right: 10px;">hFc</div> <div style="background-color: #0056b3; color: white; padding: 5px; border: 1px solid white;"> NKp80/CLEC5C (Leu60-Tyr231)_x000D_ Accession # Q9NZS2-1 </div> </div> <div style="display: flex; justify-content: space-between; font-size: small; margin-top: 5px;"> N-term C-term </div>
Purity	> 95% as determined by BisTris PAGE > 90% as determined by HPLC
Endotoxin Level	Less than 1EU per µg by the LAL method.
Expression System	HEK293
Theoretical Molecular Weight	45.37 kDa
Apparent Molecular Weight	Due to glycosylation, the protein migrates to 55-65 kDa based on Bis-Tris PAGE result.
Formulation	Lyophilized from 0.22 µm filtered solution in PBS (pH 7.4).
Reconstitution	Centrifuge the tube before opening. Reconstituting to a concentration more than 100 µg/ml is recommended. Dissolve the lyophilized protein in distilled water.
Storage & Stability	Upon receiving, the product remains stable up to 6 months at -20 °C or below. Upon reconstitution, the product should be stable for 3 months at -80 °C. Avoid repeated freeze-thaw cycles.

Examples



NKp80/CLEC5C hFc Chimera, Human on Bis-Tris PAGE under reduced condition. The purity is greater than 95%.



The purity of NKp80/CLEC5C hFc Chimera, Human is greater than 90% as determined by SEC-HPLC.

Background

Target Background : NKp80, an activating homodimeric C-type lectin-like receptor (CLR), is expressed on essentially all human natural killer (NK) cells and stimulates their cytotoxicity and cytokine release.

Synonyms : Lectin-like receptor F1; KLRF1; CLEC5C; ML; NKp80

For research use only. Not intended for human or animal clinical trials, therapeutic or diagnostic use.

Manufacturer: Nanjing GenScript Biotech Co., Ltd. No. 28Yongxi Road, Jiangning District, Nanjing, Jiangsu, China